

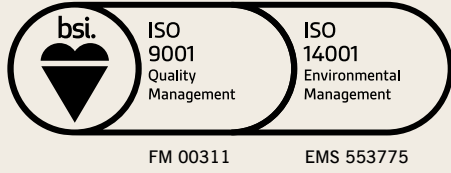
World Leaders in what we do...

For more than 90 years, Viking Johnson has been a leading brand of Crane Building Services & Utilities and is a world leader in the manufacture and supply of couplings, flange adaptors, pipe repair solutions for the international water, wastewater, gas and industrial markets. Products are suitable for dedicated and wide tolerance applications ranging from tolerance applications ranging from DN40 to DN4000 in diameter and can be used to connect or repair many types of pipe material.



Quality

Viking Johnson delivers pipe fittings and flow control products that continuously exceed market expectations. Utilising the latest engineering design software, our design team ensure repeatability and longevity for a full range of pipe fittings including couplings, flange adaptors, flow control valves and more. We operate a quality management system accredited to ISO 9001



combined with an environmental policy accredited to ISO 14001. Some product ranges have been approved by 3rd party organisations, for marine- Lloyds Register, Bureau Veritas and ABS; for potable water- WBS, NSF, ACS and Belgaqua; for specific regions- GOST-R Bulgarkontrola, Belarus Technical Approval and many others, giving customers complete peace of mind.

Good People Make Good Things Happen

People are at the heart of our business. Our collaborative culture values human ingenuity and creativity, which allows our employees to develop personally and achieve professional career goals.

At Viking Johnson, new ideas are welcome along with equal doses of trust, respect and empowerment. A testament to this is our industry leading 'New Product Development Programme' that has consistently delivered world class innovative products.



We Operate Around the World



Our Heritage

Viking Johnson's roots date back to the 1930's when Johnson couplings were made by the Victaulic Company Ltd, part of the Stewarts & Lloyd steel group. The package of S&L steel pipe and Johnson couplings was very successful and installed on many pipeline projects worldwide.

1967 saw nationalisation of the major steel companies, including S&L, and Viking Johnson became part of British Steel Corporation's Tubes Division. This Company continued until 1983 when, under Margaret

Thatcher's conservative government, the non-steel making parts of BSC were privatised and Victaulic plc was formed through an employee buy-out. In 2003, Viking Johnson was one of several businesses bought by Crane Ltd.

Crane Building Services & Utilities forms part of the Process Flow Technologies segment within Crane Co., which was founded in 1855, and is now a multi-industry manufacturer, a quoted company on the New York Stock Exchange with a market capitalisation in excess of \$7.4 billion (April 2024).

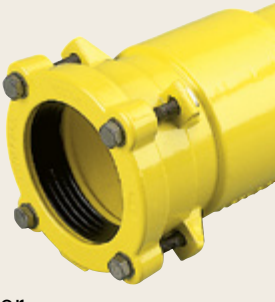
Sister Brands — for the Water Industry



Posiflex offers a range of elastomeric expansion joints which provide stress relief for piping systems, caused by thermal and mechanical vibration and/or movement. They are designed to accommodate the needs of individual pipe systems conveying materials as diverse as fluids, foodstuffs, chemical and crude oil.



WASK is a market leader in the supply of pipe fittings and equipment for the global water & gas markets. AquaStop and the Hydrant Wizard are designed to repair pipework and replace defective fire hydrants without interruption of flow in the mains.



Manufacturing Excellence

Viking Johnson products have a design life expectancy of 50 years and form a crucial part of treatment, distribution and waste networks. To ensure the future integrity of a pipeline, it is vitally important that products are structurally sound and dimensionally stable. Most Viking Johnson products are manufactured in the UK, on a 14 acre manufacturing facility in Hitchin, by a skilled and experienced workforce. To produce a comprehensive range of over 7,000 product lines, from raw materials through fabrication, coating and finishing, every manufacturing step is carefully considered.



Mini Product Overview



PIONEERS IN PIPE SOLUTIONS

CRANE BUILDING SERVICES & UTILITIES



46-48 WILBURY WAY
HITCHIN, HERTFORDSHIRE
SG4 0UD. UNITED KINGDOM
TELEPHONE: +44 (0)1462 443322
FAX: +44 (0)1462 443311
EMAIL: info@vikingjohnson.com

www.vikingjohnson.com

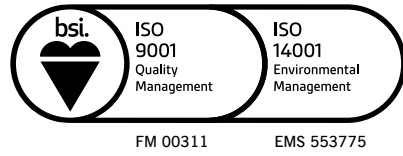
DUBAI SALES OFFICE
CRANE BS&U
BUILDING 4, OFFICE 901
THE GALLERIES
PO BOX 17415
DOWNTOWN JEBEL ALI
DUBAI. UAE

TELEPHONE: +971 4816 5800



To visit our Video Library go to:
<http://www.youtube.com/user/CraneBSU>

Printed in the UK



- Designed and manufactured under quality management systems in accordance with BS EN ISO 9001.
- Environmental Management System accredited to ISO 14001.
- For full terms and conditions, please visit our website.
- We hope our communications have an impact on you - but not the environment - we have taken steps to ensure this brochure is printed on Forestry Stewardship Council material and the paper is made by totally chlorine free process.

CRANE BUILDING SERVICES & UTILITIES

www.cranebsu.com

Flange Comparison Chart

Nominal Size	Table	Diameter	P.C. Dia.	Hole Dia.	Bolt Dia.	No. Bolts
	mm	inch	mm	inch	mm	inch
DN80/3"	PN10/16	200	19	160	16	8
	BS10 ADE	184	7.25	146	5.75	17
	ANSI 125/150	150	7.5	152	6	19
	PN10/16	220	8.67	180	7.1	18
DN100/4"	BS10 AD	216	8.5	178	7	17
	BS10 E	216	8.5	178	7	17
	ANSI 125/150	228	9	191	7.5	19
	PN10/16	285	11.2	240	9.45	22
DN150/6"	BS10 A	279	11	235	9.25	17
	BS10 D	279	11	235	9.25	17
	BS10 E	279	11	235	9.25	22
	ANSI 125/150	279	11	241	9.5	19
DN200/8"	PN10	340	13.4	295	11.6	22
	PN16	340	13.4	295	11.6	22
	BS10 AD	337	13.25	292	11.5	17
	BS10 E	337	13.25	292	11.5	22
DN250/10"	ANSI 125/150	343	13.5	298	11.75	22
	PN10	395	15.55	350	13.78	22
	PN16	405	15.95	355	14	26
	BS10 AD	406	16	356	14	22
DN300/12"	BS10 E	406	16	356	14	22
	ANSI 125/150	406	16	362	14.25	25
	PN10	445	17.5	400	15.75	22
	PN16	460	18.2	410	16.15	26
DN350/14"	BS10 A	457	18	406	16	22
	BS10 D	457	18	406	16	22
	BS10 E	457	18	406	16	25
	ANSI 125/150	463	18.2	412	16.1	26
DN400/16"	PN10	595	23.4	540	21.25	29
	PN16	615	24.21	555	22.24	26
	BS10 A	640	25.2	585	23.03	30
	BS10 AD	641	25.25	584	23	25
DN450/18"	BS10 E	641	25.25	584	23	25
	ANSI 125/150	635	25	578	22.75	32
	PN10	670	26.38	620	24.41	26
	PN16	670	26.38	620	24.41	26
DN500/20"	BS10 A	715	28.15	650	25.59	33
	BS10 D	705	27.75	642	25.25	32
	BS10 E	705	27.75	642	25.25	32
	ANSI 125/150	698	27.5	635	25	32
DN600/24"	PN10	780	30.71	725	28.54	30
	PN16	820	32.5	756	29.75	29
	BS10 A	826	32.5	756	29.75	29
	BS10 D	826	32.5	756	29.75	29
DN650/26"	BS10 E	826	32.5	756	29.75	29
	ANSI 125/150	813	32	749	29.5	35
	PN10	813	32	749	29.5	35
	PN16	813	32	749	29.5	35

Mini Product Overview

NEW SIZES ADDED

AquaShield®

Couplings & Flange Adaptors

Universal Fittings For Barrier Pipes

DN90 | DN125 | DN180

EXTENDED RANGE

UltraGrip®

AMPLIFIED

Wide tolerance restrained fittings

UltraGrip Coupling

UltraGrip Reducing Coupling

UltraGrip Flange Adaptor

50 YEARS

Design Life Expectancy

Installation Life Expectancy

DN700 | DN800 | DN900

Key

Applications

Water Products

Gas Products

Industrial Products

Applications including:
Oil based & petroleum products
Chemicals
Sewage
General industrial processing

Pipe Materials *

Cast Iron

Stainless Steel

PE

GRP

Clay

Asbestos Cement

Ductile Iron

Steel

PVC

HEP30

ABS

Concrete

PE Barrier Pipe

Lead

Copper

* Check website or technical directory for full details of product/pipe material options

Dedicated

The range comprises couplings, stepped couplings, flange adaptors and dismantling joints for all sizes and working pressures. Ideal for new lay pipe schemes, dedicated products, in sizes up to DN4000, offer a cost effective solution for connecting plain ended pipes or to flanged equipment.

Dismantling Joints

> Double flanged fittings

> Accommodate up to 100mm longitudinal adjustment

> Bespoke joints can be made on request

> DN40 (1½") to DN2400 (96")

FlexLock

> Self-anchoring couplings & flange adaptors

> For ductile iron or steel pipes

> Fully end load bearing

> DN50 (2") to DN300 (12")

Large Diameter

> Standard range or custom made

> For use with new lay pipes and repair and maintenance

> DN350 (14") to DN4000 (160")

QuickFit

> For connecting plain ended pipes with similar outside diameters

> Pre-assembled with close tolerance

> DN40 (2") to DN300 (12")

Marine Couplings & Flange Adaptors

> Pre-assembled up to DN300

> Optional locating plug prevents coupling creep

> DN50 (2") to DN700 (28")

Wall Couplings

> Through wall connections

> Several end configurations available

> DN80 (3") and greater

PE & Barrier Pipe Solutions

A range of mechanical couplings and flange adaptors for all weather and site conditions providing a quick, easy way of joining or repairing PE pipe materials.

They offer full end restraint, removing the need for expensive thrust blocks. Specialist products are also available as end termination systems for pipelines rehabilitated with thin walled PE pipe.

AquaGrip

> PE pipe jointing

> Fully end load bearing

> 63mm to 1600mm

UltraGrip

> PE & PVC pipe connections & transitions

> Grips & seals on a variety of pipe materials

> Range of couplings and adaptors or UltraGrip Pecatadaptor

> DN40 (1½") to DN900 (24")

AquaFast

> For PE & PVC pipe connections

> Easy and simple to install

> Fully end load bearing

> Ideal for pumped sewerage pipelines - support liner not required

> 63mm to 315mm

AquaShield

> Non-permeable universal fitting,

> Connects to all major barrier pipe brands including Protecta-Line, Puriton, SLA and PE 100

> Rated 16bar

> DN90, DN125, DN180

Wide Tolerance

A range of couplings, reducing couplings and flange adaptors designed to accommodate plain ended pipe with differing outside diameters. One size covers a number of different pipe materials, making them ideal for repair and maintenance work reducing the need for a large stock holding.

Wide tolerance products include both flexible fittings, that allow for expansion, contraction and movement, and fully restrained versions, that remove the need for expensive thrust blocks to accommodate forces due to internal pressure in the pipes.

MaxiFit

> Accommodates plain ended pipes with different outside diameters

> Up to 34mm tolerance on the pipe OD

> Couplings, flange adaptors, large diameter, end caps, stepped couplings

> DN40 (1½") to DN700 (28")

MegaFit

> To connect plain ended pipes of the same nominal bore

> OD tolerance range of up to 34mm

> DN50 (2") to DN300 (12")

UltraGrip

> Wide tolerance & full end restraint

> Couplings, flange adaptors, reducing couplings, pecatadaptors & end caps

> Grips & seals on a variety of pipe materials

> Reversible bolts for quick and easy installation

> Supplied with hygienic protective caps

> DN32 (1¼") to DN900 (32")

Pipe Repairs

A range of repair clamps and under pressure tapping products, available in both ductile iron and stainless steel.

These products feature wide tolerances for repair and branch connections for pipes manufactured from a variety of materials. The range can be installed under pressure, removing the requirement for costly mains shut downs.

EasiRange

> Solution for pipe repair & tapping at full operational pressures

> Remote installation options available

> EasiClamp, EasiTap, EasiTee, EasiCollar

> DN50 (2") to DN1200 (48")

HandiRange

> Stainless steel repair & tapping solutions

> HandiClamp, HandiTap, HandiTee, HandiBand

> Permanent repair on various pipe materials

> DN15 (½") to DN750 (28")

MaxiFit

> Accommodates plain ended pipes with different ODs

> Ideal where a section of pipes has to be cut out & replaced

> Pre-assembled & wide tolerance

> DN40 (1½") to DN700 (28")

UltraGrip

> Offers easy transition from one pipe material to another

> Contains an end load restraint mechanism

> Grips & seals on even the most corroded pipes

> DN32 (1¼") to DN900 (16")

A real time saver for PE connections.

Install in just 20 minutes!

SIZES AVAILABLE 355 TO 450 DIAMETER

20 MINS

AquaFast Large Diameter

> Easy installation for PE Connections

> One size fits multiple SDR's

> Reduce inventory by up to 75%

> 355mm - 450mm Diameter

Standard Outside Diameter

NOMINAL BORE	MM	INCHES	15	20	25	32	40	50	65	80	90	100	125	150	175	200	225	250	300	350	375	400	450	500	525	550	600	650	675	700	750	800	825	850	900	1000	1050	1100	1200	1300	1400	1600	1800	2000	
IMPERIAL CAST IRON & ASBESTOS CEMENT (TURNED END)	CLASS AB ONLY						55.9	69.1	82.3	95.5	121.9	149.9	177.3	204.7	232.2	259.1	286.0	338.8	387.0	413.0	439.0	482.0	545.0	572.0	598.0	650.0	703.0	729.0	755.0	807.0	870.0	886.0	912.0	964.0	1068.0	1121.0	1172.0	1277.0							
	CLASS CD ONLY						55.9	69.1	82.3	95.5	121.9	149.9	177.3	204.7	232.2	259.1	286.0	345.8	399.3	426.2	453.1	506.9	560.3	587.2	613.7	667.0	720.3	746.8	773.2	826.0	879.3	905.8	984.5	1090.2	1143.0										
	NON STD						57.0	72.5	82.5																																				
	SER 1	21.3	26.9	33.7	42.4	48.3	60.3	76.1	88.9		114.3	139.7	168.3			219.1		273.0	323.9	355.6		406.4	457.0	508.0			610.0			711.0		813.0		914.0	1016.0	1067.0	1118.0	1219.0		1422.0	1626.0	1829.0	2032.0		
	SER 2		25.0	32.0	40.0	47.0	63.5	70.0		101.6	127.0	133.0																																	
	SER 3	25.4	30.0	44.5	54.0		73.0	82.5			108.0	141.3	159.0	193.7		244.5											559.0		660.0							1168.0				1321.0					
	SER 3		35.0								152.4	177.8																																	
STEEL ISO/4200 (1991)	BS1387 (1990)	21.3	26.9	33.7	42.4	48.3	60.3	76.1	88.9		114.3	139.7	165.1																																
	BS3600 (1997) & BS3601(1993) (PIPE ENDS TO BSS34 1990)	21.4	26.8	33.6	42.3	48.3	60.4	76.1	88.9	101.6	114.3	139.7	168.3	193.7	219.1	244.5	273.0	323.9	355.6		406.4	457.0	508.0		559.0	610.0	660.0		711.0	762.0	813.0	864.0	914.0	1016.0	1067.0		1219.0		1422.0	1626.0	1829.0	2032.0			
	API 5L (2000) & BS1600 (2000) UTI 36" NB	21.4	26.7	33.4	42.2	48.3	60.3	73.0	88.9	101.6	114.3	141.3	168.3			219.1		273.1	323.9	355.6		406.4	457.2	508.0		559.0	609.6	660.4		711.2	762.0	812.8	863.6	914.4	1016.0	1066.8	1117.6	1219.2	1320.8	1422.4	1625.6	1828.8	2032.0		
	BS3505 (1998)	21.4	26.8	33.6	42.3	48.3	60.4		88.9		114.3	140.2	168.3			219.1		273.0	323.9	355.6		406.4	457.2	508.0			609.6																		
PVC-U	BS3506 (1969)	21.4	26.8	33.6	42.3	48.3	60.4	75.2	88.9		114.3	140.2	168.3	193.8	219.1	244.5	273.0	323.9	355.5		406.4	457.2	508.0		558.8	609.6																			
ABS	BS5391 (1976)	21.4	26.8	33.6	42.3	48.3	60.4		88.8		114.3		168.3		219.1																														
DUCTILE IRON	BS EN 545 (2002), BS EN 588 (1995) BS4772 (1988) DIN 28601, 28602, 28603, 28605					56	66	82	98		118	144	170		222		274	326	378		429	480	532			635			738		842			945	1048		1152	1255		1462	1668	1875	2082		
GRP	BS4480 (1990) (TYPICAL UK SIZES)														220	272	324	376		427	478	530			633			718		820			924	1027		1144	1228	1350	1449	1640	1844	2048			
METRIC ASBESTOS CEMENT (TURNED END)	CLASS 15													177		232	259	286	334	392		448	498	568			634		761	808	862		927	970											
	CLASS 20															232	259	286	345	405		463	515	586			672		780	830	904		962	996											
	CLASS 25					69		96			122		177			240	268	295	356	419		478	532	605		691			801	852	915		977	1024											

Every effort has been made to ensure that the information contained in this publication is accurate at the time of publishing. Crane Ltd assumes no responsibility or liability for typographical errors or omissions or for any misinterpretation of the information within the publication and reserves the right to change without notice.
Crane BS&U are solely the provider of products and have no direct influence on, or take any responsibility for any working practices employed or depicted in the images enclosed to install such products.

Tel: +44 (0)1462 443322 • www.vikingjohnson.com

CRANE BUILDING SERVICES & UTILITIES

PIONEERS IN PIPE SOLUTIONS