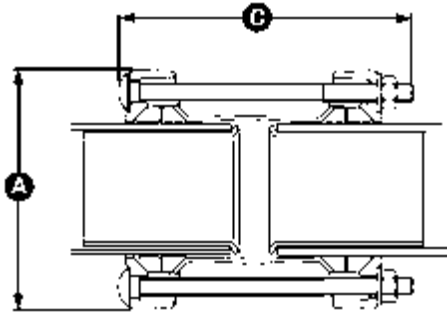


AquaGrip Couplings & Flange Adaptors up to 180mm

Datasheet 1/2

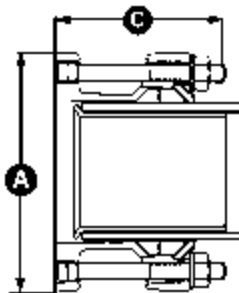
Coupling



AquaGrip Coupling Assembly (joins PE pipe to PE pipe)

Pipe OD	Dimensions (mm)		No. of Bolts	Bolts size (mm)	Gasket Mould No.	Weight (kg)
	A	C				
63	144	208	2	M12 x 200	6001	2.4
90	167.5	208	4	M12 x 200	1785	3.8
110	188	208	4	M12 x 200	1786	5.4
125	203	208	4	M12 x 200	1787	5.8
160	240	223	8	M12 x 215	1788	9.0
180	257.5	223	8	M12 x 215	1789	9.8

Flange Adaptor



AquaGrip Flange Adaptor Assembly (joins PE pipe to flanged equipment)

Pipe OD	Dimensions (mm)		No. of T-Bolts	T-Bolt size (mm)	Flange specification nom (mm)	Gasket Mould No.	Weight (kg)
	A	C					
63	200	123	2	M12 x 115	50/80 PN10/16	6001	3.6
90	200	123	4	M12 x 115	80 PN10/16	1785	3.8
110	220	123	4	M12 x 115	100 PN10 & 16	1786	4.2
125	220	123	4	M12 x 115	100 PN10 & 16	1787	4.3
160	285	129	8	M12 x 115	150 PN10 & 16	1788	8.1
180	285	129	8	M12 x 115	150 PN10 & 16	1789	8.5

Every effort has been made to ensure that the information contained in this publication is accurate at the time of publishing. Crane Ltd assumes no responsibility or liability for typographical errors or omissions or for any misinterpretation of the information within the publication and reserves the right to change without notice.

DR10998_01_10_2024_ISSUE 8

AquaGrip Couplings & Flange Adaptor up to 180mm

Datasheet

2/2

Technical Information

Working Pressure Rating

Water 16 bar

Gas not approved

Vacuum Pressure

Capable of accommodating a vacuum pressure of -0.7 bar

Site Test Pressure

1.5 times working pressure for short duration (2 hours)

Pipe Material / Support Liner

AquaGrip can be used on the following pipe materials with a Viking Johnson support liner:-

- ▶ MDPE (PE80) and HPPE (PE100) in SDR ratings 11, 17, 17,6, & 21
- ▶ MDPE (PE80) and HPPE (PE100) in SDR26 is also available for 125mm and 160mm

Angularity (in accordance with BS EN 12842)

Couplings 1.5° per end

Flange Adaptors 1.5°

Bolt Torque/Spanner

Torque 55-65Nm on every bolt

Spanner size A/F 19mm

Temperature Rating of Product

EPDM -20°C to +40°C

AquaGrip is not suitable for use on heating systems with fluctuating temperatures.

End Load Due to Internal Pressure

AquaFast Fully restrained fitting, and has been designed to meet the performance requirements of BS EN 12842, ISO 178875 (supersedes ISO 12436.2) and ISO 4-01-02 Type 1 (formerly WIS 4-24-01).

Approvals

The following water contact materials used in AquaGrip are approved for use with potable water:-

Rilsan Nylon 11:

- ▶ WRAS, DVGW, W270, ACS & KIWA

EPDM Gaskets:

- ▶ WRAS

In addition to the above, AquaGrip as a finished product has KIWA certification verifying that the above products comply with the requirements of the Water Supply (Water Fittings) Regulations for England and Wales 1999, the Water Byelaws 2000, Scotland and the Water Regulations Northern Ireland.

Materials & Relevant Standards

End Rings & Flange Adaptor Body

SG iron to BS EN 1563 Symbol EN-GJS-450-10.

Centre Sleeve/Liners

Mild steel to BS EN 10025 Grade S 275

Gasket

EPDM compound 80 IRHD Grade 'E' to BS EN 681-1 Type WA.

Coating

Flange Adaptor Body, Centre Sleeve & End Rings:

- ▶ Rilsan Nylon 11 to WIS 4-52-01

Bolts:

- ▶ Blue Sheraplex followed by dry film lubricant (Ilex).

Bolts

To BS EN ISO 898-1 Property Class 4.8.

Nuts

To BS 4190 Grade 4.

Washers

Stainless steel - BS 1449: PT2 Grade 304 S 15

Gripper

Acetal copolymer Grade M90 or equivalent.

Every effort has been made to ensure that the information contained in this publication is accurate at the time of publishing. Crane Ltd assumes no responsibility or liability for typographical errors or omissions or for any misinterpretation of the information within the publication and reserves the right to change without notice.

DR10998_01_10_2024_ISSUE 8