

ALL PRODUCT DIMENSIONS ARE BEFORE COATING

REFERENCE DRAWING ONLY - NOT TO BE USED FOR INSPECTION PURPOSES

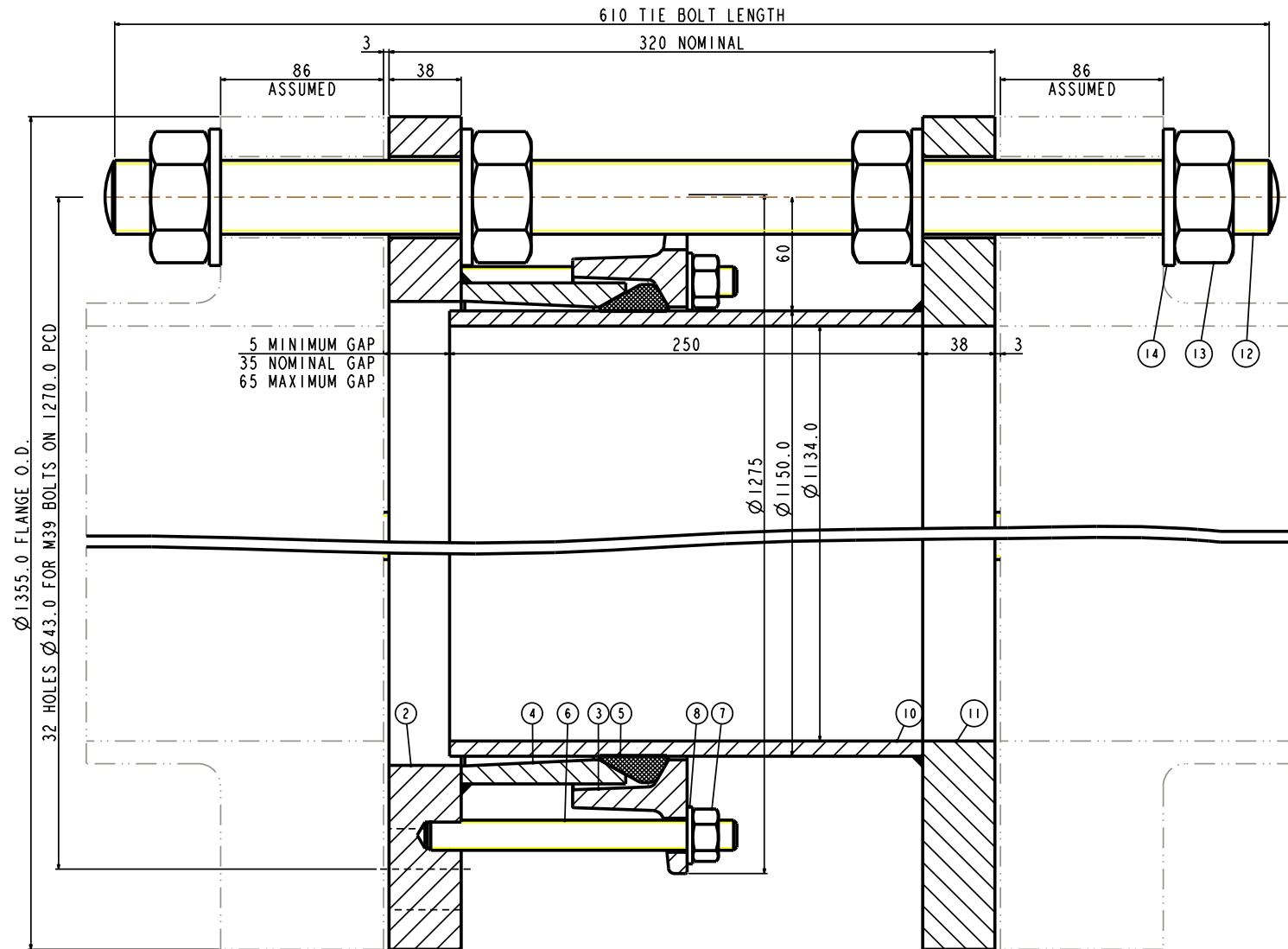
DO NOT SCALE

MATERIAL SPECIFICATION

FLANGE ADAPTOR ASSEMBLY (Part 1)
 FLANGE (Part 2)
 STEEL to
 BS EN10025-2:2004 GRADE S275JR
 END RING (Part 3)
 STEEL to
 BS EN10025-2:2004 GRADE S275JR
 CENTRIC SLEEVE (Part 4)
 STEEL to
 BS EN10025-2:2004 GRADE S355JR
 GASKET (Part 5)
 RUBBER 70 HARDNESS
 Grade to suit service
 STUDS (Part 6)
 STEEL to
 BS EN 150898-1:2013 PROPERTY CLASS 4.8
 NUTS (Part 7)
 STEEL to
 BS4190:2001 GRADE 4
 WASHERS (Part 8)
 STAINLESS STEEL to
 BS1449:PART 2:1983 GRADE 304S15
 SPIGOT PIPE ASSEMBLY (Part 9)
 SPIGOT PIPE (Part 10)
 SPIGOT PIPE MADE FROM TUBE
 STEEL TUBE to BS EN10255:2004 or
 STEEL TUBE to
 BS EN10216-1:2002 GRADE P265TR1
 SPIGOT PIPE MADE FROM FLAT BAR
 STEEL to
 BS EN10025-2:2004 GRADE S275JR
 SPIGOT FLANGE (Part 11)
 STEEL to
 BS EN10025-2:2004 GRADE S275JR
 TIE BOLT (Part 12)
 STEEL to
 BS EN10269:1999+A1:2006 NAME 42CrMo4
 NUTS (Part 13)
 STEEL to
 BS EN20898-2:1994 PROPERTY CLASS 8.0
 WASHERS (Part 14)
 STEEL to
 BS EN10269:1999+A1:2006 NAME 42CrMo4

FINISH SPECIFICATION

NOTES



FLANGE DRILLING	WORKING PRESSURE	TEST PRESSURE	GASKET	STUDS NO-SIZE	NO OF NOTCHES	TIE BOLTS NO-SIZE	WEIGHT KG	ASSEMBLY DRG NO
1100 PN16	16.0bar	24.0bar	J12IM	16-M16x160	8	8-M39x610	405	10435_452

OVERALL DIMENSIONS DRAWING
 FOR REFERENCE ONLY
 VIKING JOHNSON RESERVE THE
 RIGHT TO AMEND DETAILS WITHOUT
 PRIOR NOTIFICATION

This drawing is the exclusive property of VIKING JOHNSON and
 is confidential and must not be reproduced or disclosed to a third
 party without written consent. It must be used only for the
 purpose specified and is not to be used for any other purpose.

CRANE A Crane Co Company

OVERALL DIMENSIONS OF
 DISMANTLING JOINT ASSEMBLY - A2E SECTION
 ASSEMBLY - A2E SECTION
 FOR 1100 PN16 FLANGE DRILLING

RELEASE LEVEL : Concept

SHEET 1 OF 2

VIKING JOHNSON
 World leaders in pipe joints and repair products

DRAWN AUTO SCALE 0.050
 DATE 24/10/13 GENERIC 10435_A2E_UT

DRG NO SKP2496-1

ISOMETRIC VIEW

ALL PRODUCT DIMENSIONS ARE BEFORE COATING

REFERENCE DRAWING ONLY - NOT TO BE USED FOR INSPECTION PURPOSES

DO NOT SCALE

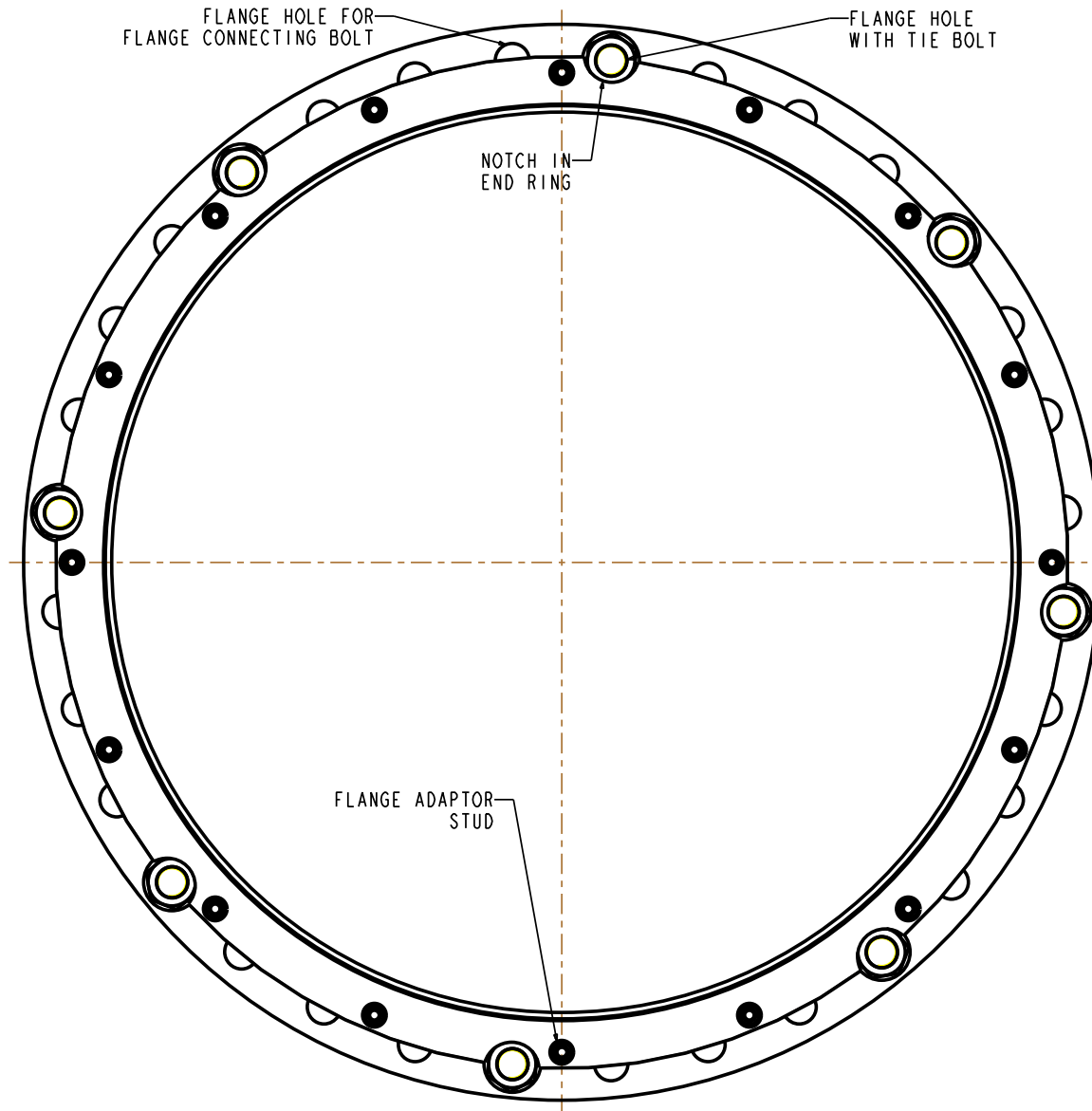
MATERIAL SPECIFICATION

FLANGE ADAPTOR ASSEMBLY (Part 1)
FLANGE (Part 2)
 STEEL to
 BS EN10025-2:2004 GRADE S275JR
END RING (Part 3)
 STEEL to
 BS EN10025-2:2004 GRADE S275JR
CENTRE SLEEVE (Part 4)
 STEEL to
 BS EN10025-2:2004 GRADE S355JR
GASKET (Part 5)
 RUBBER 70 HARDNESS
 Grade to suit service
STUDS (Part 6)
 STEEL to
 BS EN ISO898-1:2013PROPERTY CLASS 4.8
NUTS (Part 7)
 STEEL to
 BS4190:2001 GRADE 4
WASHERS (Part 8)
 STAINLESS STEEL to
 BS1449:PART 2:1983 GRADE 304S15
SPIGOT PIECE ASSEMBLY (Part 9)
SPIGOT PIPE (Part 10)
SPIGOT PIPE MADE FROM TUBE
 STEEL TUBE to BS EN10255:2004 or
 STEEL TUBE to
 BS EN10216-1:2002GRADE P265TR1
SPIGOT PIPE MADE FROM FLAT BAR
 STEEL to
 BS EN10025-2:2004 GRADE S275JR
SPIGOT FLANGE (Part 11)
 STEEL to
 BS EN10025-2:2004 GRADE S275JR
TIE BOLT (Part 12)
 STEEL to
 BS EN10269:1999+A1:2006 NAME 42CrMo4
NUTS (Part 13)
 STEEL to
 BS EN20898-2:1994 PROPERTY CLASS 8.0
WASHERS (Part 14)
 STEEL to
 BS EN10269:1999+A1:2006 NAME 42CrMo4

FINISH SPECIFICATION

NOTES

ISOMETRIC VIEW



OVERALL DIMENSIONS DRAWING
 FOR REFERENCE ONLY
 VIKING JOHNSON RESERVE THE
 RIGHT TO AMEND DETAILS WITHOUT
 PRIOR NOTIFICATION

This drawing is the exclusive property of VIKING JOHNSON and is confidential and must not be reproduced or disclosed to a third party without written consent. It must be used only for the purpose which it has been issued and is returnable on request.

OVERALL DIMENSIONS OF
 DISMANTLING JOINT ASSEMBLY - A2E SECTION
 ASSEMBLY - A2E SECTION
 FOR 1100 PN16 FLANGE DRILLING

RELEASE LEVEL: Concept

SHEET 2 OF 2

VIKING JOHNSON
 World leaders in pipe joints and repair products

DRAWN	AUTO	SCALE	0.059
DATE	24/10/13	GENERIC	10435_A2E_UT

DRG NO SKP2496-1