

ALL PRODUCT DIMENSIONS ARE BEFORE COATING

REFERENCE DRAWING ONLY - NOT TO BE USED FOR INSPECTION PURPOSES



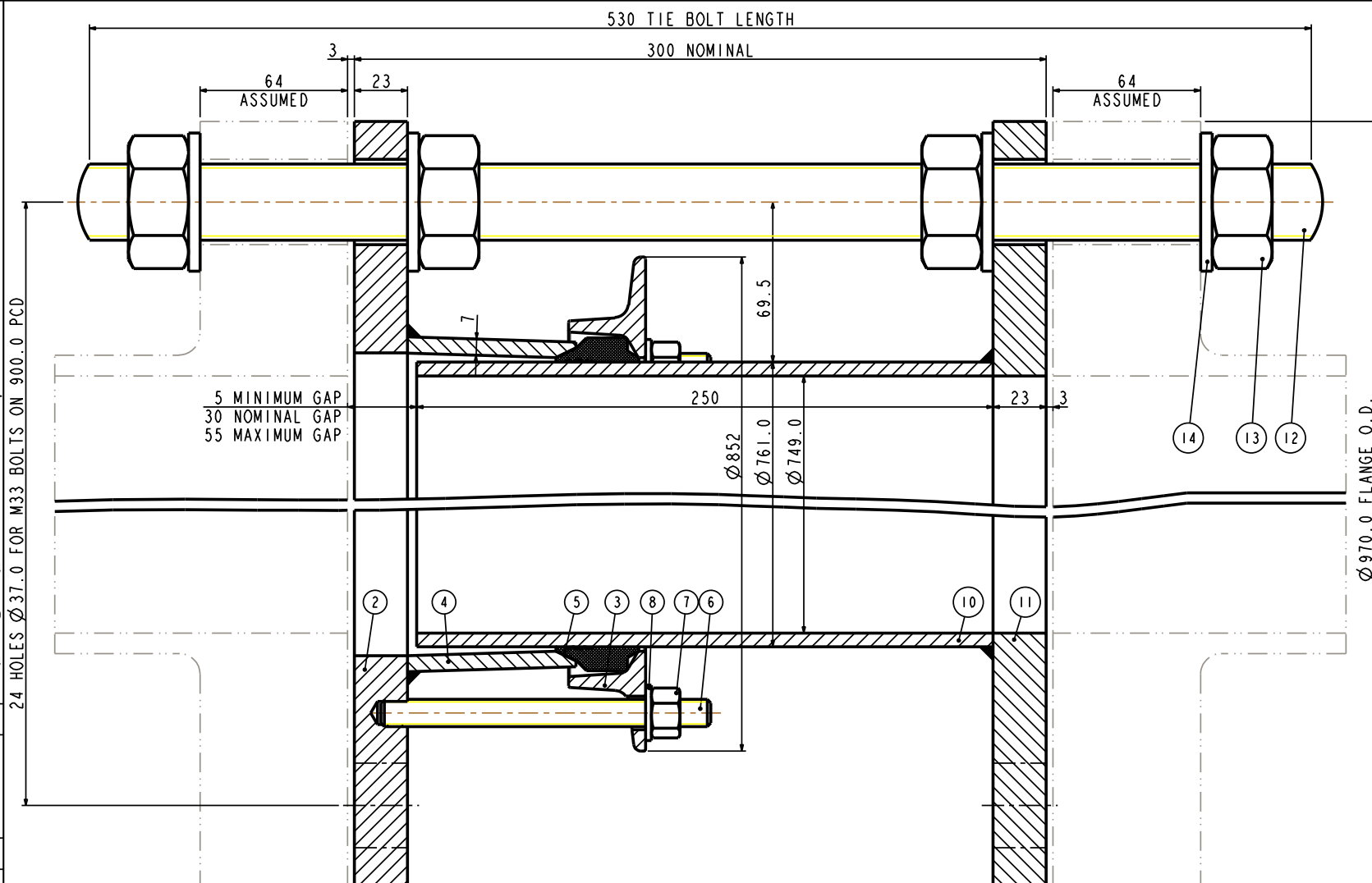
DO NOT SCALE

MATERIAL SPECIFICATION

FLANGE ADAPTOR ASSEMBLY (Part 1)
FLANGE (Part 2)
 STEEL to
 BS EN10025-2:2004 GRADE S275JR
END RING (Part 3)
 STEEL to
 BS EN10025-2:2004 GRADE S275JR
CENTRE SLEEVE (Part 4)
 STEEL to
 BS EN10025-2:2004 GRADE S275JR
GASKET (Part 5)
 RUBBER 80 HARDNESS
 Grade to suit service
STUDS (Part 6)
 STEEL to
 BS EN ISO898-1:2013PROPERTY CLASS 4.8
NUTS (Part 7)
 STEEL to
 BS4190:2001 GRADE 4
WASHERS (Part 8)
 STAINLESS STEEL to
 BS1449:PART 2:1983 GRADE 304S15
SPIGOT PIECE ASSEMBLY (Part 9)
SPIGOT PIPE (Part 10)
SPIGOT PIPE MADE FROM TUBE
 STEEL TUBE to BS EN10255:2004 or
 STEEL TUBE to
 BS EN10216-1:2013GRADE P265TRI
SPIGOT PIPE MADE FROM FLAT BAR
 STEEL to
 BS EN10025-2:2004 GRADE S275JR
SPIGOT FLANGE (Part 11)
 STEEL to
 BS EN10025-2:2004 GRADE S275JR
TIE BOLT (Part 12)
 STEEL to
 BS EN10269:1999+A1:2006 NAME 42CrMo4
NUTS (Part 13)
 STEEL to
 BS EN20898-2:1994 PROPERTY CLASS 8.0
WASHERS (Part 14)
 STEEL to
 BS EN10269:1999+A1:2006 NAME 42CrMo4

FINISH SPECIFICATION

NOTES



FLANGE DRILLING	WORKING PRESSURE	TEST PRESSURE	GASKET	STUDS NO-SIZE	NO OF NOTCHES	TIE BOLTS NO-SIZE	WEIGHT KG	ASSEMBLY DRG NO
750 PN16	16.0bar	24.0bar	J64LS	12-M12x140	NOT REQUIRED	6-M33x530	172.0Kg	10435-15

OVERALL DIMENSIONS DRAWING
FOR REFERENCE ONLY
VIKING JOHNSON RESERVE THE
RIGHT TO AMEND DETAILS WITHOUT
PRIOR NOTIFICATION

This drawing is the exclusive property of VIRING JOHNSON and is confidential and must not be reproduced or disclosed to a third party without written consent. It must be used only for the purpose which it has been issued and is returnable on request.

CRANE A Crane Co Company

OVERALL DIMENSIONS OF
DISMANTLING JOINTS ASSEMBLY - LO2 SECTION
FOR 750 PN16 FLANGE DRILLING



DRAWN	AUTO	SCALE	1.000
DATE	02/04/14	GENERIC	10435_LO2_UT

DRG NO SKP1335-1

RELEASE LEVEL: Concept

SHEET 1 OF 2

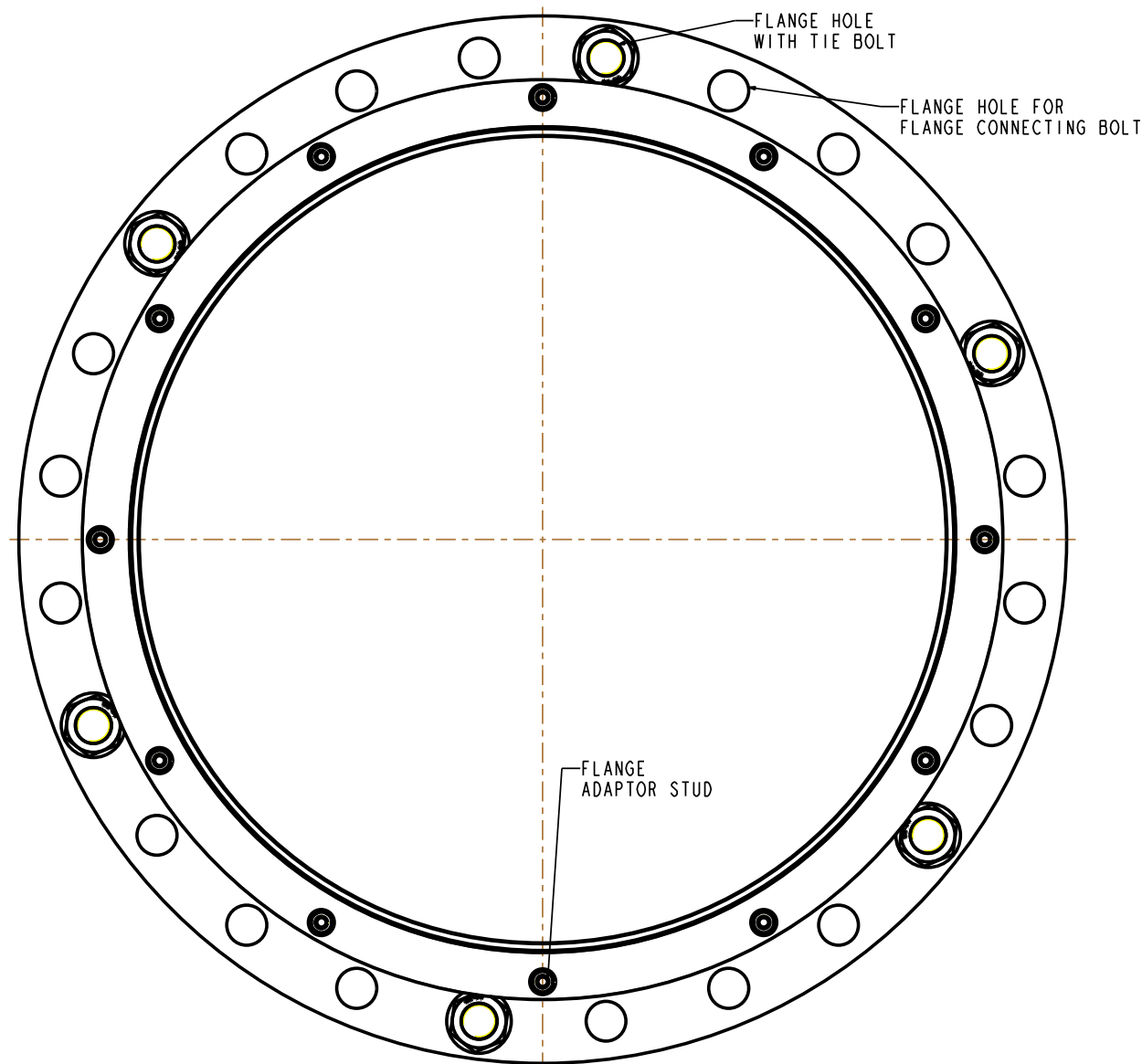
ALL PRODUCT DIMENSIONS ARE BEFORE COATING

REFERENCE DRAWING ONLY - NOT TO BE USED FOR INSPECTION PURPOSES

DO NOT SCALE

MATERIAL SPECIFICATION
FLANGE ADAPTOR ASSEMBLY (Part 1) FLANGE (Part 2) STEEL to BS EN10025-2:2004 GRADE S275JR END RING (Part 3) STEEL to BS EN10025-2:2004 GRADE S275JR CENTRE SLEEVE (Part 4) STEEL to BS EN10025-2:2004 GRADE S275JR GASKET (Part 5) RUBBER 80 HARDNESS Grade to suit service STUDS (Part 6) STEEL to BS EN ISO898-1:2013PROPERTY CLASS 4.8 NUTS (Part 7) STEEL to BS4190:2001 GRADE 4 WASHERS (Part 8) STAINLESS STEEL to BS1449:PART 2:1983 GRADE 304S15 SPIGOT PIECE ASSEMBLY (Part 9) SPIGOT PIPE (Part 10) SPIGOT PIPE MADE FROM TUBE STEEL TUBE to BS EN10255:2004 or STEEL TUBE to BS EN10216-1:2013GRADE P265TR1 SPIGOT PIPE MADE FROM FLAT BAR STEEL to BS EN10025-2:2004 GRADE S275JR SPIGOT FLANGE (Part 11) STEEL to BS EN10025-2:2004 GRADE S275JR TIE BOLT (Part 12) STEEL to BS EN10269:1999+A1:2006 NAME 42CrMo4 NUTS (Part 13) STEEL to BS EN20898-2:1994 PROPERTY CLASS 8.0 WASHERS (Part 14) STEEL to BS EN10269:1999+A1:2006 NAME 42CrMo4

FINISH SPECIFICATION
NOTES



OVERALL DIMENSIONS DRAWING
FOR REFERENCE ONLY
VIKING JOHNSON RESERVE THE
RIGHT TO AMEND DETAILS WITHOUT
PRIOR NOTIFICATION

This drawing is the exclusive property of VIKING JOHNSON and is confidential and must not be reproduced or disclosed to a third party without written consent. It must be used only for the purpose which it has been issued and is returnable on request.

CRANE A Crane Co Company

TIE BOLT SPACING FOR
DISMANTLING JOINTS ASSEMBLY - L02 SECTION
FOR 750 PN16 FLANGE DRILLING

RELEASE LEVEL: Concept

SHEET 2 OF 2

VIKING JOHNSON
World leaders in pipe joints and repair products

DRAWN	AUTO	SCALE	1:000
DATE	02/04/14	GENERIC	10435_L02_UT

DRG NO SKP1335-1