

ALL PRODUCT DIMENSIONS ARE BEFORE COATING

REFERENCE DRAWING ONLY - NOT TO BE USED FOR INSPECTION PURPOSES

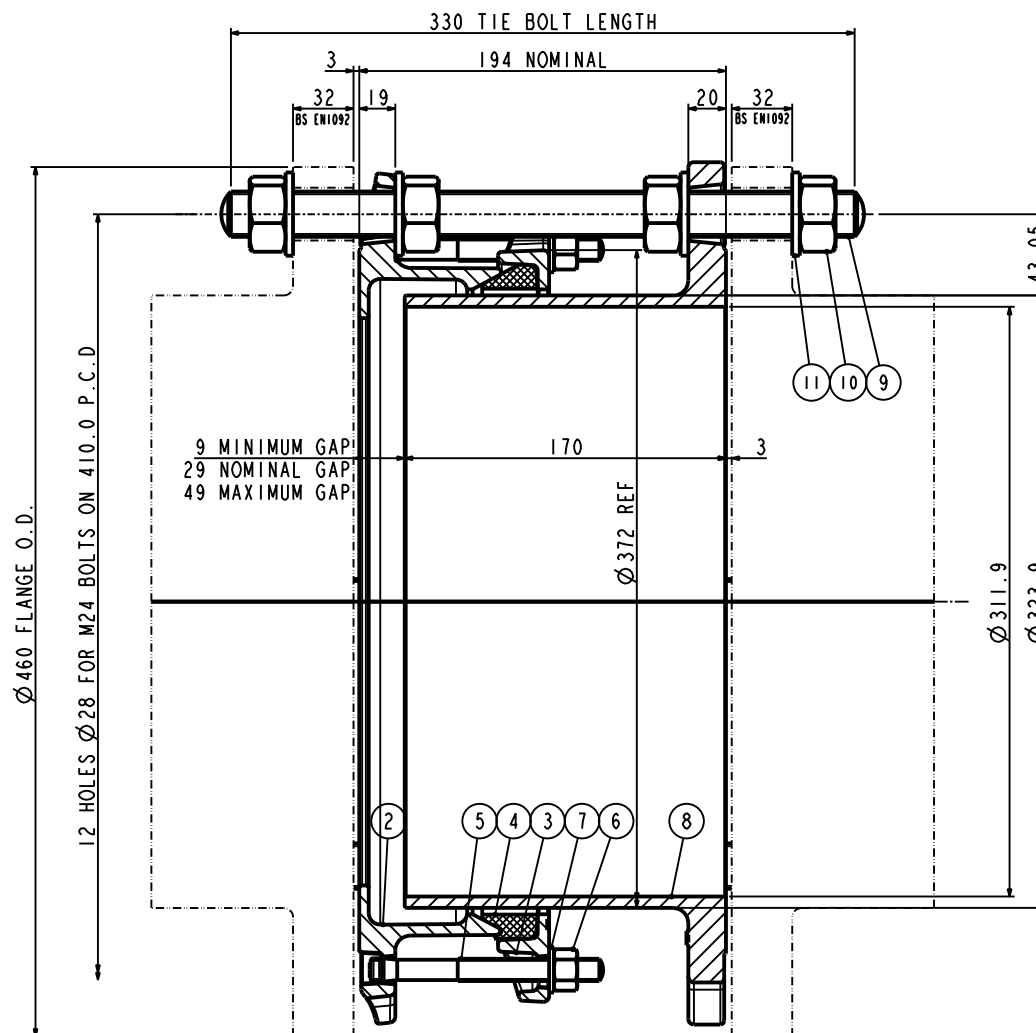
DO NOT SCALE

MATERIAL SPECIFICATION

FLANGE ADAPTOR ASSEMBLY (Part 1)
FLANGE ADAPTOR (Part 2)
 DUCTILE IRON BS EN1563
 SYMBOL EN-GJS-450-10
END RING (Part 3)
 DUCTILE IRON BS EN1563
 SYMBOL EN-GJS-450-10
GASKET (Part 4)
 RUBBER 80 HARDNESS
 Grade to suit service
TEE-BOLTS (Part 5)
 STEEL to
 BS EN ISO898-1 PROPERTY CLASS 4.8
NUTS (Part 6)
 STEEL to
 BS4190 GRADE 4
WASHERS (Part 7)
 STAINLESS STEEL to
 BS1449:PART 2 GRADE 304S15
SPIGOT PIECE (Part 8)
 DUCTILE IRON BS EN1563
 SYMBOL EN-GJS-450-10
TIE BOLT (Part 9)
 STEEL to
 BS EN10269+A1NAME 42CrMo4
NUTS (Part 10)
 STEEL to
 BS EN20898-2 PROPERTY CLASS 8.0
WASHERS (Part 11)
 STEEL to
 BS EN10269+A1NAME 42CrMo4

FINISH SPECIFICATION

NOTES



| FLANGE DRILLING | WORKING PRESSURE | TEST PRESSURE | GASKET | STUDS NO-SIZE | TIE BOLTS NO-SIZE | WEIGHT Kg | ASSEMBLY DRG NO |
|-----------------|------------------|---------------|----------|---------------|-------------------|-----------|-----------------|
| 300PN16 | 16.0 bar | 24.0 bar | 12477_37 | 6-M12x115 | 4-M24x330 | 35.4 | 10435_385 |

OVERALL DIMENSIONS DRAWING FOR REFERENCE ONLY
 VIKING JOHNSON RESERVE THE RIGHT TO AMEND DETAILS WITHOUT PRIOR NOTIFICATION

This drawing is the exclusive property of VIKING JOHNSON and is confidential and must not be reproduced or disclosed to a third party without written consent. It must be used only for the purpose which it has been issued and is returnable on request.

OVERALL DIMENSIONS OF
 DISMANTLING JOINTS ASSEMBLY -QUICKFIT SECTION
 300PN16 FLANGE DRILLING



| DRAWN | AUTO | SCALE | 0.143 |
|-------|-----------|---------|------------------------|
| DATE | 13-Sep-17 | GENERIC | 10435_ALL_CAST-001MS.1 |

DRG NO SKP1052-1

ISOMETRIC VIEW

CRANE A Crane Co Company

RELEASE LEVEL: Concept

SHEET 1 OF 1