

# ALL PRODUCT DIMENSIONS ARE BEFORE COATING

REFERENCE DRAWING ONLY - NOT TO BE USED FOR INSPECTION PURPOSES

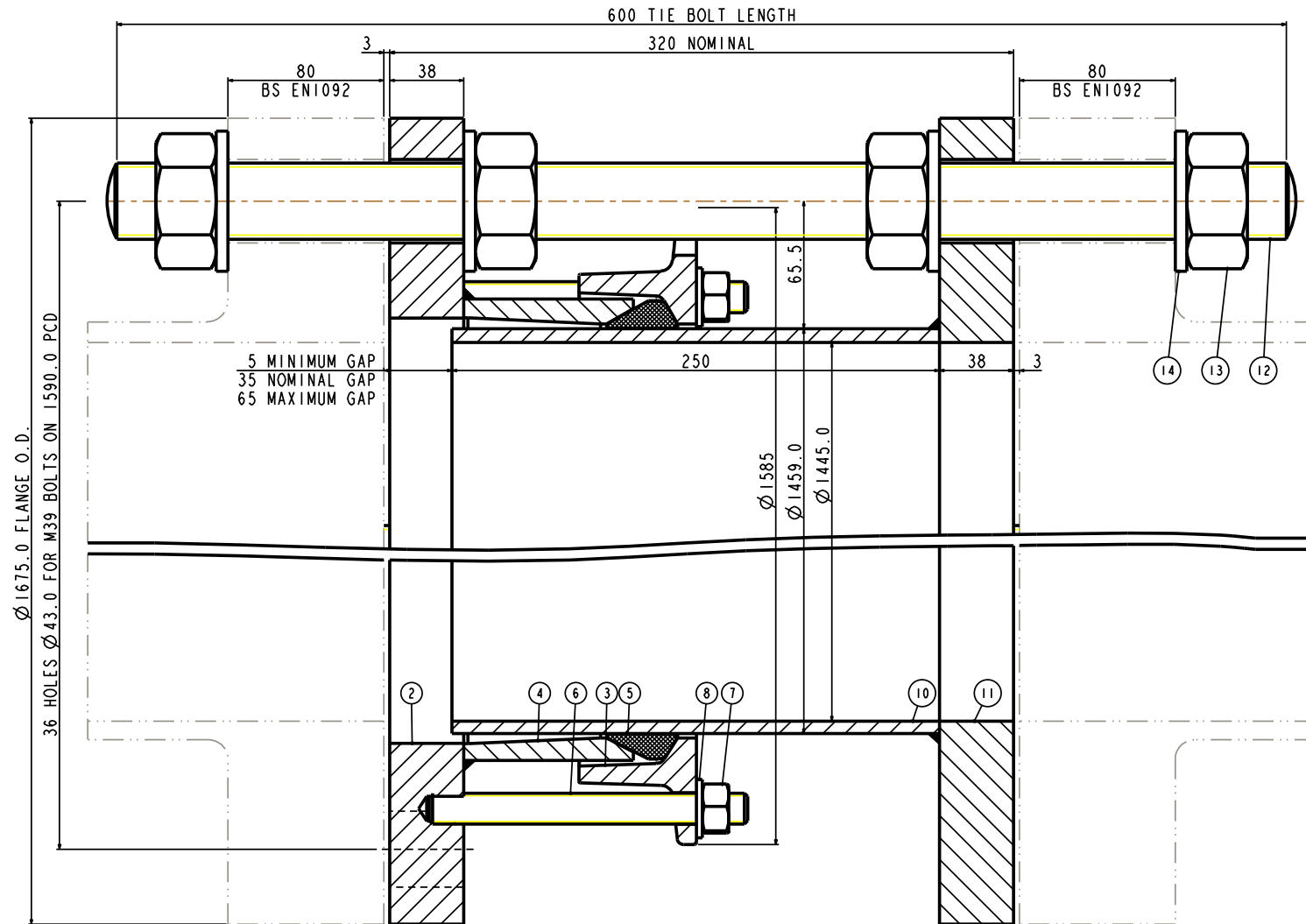
DO NOT SCALE

**MATERIAL SPECIFICATION**

FLANGE ADAPTOR ASSEMBLY (Part 1)  
 FLANGE (Part 2)  
 STEEL to  
 BS EN10025-2:2004 GRADE S275JR  
 END RING (Part 3)  
 STEEL to  
 BS EN10025-2:2004 GRADE S275JR  
 CENTRIC SLEEVE (Part 4)  
 STEEL to  
 BS EN10025-2:2004 GRADE S355JR  
 GASKET (Part 5)  
 RUBBER 70 HARDNESS  
 Grade to suit service  
 STUDS (Part 6)  
 STEEL to  
 BS EN 150898-1:2013 PROPERTY CLASS 4.8  
 NUTS (Part 7)  
 STEEL to  
 BS4190:2001 GRADE 4  
 WASHERS (Part 8)  
 STAINLESS STEEL to  
 BS1449:PART 2:1983 GRADE 304S15  
 SPIGOT PIPE ASSEMBLY (Part 9)  
 SPIGOT PIPE MADE FROM TUBE  
 STEEL TUBE to BS EN10255:2004 or  
 STEEL TUBE to  
 BS EN10216-1:2002 GRADE P265TRI  
 SPIGOT PIPE MADE FROM FLAT BAR  
 STEEL to  
 BS EN10025-2:2004 GRADE S275JR  
 SPIGOT FLANGE (Part 11)  
 STEEL to  
 BS EN10025-2:2004 GRADE S275JR  
 TIE BOLT (Part 12)  
 STEEL to  
 BS EN10269:1999+A1:2006 NAME 42CrMo4  
 NUTS (Part 13)  
 STEEL to  
 BS EN20898-2:1994 PROPERTY CLASS 8.0  
 WASHERS (Part 14)  
 STEEL to  
 BS EN10269:1999+A1:2006 NAME 42CrMo4

**FINISH SPECIFICATION**

**NOTES**



FLANGE DRILLING	WORKING PRESSURE	TEST PRESSURE	GASKET	STUDS NO-SIZE	NO OF NOTCHES	TIE BOLTS NO-SIZE	WEIGHT KG	ASSEMBLY DRG NO
1400 PN10	10.0bar	15.0bar	J125M	18-M16x160	9	9-M39x600	508	10435_457

OVERALL DIMENSIONS DRAWING  
 FOR REFERENCE ONLY  
 VIKING JOHNSON RESERVE THE  
 RIGHT TO AMEND DETAILS WITHOUT  
 PRIOR NOTIFICATION

This drawing is the exclusive property of VIKING JOHNSON and  
 is confidential and must not be reproduced or disclosed to a third  
 party without written consent. It must be used only for the  
 purpose specified and is not to be used for any other purpose.

CRANE A Crane Co Company

OVERALL DIMENSIONS OF  
 DISMANTLING JOINT ASSEMBLY - A2E SECTION  
 ASSEMBLY - A2E SECTION  
 FOR 1400 PN10 FLANGE DRILLING

**VIKING JOHNSON**  
 World leaders in pipe joints and repair products

DRAWN AUTO SCALE 0.059  
 DATE 28/05/13 GENERIC 10435\_A2E\_UT

DRG NO SKP1225-1

ISOMETRIC VIEW

RELEASE LEVEL : Concept

SHEET 1 OF 2

# ALL PRODUCT DIMENSIONS ARE BEFORE COATING

REFERENCE DRAWING ONLY - NOT TO BE USED FOR INSPECTION PURPOSES

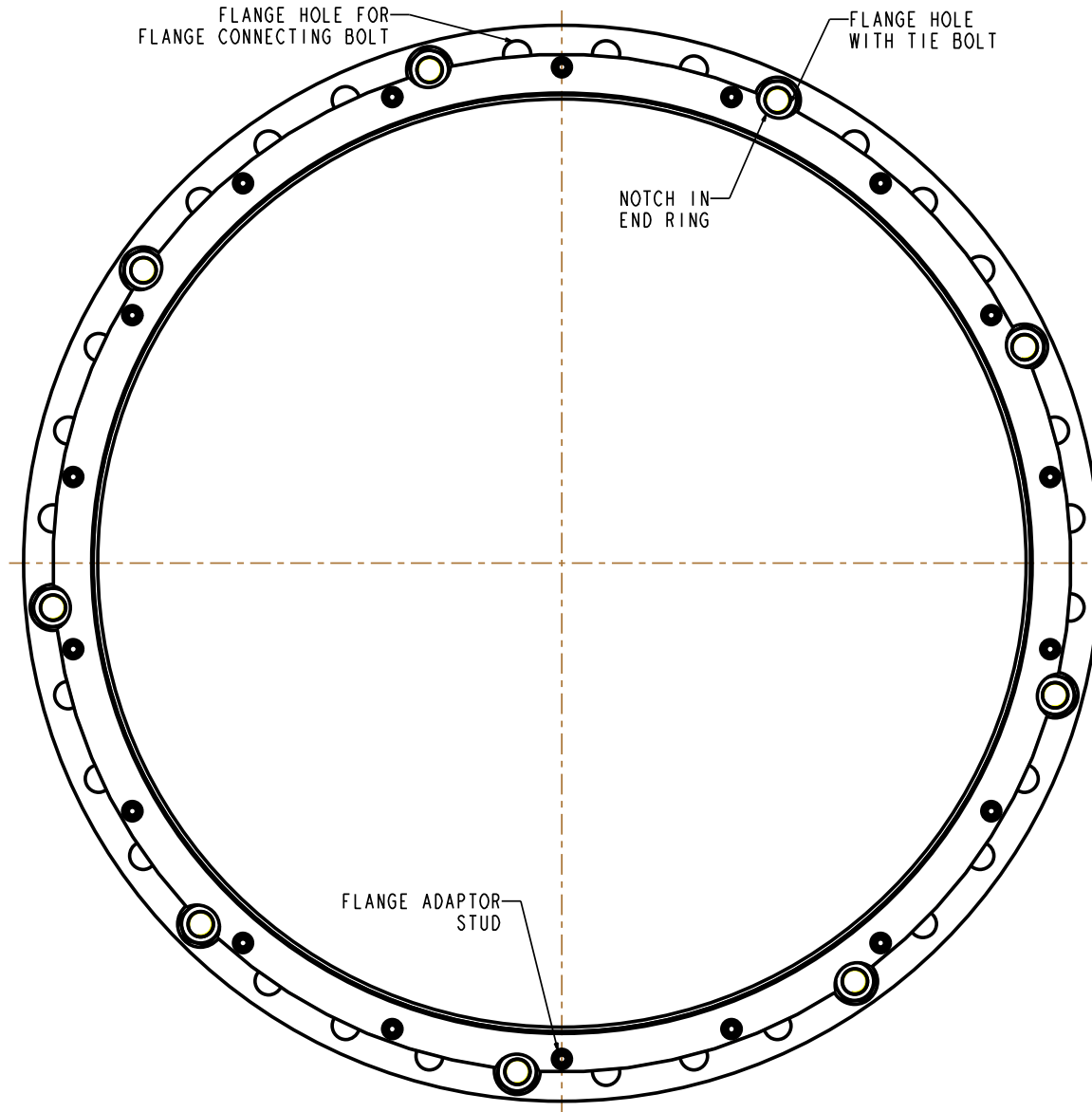
DO NOT SCALE

MATERIAL SPECIFICATION
<b>FLANGE ADAPTOR ASSEMBLY (Part 1)</b> <b>FLANGE (Part 2)</b> STEEL to BS EN10025-2:2004 GRADE S275JR <b>END RING (Part 3)</b> STEEL to BS EN10025-2:2004 GRADE S275JR <b>CENTRE SLEEVE (Part 4)</b> STEEL to BS EN10025-2:2004 GRADE S355JR <b>GASKET (Part 5)</b> RUBBER 70 HARDNESS Grade to suit service <b>STUDS (Part 6)</b> STEEL to BS EN ISO898-1:2013PROPERTY CLASS 4.8 <b>NUTS (Part 7)</b> STEEL to BS4190:2001 GRADE 4 <b>WASHERS (Part 8)</b> STAINLESS STEEL to BS1449:PART 2:1983 GRADE 304S15 <b>SPIGOT PIECE ASSEMBLY (Part 9)</b> <b>SPIGOT PIPE (Part 10)</b> <b>SPIGOT PIPE MADE FROM TUBE</b> STEEL TUBE to BS EN10255:2004 or STEEL TUBE to BS EN10216-1:2002GRADE P265TRI <b>SPIGOT PIPE MADE FROM FLAT BAR</b> STEEL to BS EN10025-2:2004 GRADE S275JR <b>SPIGOT FLANGE (Part 11)</b> STEEL to BS EN10025-2:2004 GRADE S275JR <b>TIE BOLT (Part 12)</b> STEEL to BS EN10269:1999+A1:2006 NAME 42CrMo4 <b>NUTS (Part 13)</b> STEEL to BS EN20898-2:1994 PROPERTY CLASS 8.0 <b>WASHERS (Part 14)</b> STEEL to BS EN10269:1999+A1:2006 NAME 42CrMo4

FINISH SPECIFICATION

NOTES

ISOMETRIC VIEW



OVERALL DIMENSIONS DRAWING  
FOR REFERENCE ONLY  
VIKING JOHNSON RESERVE THE  
RIGHT TO AMEND DETAILS WITHOUT  
PRIOR NOTIFICATION

This drawing is the exclusive property of VIKING JOHNSON and is confidential and must not be reproduced or disclosed to a third party without written consent. It must be used only for the purpose which it has been issued and is returnable on request.

**CRANE** A Crane Co Company

OVERALL DIMENSIONS OF  
DISMANTLING JOINT ASSEMBLY - A2E SECTION  
ASSEMBLY - A2E SECTION  
FOR 1400 PN10 FLANGE DRILLING

RELEASE LEVEL: Concept

SHEET 2 OF 2

**VIKING JOHNSON**  
World leaders in pipe joints and repair products

DRAWN	AUTO	SCALE	0.059
DATE	28/05/13	GENERIC	10435_A2E_UT

DRG NO SKP1225-1