

# ALL PRODUCT DIMENSIONS ARE BEFORE COATING

REFERENCE DRAWING ONLY - NOT TO BE USED FOR INSPECTION PURPOSES

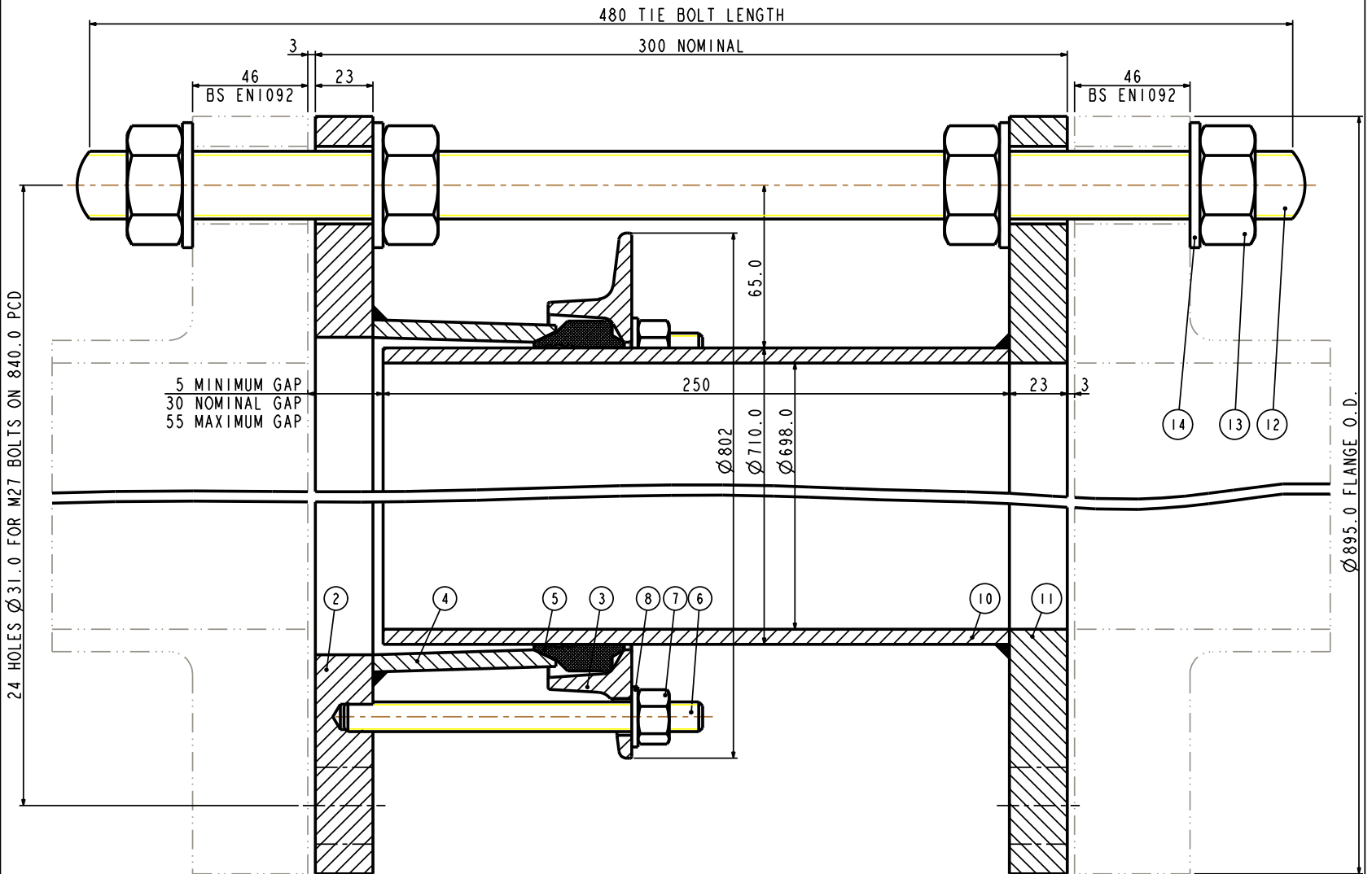
DO NOT SCALE

## MATERIAL SPECIFICATION

**FLANGE ADAPTOR ASSEMBLY (Part 1)**  
**FLANGE (Part 2)**  
 STEEL to  
 BS EN10025-2:2004 GRADE S275JR  
**END RING (Part 3)**  
 STEEL to  
 BS EN10025-2:2004 GRADE S275JR  
**CENTRE SLEEVE (Part 4)**  
 STEEL to  
 BS EN10025-2:2004 GRADE S275JR  
**GASKET (Part 5)**  
 RUBBER 80 HARDNESS  
 Grade to suit service  
**STUDS (Part 6)**  
 STEEL to  
 BS EN ISO898-1:2009 PROPERTY CLASS 4.8  
**NUTS (Part 7)**  
 STEEL to  
 BS4190:2001 GRADE 4  
**WASHERS (Part 8)**  
 STAINLESS STEEL to  
 BS1449:PART 2:1983 GRADE 304S15  
**SPIGOT PIECE ASSEMBLY (Part 9)**  
**SPIGOT PIPE (Part 10)**  
**SPIGOT PIPE MADE FROM TUBE**  
 STEEL TUBE to BS EN10255:2004 or  
 STEEL TUBE to  
 BS EN10216-1:2002 GRADE P265TRI  
**SPIGOT PIPE MADE FROM FLAT BAR**  
 STEEL to  
 BS EN10025-2:2004 GRADE S275JR  
**SPIGOT FLANGE (Part 11)**  
 STEEL to  
 BS EN10025-2:2004 GRADE S275JR  
**TIE BOLT (Part 12)**  
 STEEL to  
 BS EN10269:1999+A1:2006 NAME 42CrMo4  
**NUTS (Part 13)**  
 STEEL to  
 BS EN20898-2:1994 PROPERTY CLASS 8.0  
**WASHERS (Part 14)**  
 STEEL to  
 BS EN10269:1999+A1:2006 NAME 42CrMo4

## FINISH SPECIFICATION

## NOTES



FLANGE DRILLING	WORKING PRESSURE	TEST PRESSURE	GASKET	STUDS NO-SIZE	NO OF NOTCHES	TIE BOLTS NO-SIZE	WEIGHT KG	ASSEMBLY DRG NO
700 PN10	10.0bar	15.0bar	J63LS	12-M12x140	NOT REQUIRED	6-M27x480	141.0Kg	10435.55

OVERALL DIMENSIONS DRAWING  
 FOR REFERENCE ONLY  
 VIKING JOHNSON RESERVE THE  
 RIGHT TO AMEND DETAILS WITHOUT  
 PRIOR NOTIFICATION

This drawing is the exclusive property of VIKING JOHNSON and is confidential and must not be reproduced or disclosed to a third party without written consent. It must be used only for the purpose which it has been issued and is returnable on request.

CRANE A Crane Co Company



OVERALL DIMENSIONS OF  
 DISMANTLING JOINTS ASSEMBLY - L02 SECTION  
 FOR 700 PN10 FLANGE DRILLING

RELEASE LEVEL: Concept

SHEET 1 OF 2



DRAWN	AUTO	SCALE	1.000
DATE	05/11/12	GENERIC	10435.L02.UT

DRG NO SKP1273-1

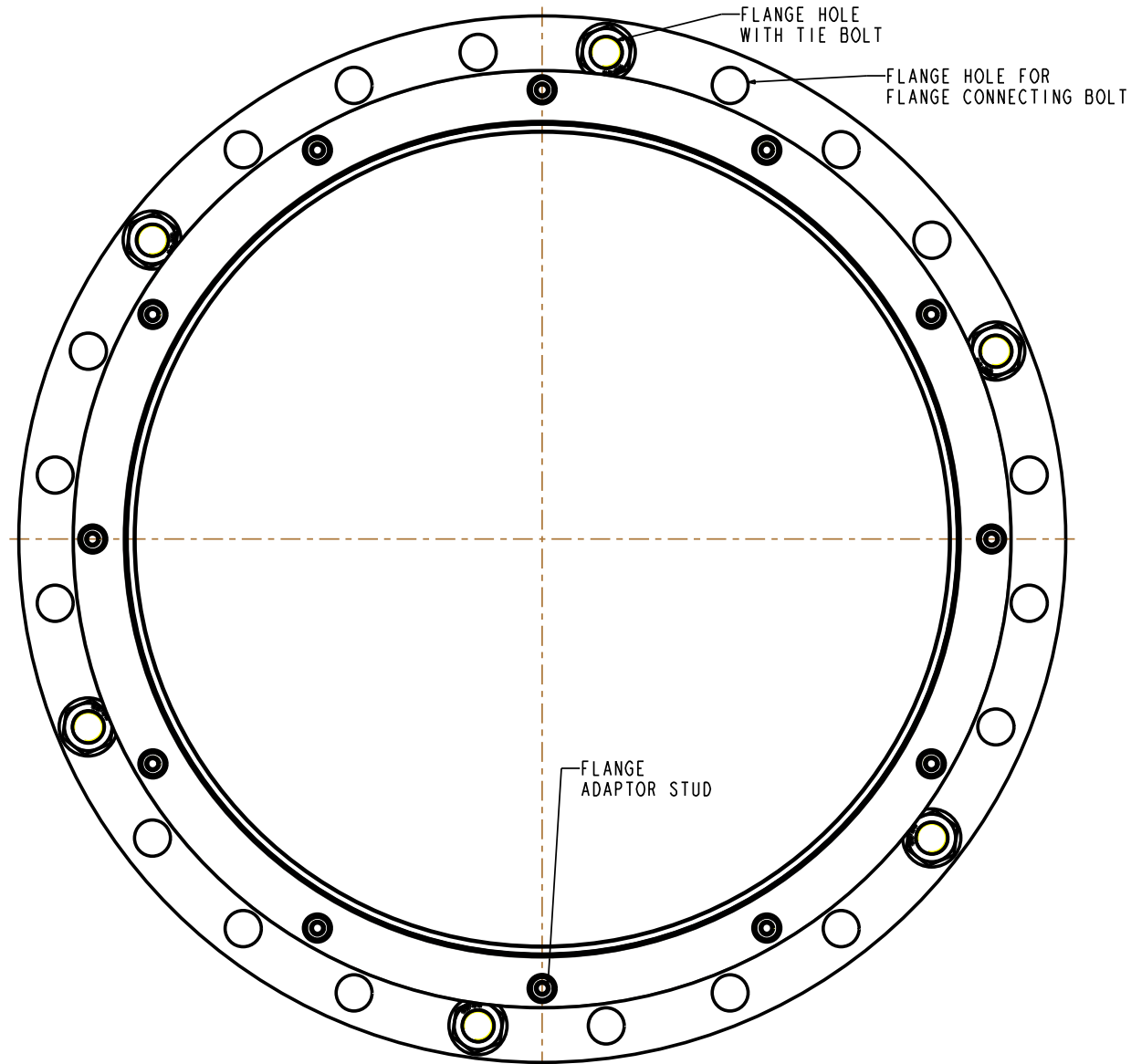
# ALL PRODUCT DIMENSIONS ARE BEFORE COATING

REFERENCE DRAWING ONLY - NOT TO BE USED FOR INSPECTION PURPOSES

DO NOT SCALE

MATERIAL SPECIFICATION
<b>FLANGE ADAPTOR ASSEMBLY (Part 1)</b> <b>FLANGE (Part 2)</b> STEEL to BS EN10025-2:2004 GRADE S275JR <b>END RING (Part 3)</b> STEEL to BS EN10025-2:2004 GRADE S275JR <b>CENTRE SLEEVE (Part 4)</b> STEEL to BS EN10025-2:2004 GRADE S275JR <b>GASKET (Part 5)</b> RUBBER 80 HARDNESS Grade to suit service <b>STUDS (Part 6)</b> STEEL to BS EN ISO898-1:2009 PROPERTY CLASS 4.8 <b>NUTS (Part 7)</b> STEEL to BS4190:2001 GRADE 4 <b>WASHERS (Part 8)</b> STAINLESS STEEL to BS1449:PART 2:1983 GRADE 304S15 <b>SPIGOT PIECE ASSEMBLY (Part 9)</b> <b>SPIGOT PIPE (Part 10)</b> <b>SPIGOT PIPE MADE FROM TUBE</b> STEEL TUBE to BS EN10255:2004 or STEEL TUBE to BS EN10216-1:2002 GRADE P265TR1 <b>SPIGOT PIPE MADE FROM FLAT BAR</b> STEEL to BS EN10025-2:2004 GRADE S275JR <b>SPIGOT FLANGE (Part 11)</b> STEEL to BS EN10025-2:2004 GRADE S275JR <b>TIE BOLT (Part 12)</b> STEEL to BS EN10269:1999+A1:2006 NAME 42CrMo4 <b>NUTS (Part 13)</b> STEEL to BS EN20898-2:1994 PROPERTY CLASS 8.0 <b>WASHERS (Part 14)</b> STEEL to BS EN10269:1999+A1:2006 NAME 42CrMo4

FINISH SPECIFICATION
NOTES



OVERALL DIMENSIONS DRAWING  
FOR REFERENCE ONLY  
VIKING JOHNSON RESERVE THE  
RIGHT TO AMEND DETAILS WITHOUT  
PRIOR NOTIFICATION

This drawing is the exclusive property of VIKING JOHNSON and is confidential and must not be reproduced or disclosed to a third party without written consent. It must be used only for the purpose which it has been issued and is returnable on request.

**CRANE** A Crane Co Company

TIE BOLT SPACING FOR  
DISMANTLING JOINTS ASSEMBLY - L02 SECTION  
FOR 700 PN10 FLANGE DRILLING

RELEASE LEVEL: Concept

SHEET 2 OF 2

**VIKING JOHNSON**  
World leaders in pipe joints and repair products

DRAWN	AUTO	SCALE	1:000
DATE	05/11/12	GENERIC	10435_L02_UT

DRG NO SKP1273-1