

ALL PRODUCT DIMENSIONS ARE BEFORE COATING

REFERENCE DRAWING ONLY - NOT TO BE USED FOR INSPECTION PURPOSES

DO NOT SCALE

MATERIAL SPECIFICATION

FLANGE ADAPTOR ASSEMBLY (Part 1)
FLANGE (Part 2)
 STEEL to
 BS EN10025-2 GRADE S275JR
END RING (Part 3)
 STEEL to
 BS EN10025-2 GRADE S275JR
CENTRE SLEEVE (Part 4)
 STEEL to
 BS EN10025-2 GRADE S275JR
GASKET (Part 5)
 RUBBER 80 HARDNESS
 Grade to suit service
STUDS (Part 6)
 STEEL to
 BS EN ISO898-1 PROPERTY CLASS 4.8
NUTS (Part 7)
 STEEL to
 BS4190 GRADE 4
WASHERS (Part 8)
 STAINLESS STEEL to
 BS1449:PART 2 GRADE 304S15
SPIGOT PIECE ASSEMBLY (Part 9)
SPIGOT PIPE (Part 10)
 SPIGOT PIPE MADE FROM TUBE
 STEEL TUBE to BS EN10255 or
 STEEL TUBE to
 BS EN10216-1 GRADE P265TRI
 SPIGOT PIPE MADE FROM FLAT BAR
 STEEL to
 BS EN10025-2 GRADE S275JR
SPIGOT FLANGE (Part 11)
 STEEL to
 BS EN10025-2 GRADE S275JR
TIE BOLT (Part 12)
 STEEL to
 BS EN10269+A1NAME 42CrMo4
NUTS (Part 13)
 STEEL to
 BS EN20898-2 PROPERTY CLASS 8.0
WASHERS (Part 14)
 STEEL to
 BS EN10269+A1NAME 42CrMo4

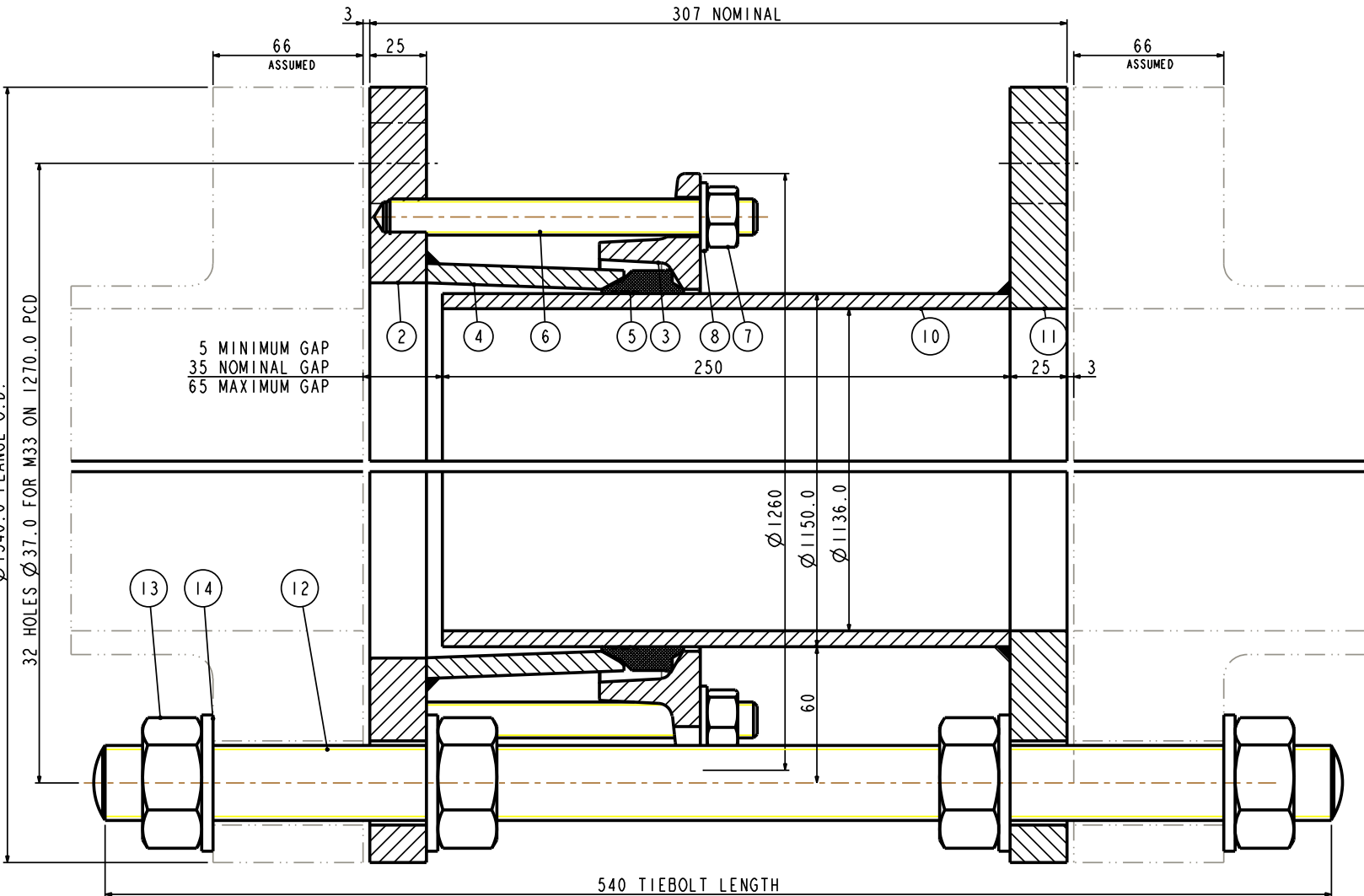
FINISH SPECIFICATION

NOTES

OVERALL DIMENSIONS DRAWING
 FOR REFERENCE ONLY
 VIKING JOHNSON RESERVE THE
 RIGHT TO AMEND DETAILS WITHOUT
 PRIOR NOTIFICATION

This drawing is the exclusive property of VIKING JOHNSON and is confidential and must not be reproduced or disclosed in a third party without written consent. It must be used only for the purpose which it has been issued and is returnable on request.

ISOMETRIC VIEW



FLANGE DRILLING	WORKING PRESSURE	TEST PRESSURE	GASKET	STUDS NO-SIZE	NO OF NOTCHES	TIE BOLTS NO-SIZE	WEIGHT KG	ASSEMBLY DRG NO
1100 PN10	10.0bar	15.0bar	J73LS	16-M16x160	8	8-M33x540	275.9Kg	10435_490

OVERALL DIMENSIONS OF
 DISMANTLING JOINT ASSEMBLY - YF2 SECTION
 ASSEMBLY - YF2 SECTION
 FOR 1100 PN10 FLANGE DRILLING

VIKING JOHNSON
 World leaders in pipe joints and repair products

DRAWN AUTO SCALE 1.000
 DATE 08/01/16 GENERIC 10435_YF2_UT

DRG NO SKPI350-1

RELEASE LEVEL: Concept

SHEET 1 OF 2

ALL PRODUCT DIMENSIONS ARE BEFORE COATING

REFERENCE DRAWING ONLY - NOT TO BE USED FOR INSPECTION PURPOSES

DO NOT SCALE

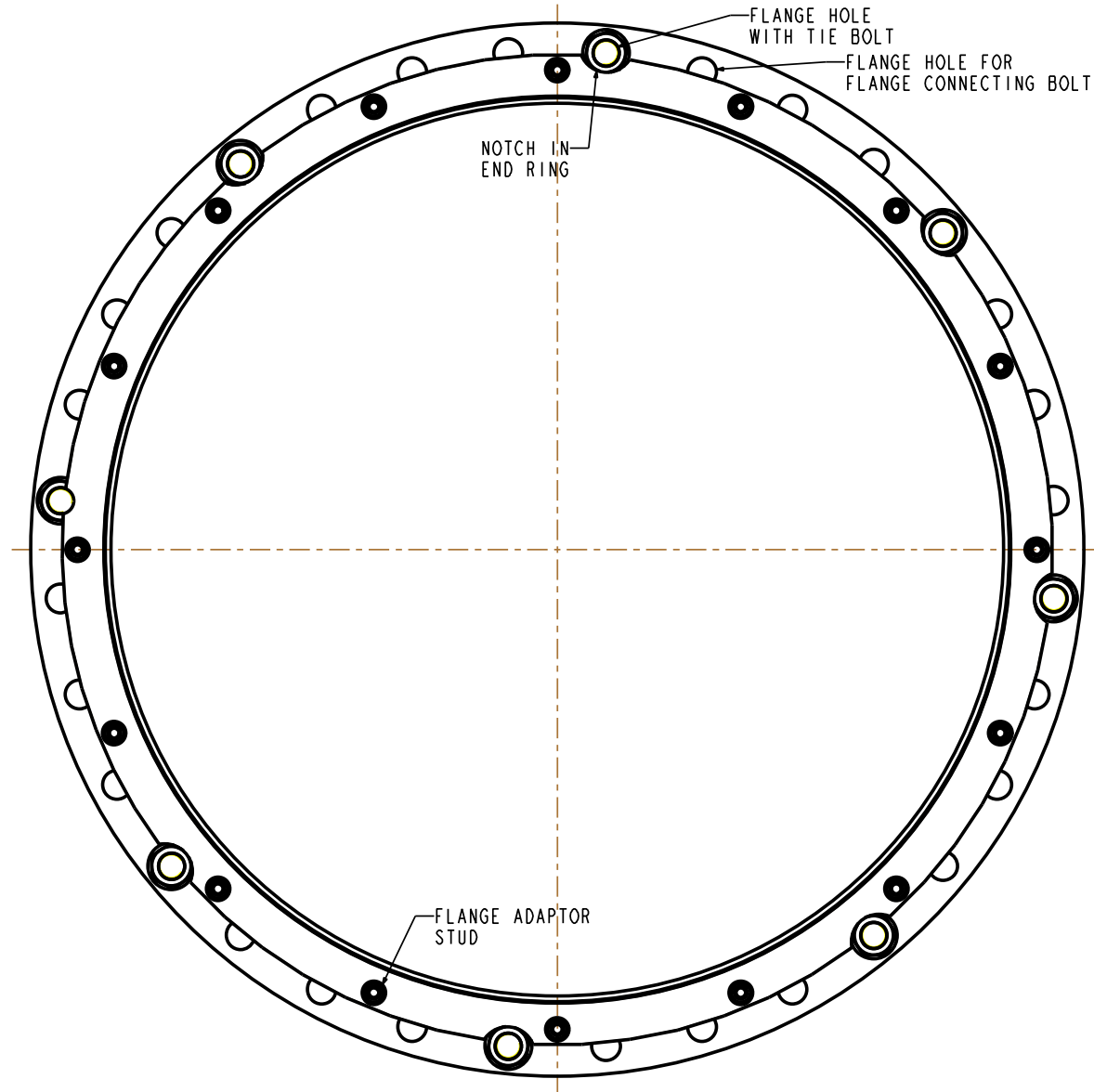
MATERIAL SPECIFICATION

FLANGE ADAPTOR ASSEMBLY (Part 1)
FLANGE (Part 2)
STEEL to
BS EN10025-2 GRADE S275JR
END RING (Part 3)
STEEL to
BS EN10025-2 GRADE S275JR
CENTRE SLEEVE (Part 4)
STEEL to
BS EN10025-2 GRADE S275JR
GASKET (Part 5)
RUBBER 80 HARDNESS
Grade to suit service
STUDS (Part 6)
STEEL to
BS EN ISO898-1 PROPERTY CLASS 4.8
NUTS (Part 7)
STEEL to
BS4190 GRADE 4
WASHERS (Part 8)
STAINLESS STEEL to
BS1449:PART 2 GRADE 304S15
SPIGOT PIECE ASSEMBLY (Part 9)
SPIGOT PIPE (Part 10)
SPIGOT PIPE MADE FROM TUBE
STEEL TUBE to BS EN10255 or
STEEL TUBE to
BS EN10216-1 GRADE P265TRI
SPIGOT PIPE MADE FROM FLAT BAR
STEEL to
BS EN10025-2 GRADE S275JR
SPIGOT FLANGE (Part 11)
STEEL to
BS EN10025-2 GRADE S275JR
TIE BOLT (Part 12)
STEEL to
BS EN10269+A1NAME 42CrMo4
NUTS (Part 13)
STEEL to
BS EN20898-2 PROPERTY CLASS 8.0
WASHERS (Part 14)
STEEL to
BS EN10269+A1NAME 42CrMo4

FINISH SPECIFICATION

NOTES

ISOMETRIC VIEW



OVERALL DIMENSIONS DRAWING
FOR REFERENCE ONLY
VIKING JOHNSON RESERVE THE
RIGHT TO AMEND DETAILS WITHOUT
PRIOR NOTIFICATION

This drawing is the exclusive property of VIKING JOHNSON and
is confidential and must not be reproduced or disclosed in a third
party without written consent. It must be used only for the
purpose which it has been issued and is returnable on request.

CRANE A Crane Co Company

TIE BOLT SPACING FOR
DISMANTLING JOINT ASSEMBLY - YF2 SECTION
ASSEMBLY - YF2 SECTION
FOR 1100 PN10 FLANGE DRILLING

RELEASE LEVEL: Concept

SHEET 2 OF 2



DRAWN	AUTO	SCALE	1.000
DATE	08/01/16	GENERIC	10435_YF2_UT

DRG NO SKPI350-1