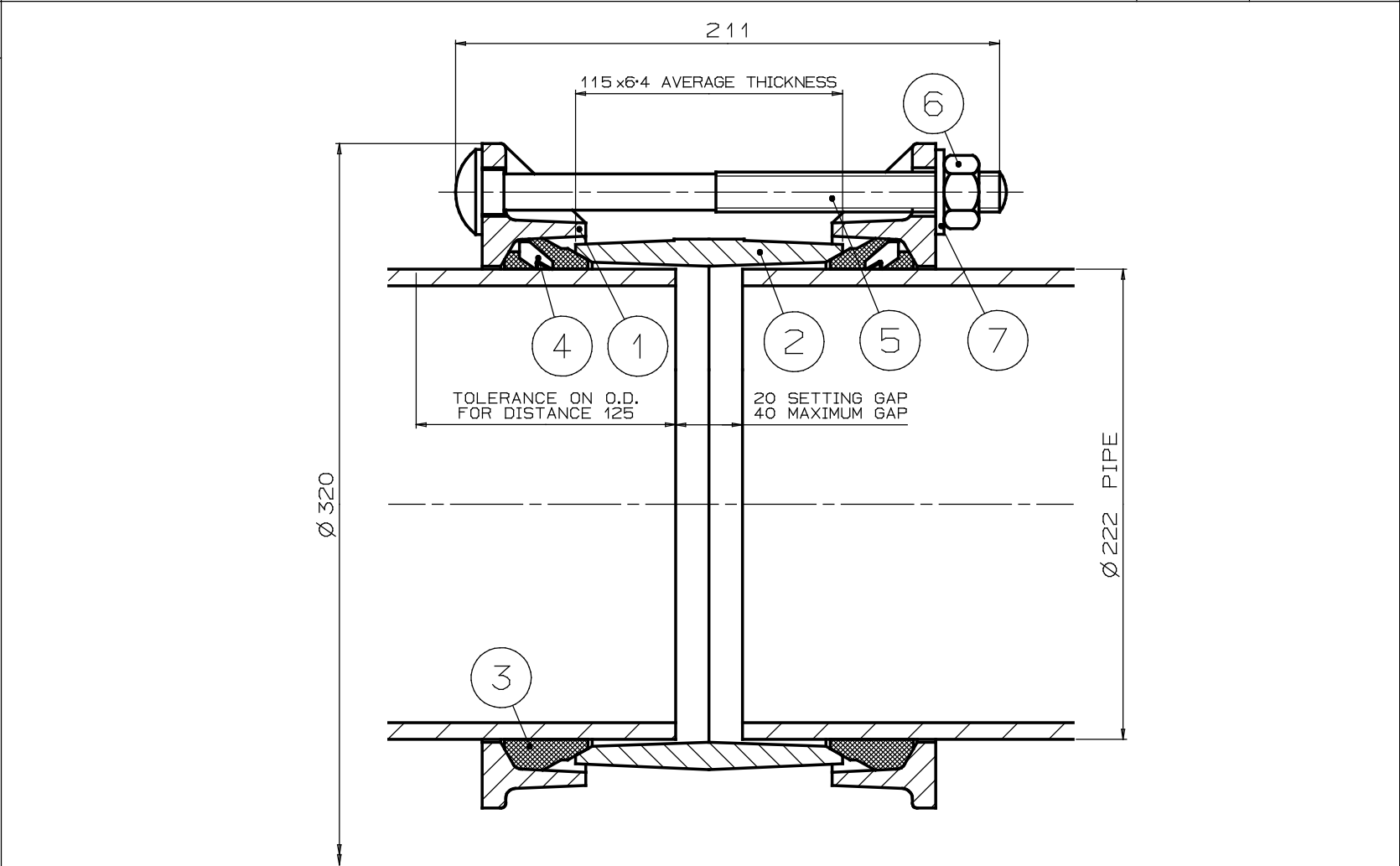


MATERIAL SPECIFICATION		
END RING (Part 1)		
Ductile Iron to BS EN1563		
SYMBOL EN-GJS-450-10		
CENTRE SLEEVE (Part 2)		
Ductile Iron to BS EN1563		
SYMBOL EN-GJS-450-10		
GASKET (Part 3)		
70 & 80 IRHD EPDM to BS EN681-1 or		
70 & 80 IRHD Nitrile to BS2494		
INSERT (Part 4)		
Stainless Steel to BS3146		
Grade ANC2		
BOLT (Part 5)		
Steel to BS EN ISO898-1		
Property Class 4.8		
NUT (Part 6)		
Steel to BS EN29898-2		
Grade 4.0		
WASHER (Part 7)		
Stainless Steel to BS1449:Part 2		
Grade 304S15		
7	WASHER	6
6	NUT	6
5	BOLT	6
4	INSERT	24
3	GASKET	2
2	CENTRE SLEEVE	1
1	END RING	2
PART	DESCRIPTION	NO OFF
LIST OF PARTS		



PIPE O.D.	TOLERANCE ON O.D.	BOLTS	GASKET MOULD	INSERT	WEIGHT KG	PRESSURE (bar)		ASSEMBLY DRG NO
		No-ØxLEN		NOxTYPE		WORKING	TEST	
222	+2.4 -3.5	6-M16x200	1631	12 x E	12.7	16	24	7935/4

OVERALL DIMENSIONS FOR
REFERENCE ONLY

VIKING JOHNSON RESERVE THE
RIGHT TO AMEND DETAILS
WITHOUT PRIOR NOTIFICATION

This drawing is the exclusive property of VIKING JOHNSON and
is confidential and must not be reproduced or disclosed to a third
party without written consent. It must be used only for the
purpose which it has been issued and is returnable on request.

CRANE A Crane Co Company

TITLE

OVERALL DIMENSIONS OF
FLEXLOCK COUPLING FOR
FOR 222mm O.D. PIPE

VIKING JOHNSON
World leaders in pipe joint's and repair products

DRAWN	CAD	DATE	5:1:06
SCALE	N.T.S.	P.N.	APPROVED
CHECKED			

DRG NO. SKC25507-1

ISSUE
B