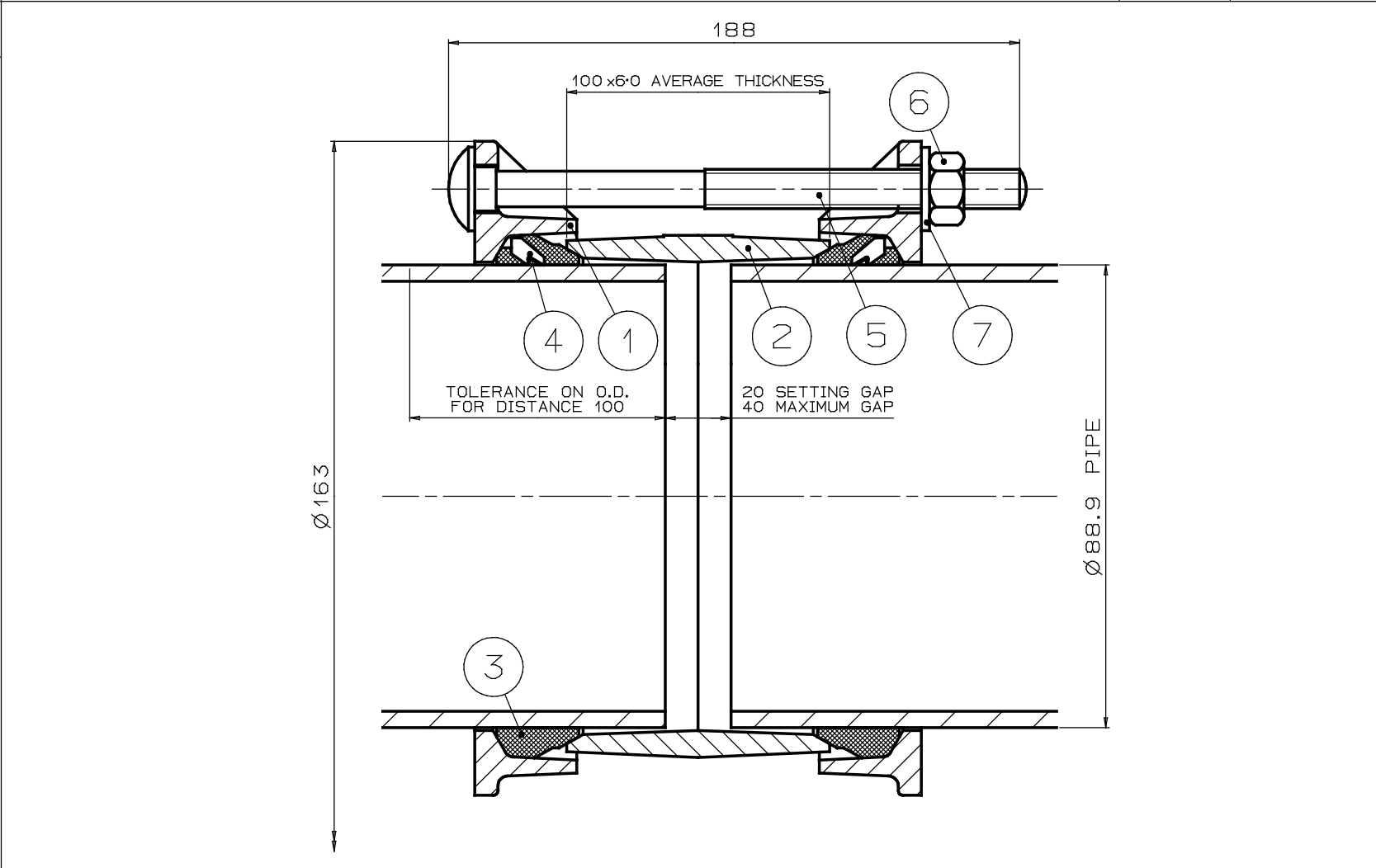



--	--	--

MATERIAL SPECIFICATION		
END RING (Part 1)		
Ductile Iron to BS EN1563		
SYMBOL EN-GJS-450-10		
CENTRE SLEEVE (Part 2)		
Ductile Iron to BS EN1563		
SYMBOL EN-GJS-450-10		
GASKET (Part 3)		
70 & 80 IRHD EPDM to BS EN681-1 or		
70 & 80 IRHD Nitrile to BS2494		
INSERT (Part 4)		
Stainless Steel to BS3146		
Grade ANC2		
BOLT (Part 5)		
Steel to BS EN ISO898-1		
Property Class 4.8		
NUT (Part 6)		
Steel to BS EN29898-2		
Grade 8.0		
WASHER (Part 7)		
Stainless Steel to BS1449:Part 2		
Grade 304S15		

7	WASHER	4
6	NUT	4
5	BOLT	4
4	INSERT	8
3	GASKET	2
2	CENTRE SLEEVE	1
1	END RING	2
PART	DESCRIPTION	NO OFF
LIST OF PARTS		



PIPE O.D.	TOLERANCE ON O.D.	BOLTS No-ØxLEN	GASKET MOULD	INSERT NOxTYPE	WEIGHT KG	PRESSURE (bar) WORKING	TEST	ASSEMBLY DRG NO
88.9	±0.8	4-M12x180	1382	4 x C	4.2	16	24	7561/3

OVERALL DIMENSIONS FOR REFERENCE ONLY VIKING JOHNSON RESERVE THE RIGHT TO AMEND DETAILS WITHOUT PRIOR NOTIFICATION		TITLE OVERALL DIMENSIONS OF FLEXLOCK COUPLING FOR FOR 88.9mm O.D. PIPE		<div>VIKING JOHNSON <i>World leaders in pipe joint's and repair products</i></div>	
This drawing is the exclusive property of VIKING JOHNSON and is confidential and must not be reproduced or disclosed to a third party without written consent. It must be used only for the purpose which it has been issued and is returnable on request.		DRAWN		CAD	DATE 1:7:96
		SCALE N. T. S.		PJM c	APPROVED
		CHECKED			
<div>CRANE</div> A Crane Co Company				DRG NO. SKC 22074-1	
<div>©</div>				ISSUE B	