

MATERIAL SPECIFICATION

END RING (Part 1)
Steel to BS EN10025-2 Grade S275JR

CENTRE SLEEVE (Part 2)
Steel to BS EN10025-2 Grade S275JR

GASKET (Part 3)
80 IRHD Moulded Compound
Grade to suit service

BOLTS, NUTS & WASHERS (Part 4)
BOLTS
Steel to BS EN ISO898-1
Proprty Class 4.8

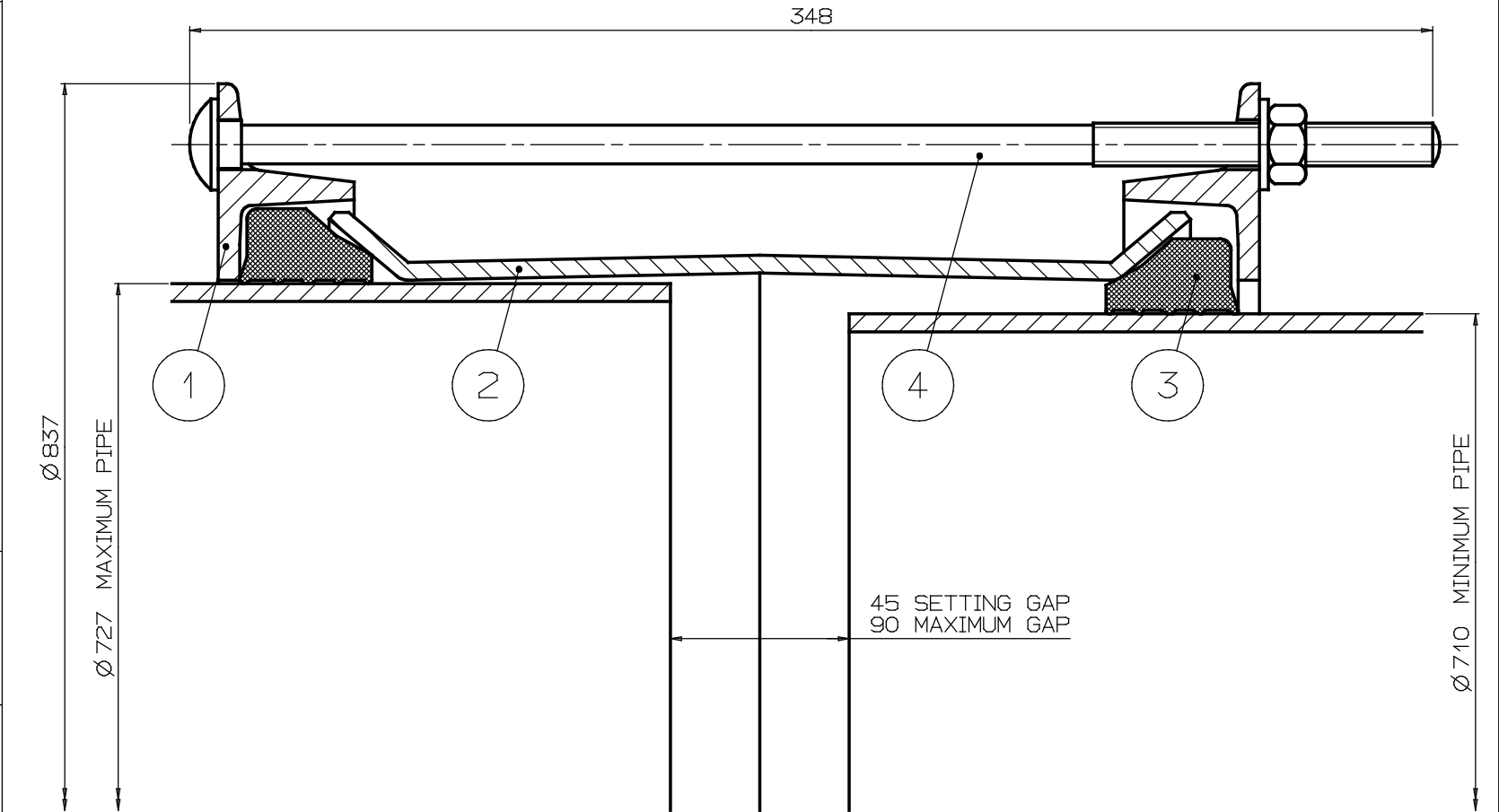
NUTS
Steel BS4190 GRADE 4

WASHERS
Stainless Steel BS1449:Part 2
Grade 304S15

FINISH SPECIFICATION

BOLT TORQUE

Torque to 54-65Nm or 40-50 lbf ft.




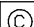
PIPE RANGE		GASKET MOULD	BOLTS NO-ØxLONG	WORKING PRESSURE	TEST PRESSURE	MAXI SECTION	WEIGHT KG	ASSEMBLY DRG NO
MIN	MAX							
710	727	6075	14-M12x340	16bar	24bar	MFMS ₅	57.7	10441/41

4	BOLTS, NUTS & WASHERS	1 4
3	GASKET	2
2	CENTRE SLEEVE	1
1	END RING	2
PART	DESCRIPTION	NO OFF
LIST OF PARTS		


OVERALL DIMENSIONS FOR
REFERENCE ONLY

VIKING JOHNSON RESERVE THE
RIGHT TO AMEND DETAILS
WITHOUT PRIOR NOTIFICATION

This drawing is the exclusive property of VIKING JOHNSON and
is confidential and must not be reproduced or disclosed to a third
party without written consent. It must be used only for the
purpose which it has been issued and is returnable on request.

 A Crane Co Company 

OVERALL DIMENSIONS OF
MAXIFIT COUPLING
710-727mm O.D. PIPES

 **VIKING JOHNSON**
World leaders in pipe joint's and repair products

DRAWN	CAD	DATE	19:9:05
SCALE	N.T.S.	P.N.	APPROVED
CHECKED			

DRG NO. SKC25441-1

ISSUE
B