

| ISSUE | ALTERATION | DATE & INITIAL | ATD NO |
|-------|---------------------------|----------------|--------|
| C | DRAWING SUFFIX RE-ORDERED | 2:6:15PN | |
| | | | |

SPECIFICATION DRAWING ONLY. NOT TO BE USED FOR INSPECTION PURPOSES.

ALL PRODUCT DIMENSIONS ARE BEFORE COATING



DO NOT SCALE

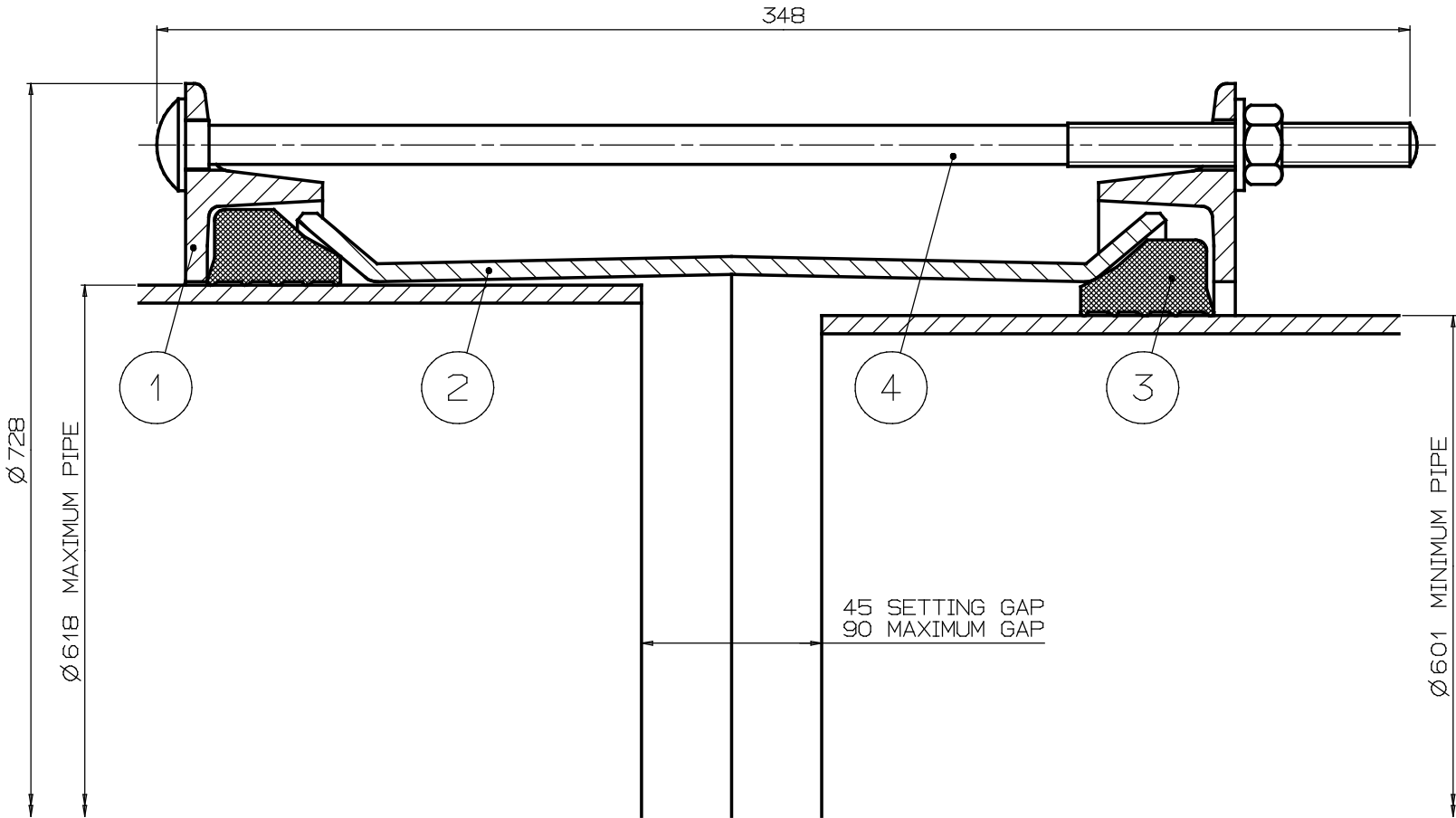
MATERIAL SPECIFICATION

- END RING (Part 1)
Steel to BS EN10025-2 Grade S275JR
- CENTRE SLEEVE (Part 2)
Steel to BS EN10025-2 Grade S275JR
- GASKET (Part 3)
80 IRHD Moulded Compound
Grade to suit service
- BOLTS, NUTS & WASHERS (Part 4)
BOLTS
Steel to BS EN ISO898-1
Proprty Class 4.8
NUTS
Steel BS4190 GRADE 4
WASHERS
Stainless Steel BS1449:Part 2
Grade 304S15

FINISH SPECIFICATION

BOLT TORQUE

Torque to 54-65Nm or 40-50 lbf ft.



| PIPE RANGE | | GASKET MOULD | BOLTS NO-ØxLONG | WORKING PRESSURE | TEST PRESSURE | MAXI SECTION | WEIGHT KG | ASSEMBLY DRG NO |
|------------|-----|-----------------|--------------------|---------------------|------------------|-------------------|--------------|--------------------|
| MIN | MAX | | | | | | | |
| 601 | 618 | 6020 | 12-M12x340 | 16bar | 24bar | MFMS ₅ | 49.4 | 10441/20 |

| 4 | BOLTS, NUTS & WASHERS | 12 |
|---------------|-----------------------|--------|
| 3 | GASKET | 2 |
| 2 | CENTRE SLEEVE | 1 |
| 1 | END RING | 2 |
| PART | DESCRIPTION | NO OFF |
| LIST OF PARTS | | |

OVERALL DIMENSIONS FOR
REFERENCE ONLY

VIKING JOHNSON RESERVE THE
RIGHT TO AMEND DETAILS
WITHOUT PRIOR NOTIFICATION

This drawing is the exclusive property of VIKING JOHNSON and
is confidential and must not be reproduced or disclosed to a third
party without written consent. It must be used only for the
purpose which it has been issued and is returnable on request.



A Crane Co Company



OVERALL DIMENSIONS OF
MAXIFIT COUPLING
601-618mm O.D. PIPES



VIKING JOHNSON
World leaders in pipe joint's and repair products

| | | | |
|--------------------|--------|------|------------|
| DRAWN | CAD | DATE | 19:6:97 |
| SCALE | N.T.S. | P.N. | APPROVED |
| CHECKED | | | |
| DRG NO. SKC22740-1 | | | ISSUE C |