

ALL PRODUCT DIMENSIONS ARE BEFORE COATING

REFERENCE DRAWING ONLY - NOT TO BE USED FOR INSPECTION PURPOSES

DO NOT SCALE

MATERIAL SPECIFICATION

END RING (Part 1)
STEEL to
BS EN10025-2:2004 GRADE S275JR
CENTRE SLEEVE (Part 2)
STEEL to
BS EN10025-2:2004 GRADE S275JR
GASKET (Part 3)
RUBBER 80 HARDNESS
Grade to suit service
BOLTS (Part 4)
STEEL BS EN ISO898-1:1999
PROPERTY CLASS 4.8
NUTS (Part 5)
STEEL BS4190:2001
GRADE 4
WASHERS (Part 6)
STAINLESS STEEL BS1449:PART 2:1983
GRADE 304S15

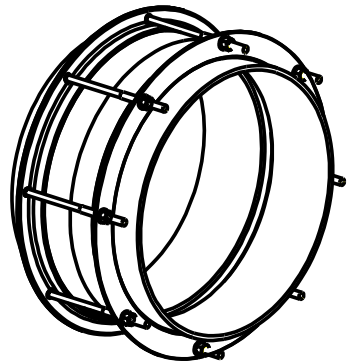
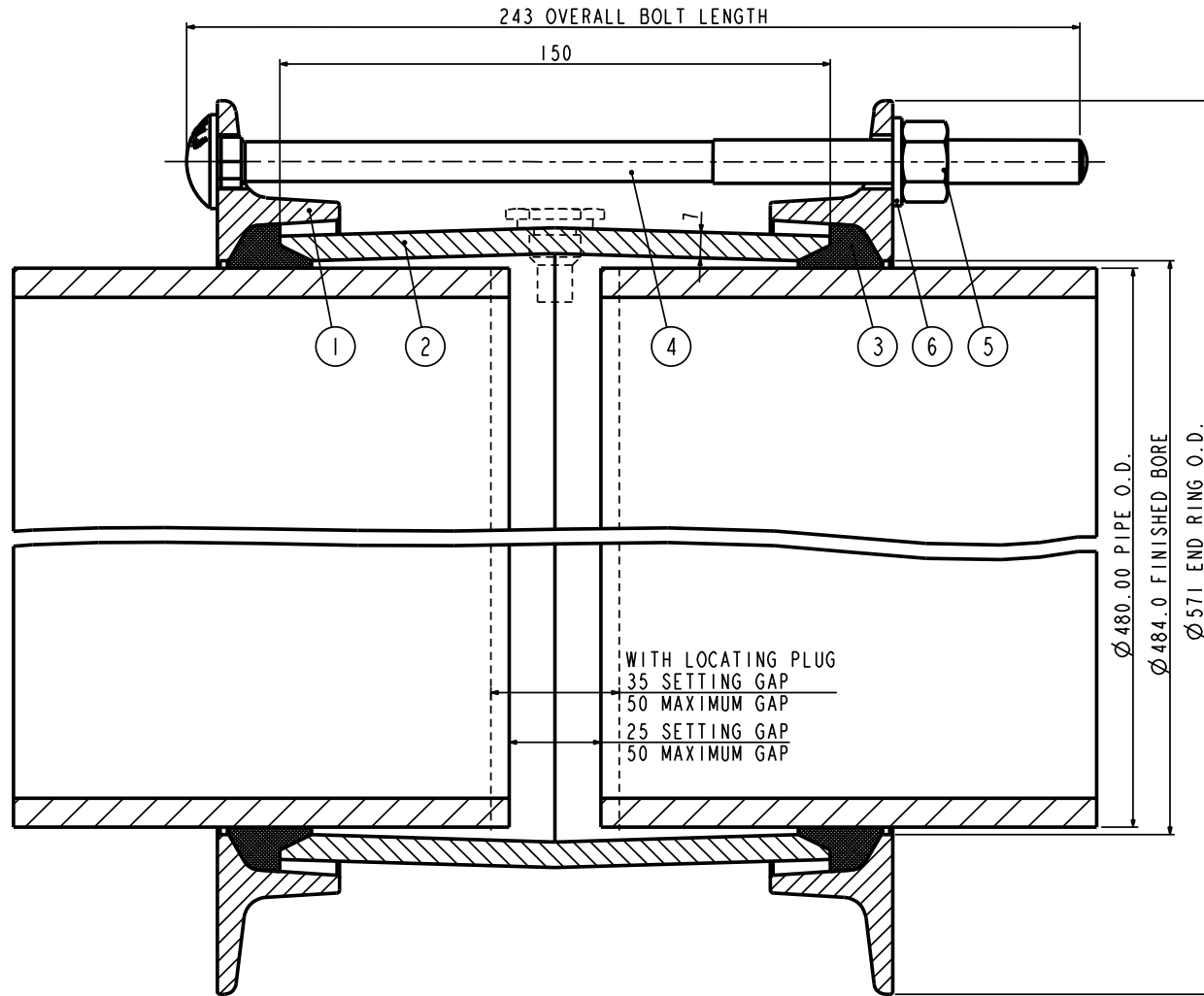
FINISH SPECIFICATION

NOTES

Locating Plugs/Pin Register.
If Locating Plugs/Pins are required,
3 Plugs/Pins are to be supplied.

BOLT TORQUE

Torque to 54-65Nm or 40-50 lbf ft



ISOMETRIC VIEW

PIPE O.D.	PIPE MATERIAL	PIPE TOLERANCE		BOLTS NO-SIZE	GASKET MOULD	WORKING PRESSURE	TEST PRESSURE	WEIGHT KG	ASSEMBLY DRG NO
		+	-						
480.00	DUCTILE IRON	2.90	4.00	8-M12x235	J56LS	23.1bar	34.7bar	26.0	7829_300

OVERALL DIMENSIONS DRAWING
FOR REFERENCE ONLY
VIKING JOHNSON RESERVE THE
RIGHT TO AMEND DETAILS WITHOUT
PRIOR NOTIFICATION

This drawing is the exclusive property of VIKING JOHNSON and is confidential and must not be reproduced or disclosed to a third party without written consent. It must be used only for the purpose which it has been issued and is returnable on request.

CRANE A Crane Co Company

OVERALL DIMENSIONS OF
VIKING JOHNSON COUPLING ASSEMBLY
'LO2' SECTION
FOR 480.00mm O.D. PIPE

RELEASE LEVEL: Manufacture

SHEET 1 OF 1

VIKING JOHNSON
World leaders in pipe joints and repair products

DRAWN	drawn_by	SCALE	N.T.S.
DATE	06/11/08	GENERIC	7829

DRG NO SKP95-1