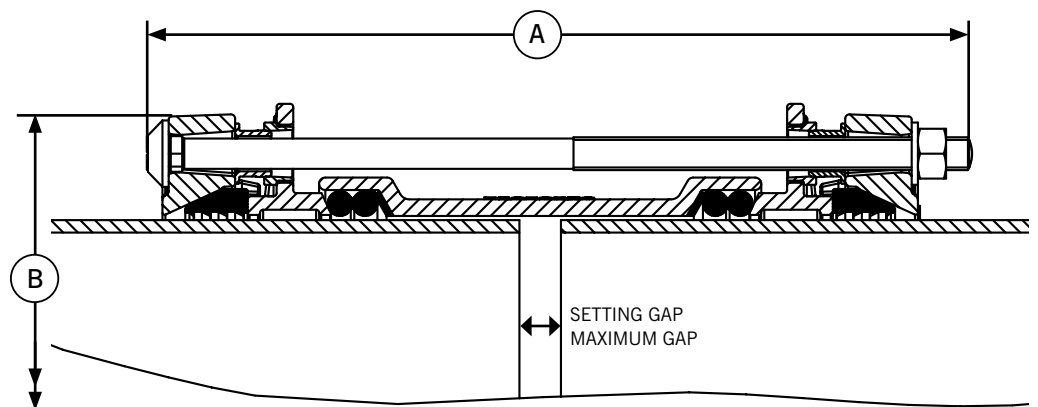


AquaFast Couplings

Specifications



Coupling

Pipe OD	Bolt Size No.-Dia x Length	Dimensions (mm)		Setting Gap (mm)	Max Gap (mm)	Weight (kg)
		A max	B dia			
63	2-M12 x 250	257	144	20	30	4.2
75	2-M12 x 250	257	156	20	30	4.7
90	2-M12 x 250	257	171	20	30	5.3
110	2-M12 x 250	257	192	20	30	6.4
125	2-M12 x 250	257	207	20	30	7.1
140	4-M12 x 250	257	221	20	30	8.4
160	4-M12 x 250	257	241	20	30	9.2
180	4-M12 x 375	382	272	30	50	18.0
200	4-M12 x 375	382	292	30	50	20.4
225	4-M16 x 385	395	328	30	50	24.8
250	6-M16 x 385	395	352	30	50	31.5
280	6-M16 x 385	395	382	30	50	33.6
315	6-M16 x 385	395	417	30	50	38.7

Materials & Relevant Standards

Centre Sleeve, End Ring and Flange Adaptor Body

Ductile iron to BS EN 1563 Symbol EN-GJS-450-10

Gripper Ring

Ductile iron to BS EN 1563 Symbol EN-GJS-450-10

Intermediate Ring

Ductile iron to BS EN 1563 Symbol EN-GJS-450-10

Bolts

BS EN ISO 898-1 Property class 8.8

Stainless Steel option - BS EN ISO3506-1 Grade A2

Property Class 70 (Stainless steel available as special order)

Nuts

Steel to BS EN20898-2 Property Class 8

Stainless Steel option - BS EN ISO3506-2 Grade A4

Property Class 80 (Stainless steel available as special order)

Washers

BS 1449:Part 2 Grade 304S15

Gasket (EPDM)

BS EN 681-1 Type WA/BS 6920 hardness to 70 IRHD

Resisters

Free cutting Mild Steel (Grade Y15) Zn3 Zinc coated

Coatings

Centre sleeve, end ring, flange adaptor body and intermediate ring:

Rilsan Nylon 11

Gripper: Cathaporetic coating

Bolts, nuts: Sheraplex to WIS 4-52-03

Pressure Rating

Working 16 bar

Test 24 bar

Approvals

All water contact materials approved for use with potable water by WRAS.

Every effort has been made to ensure that the information contained in this publication is accurate at the time of publishing. Crane Ltd assumes no responsibility or liability for typographical errors or omissions or for any misinterpretation of the information within the publication and reserves the right to change without notice.