

Specialist

Wall Couplings

The Perfect Through Wall Connection



PIPE CONNECTIONS, REPAIR & FLOW CONTROL PRODUCTS FOR THE UTILITIES INDUSTRY

CRANE

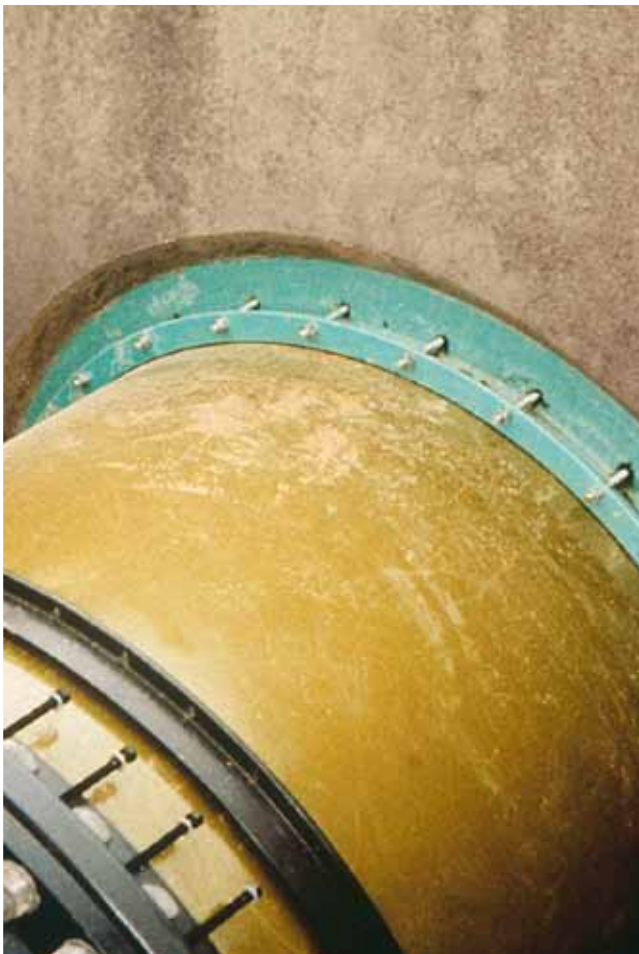
BUILDING SERVICES & UTILITIES



The Perfect Solution for Passing Pipes Through Walls

Old Practice

The normal procedure for passing pipes through walls is to leave a substantial cut-out in the wall during the original concrete pouring process. Later, the contractor will pass a 'puddle pipe' through the cut-out, and build an intricate 'letter-box' shutter around it. New concrete is then poured into the void to encapsulate the puddle pipe. Not only is this a time consuming process, but very often the puddle pipe moves with the pour and settles to a less than suitable alignment.



Easier Installation

By utilising a Viking Johnson wall coupling which is held rigidly between the shutters, the 'boxing out' process is eliminated. This means that pouring the wall is a simplified and is a single step process. It also guarantees that leak paths, which are inevitably set up when new concrete is poured onto old, are completely eliminated.

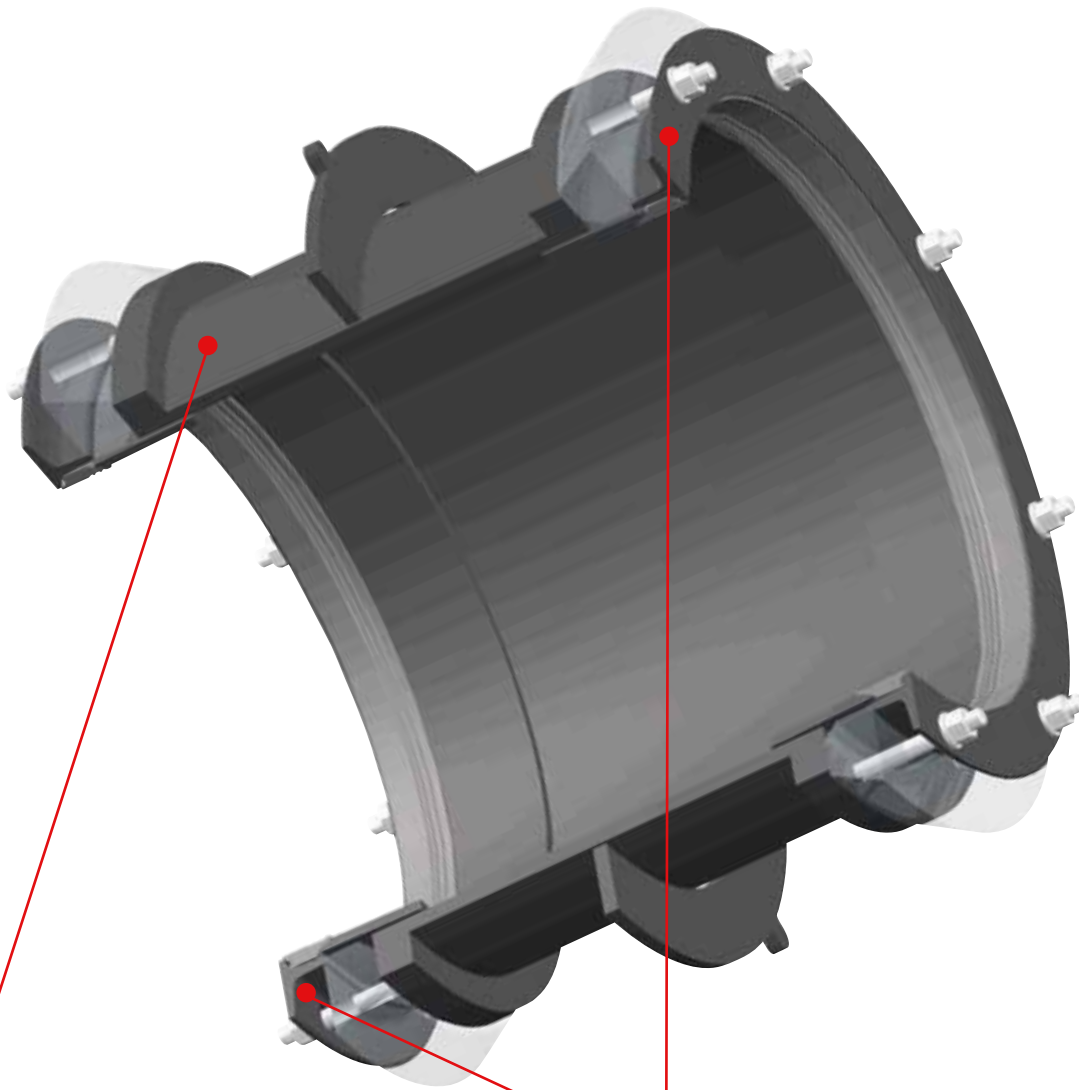
Using a standard Type 1 Viking Johnson wall coupling gives a versatile coupling either side of the wall where pipes can either be passed through or inserted into each side. This system allows for misalignment or angular deflection of up to 3° on each side of the wall. In addition, the use of a Viking Johnson wall coupling ensures that, on the outside of the structure, the first 'rocker' or settlement coupling is built into the shear face of the wall – exactly where it is required. It also means that only one further versatile coupling is needed to form the settlement 'rocker' instead of two. Consequently the installed cost can be drastically reduced, particularly where a large number of through the wall joints appear on a building, for instance in a gravity treatment works.

Approvals

All products are designed and manufactured under quality management systems certified to ISO 9001 and conform to the American Water Works Association's specification AWWA/ANSI C219 for bolted couplings.

Wall Couplings - Type 1

Product Design Benefits



■ Corrosion Protection

Metal components are coated with Rilsan Nylon 11 which is WRAS approved for use with potable water and offers a long term protection to corrosion, impact and abrasion to ensures continued reliable performance.

■ Flexible Fit

Using a standard Type 1 Viking Johnson wall coupling gives a flexible coupling either side of the wall where pipes can either be passed through or inserted into each side. This allows for slight misalignment or angular deflection on each side of the wall.

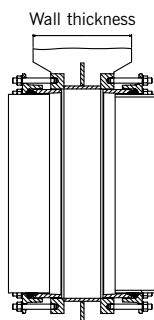
Customer Benefits

- Straightforward for Civil Contractor to position the pipe.
- Easy to secure and prevent movement of the pipe work.
- Large formwork panels can be reused as there is no need to make holes in the shuttering.
- No need for a contractor to come back and cast in pipes or 'make good' the wall surface after casting pipes.
- Ensures good bond between wall and pipe.
- Installed cost can be drastically reduced particularly where a large number of through the wall joints appear on a structure e.g. in a gravity treatment works.

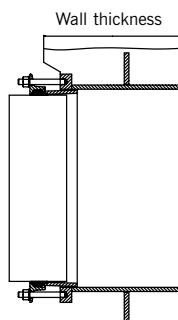
Wall Couplings

Specifications

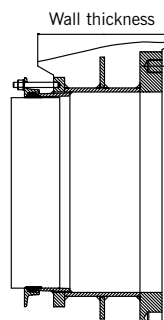
The Viking Johnson Wall Coupling is available in nine variations:



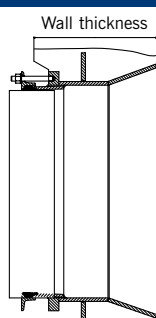
Type 1 Coupling/Coupling



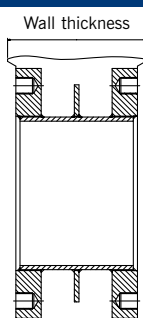
Type 2 Coupling/Plain End



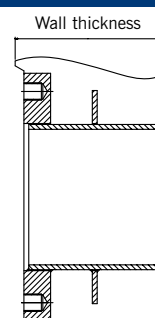
Type 3 Coupling/Flange



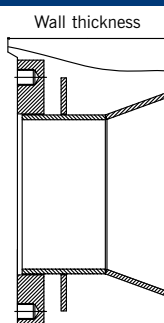
Type 4 Coupling/Bellmouth



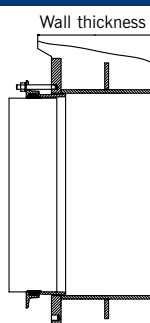
Type 5 Flange/Flange



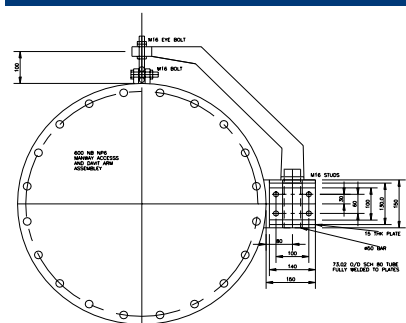
Type 6 Flange/Plain End



Type 7 Flange/Bellmouth



Type 8 Harnessing



Type 9 Man Entry

Viking Johnson wall couplings are patented products - UK Patent No. 2263323B, US Patent No.5505499.

Materials & Relevant Standards

Viking Johnson strongly recommends the user ensures that the wall is structurally capable of withstanding the resultant forces induced by the system working pressure and any other related influences.

The materials of construction vary according to size and wall coupling type, with the following being those typically used in their manufacture:

Body/Centre Sleeve/End Ring:

DN80 to DN300

Carbon steel to BS EN 10025:2004

Ductile iron to BS EN 1563:1997

DN350 to DN1800

Carbon steel to BS EN 10025:2004

Bolts/Nuts/Washer:

Tee Bolts or Stud - BS EN ISO 898-1:2009 Property Class 4.8

Washers - BS 1449: PT2:1983:Grade 304515

Gasket

Standard gaskets - EPDM to BS EN 681 Part 1 Type WA for water and sewage applications, with an operating temperature range of -40°C to +90°C.

Product coating

Wall coupling bodies and end rings: coated in black Rilsan Nylon 11.

Optional, Scotchkote 206N fusion bonded epoxy.

Studs, 'T' bolts and nuts: either zinc plated to BS EN 12329:2000 followed by Rilsan Nylon 11 for double protection against corrosion or Sheraplex coated to WIS 4-52-03.

Water contact materials

All water contact materials are WRAS listed for use with potable water.

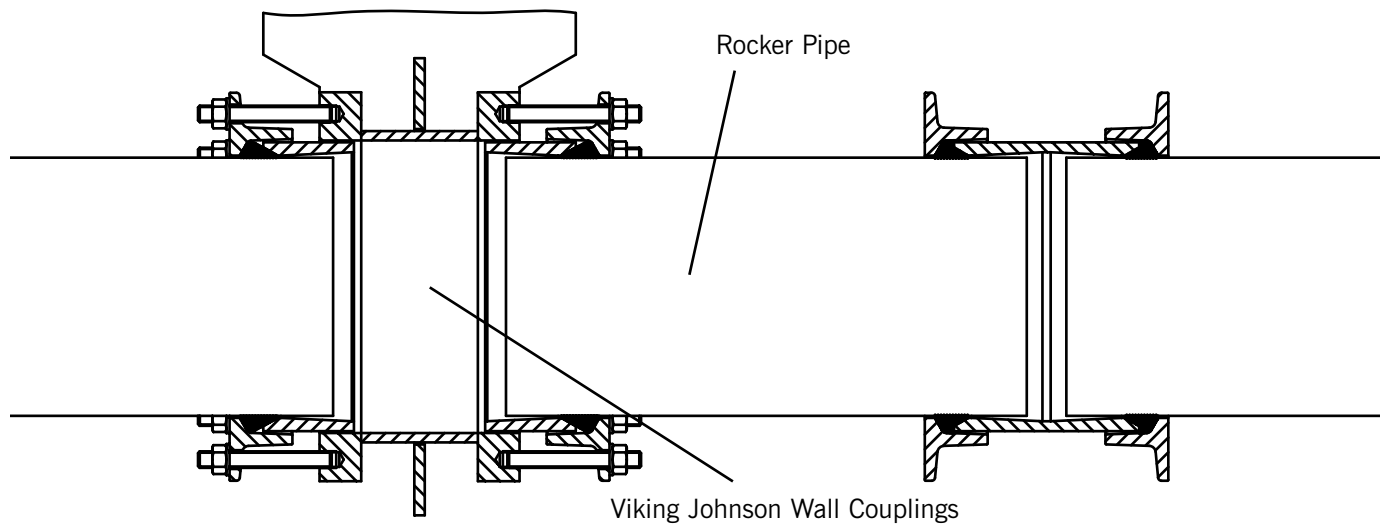
Every effort has been made to ensure that the information contained in this publication is accurate at the time of publishing. Crane Ltd assumes no responsibility or liability for typographical errors or omissions or for any misinterpretation of the information within the publication and reserves the right to change without notice.

Wall Couplings

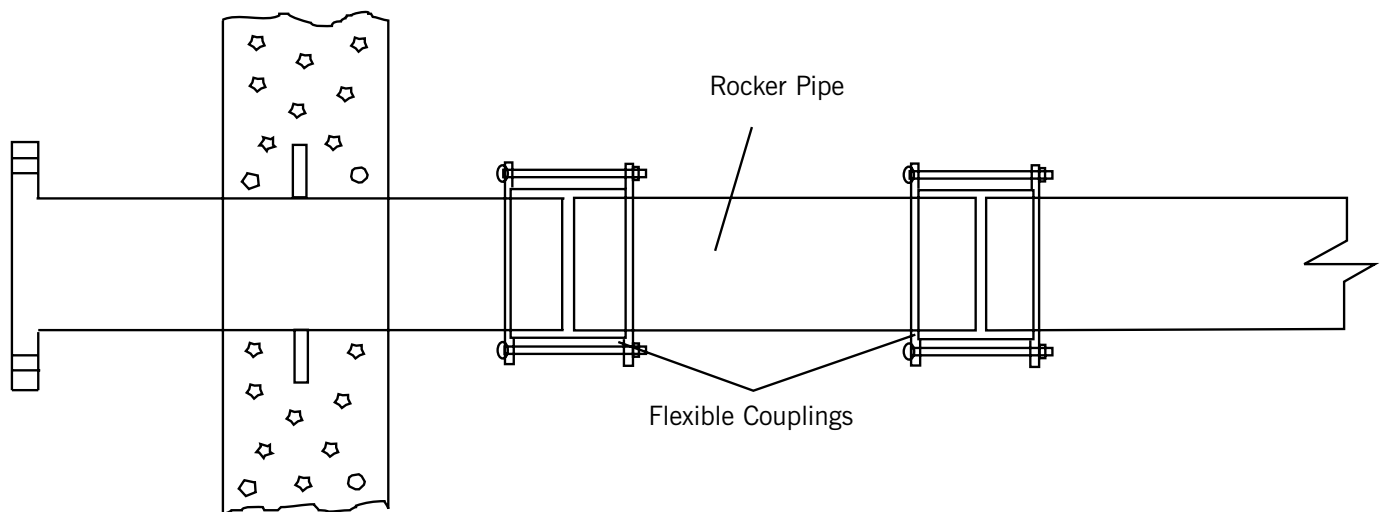
Specifications

Typical Installations

Wall Coupling Method



Conventional Method



Wall Couplings Check List

Wall Couplings are a bespoke product and Viking Johnson requires the following information to assist with the quotation process. This page can be copied from the brochure or a form is available on the website or directly from the Marketing Department.

Please fax back to: +44 (0)1462 443311 or email to: info@vikingjohnson.com

Company Name		Date	
Contact Name		Email	
Customer Address			
	Telephone		
	Fax		
	Quantity		
	Delivery Date		
Customer Reference No.		Fab No.	

Specifications

Nominal Diameter												
Quantity												
1st End (Please Tick)	Man Entry	<input type="checkbox"/>	Coupling	<input type="checkbox"/>	Flanged	<input type="checkbox"/>	Plain End	<input type="checkbox"/>	Bellmouth	<input type="checkbox"/>	Harness	<input type="checkbox"/>
2nd End (Please Tick)	Man Entry	<input type="checkbox"/>	Coupling	<input type="checkbox"/>	Flanged	<input type="checkbox"/>	Plain End	<input type="checkbox"/>	Bellmouth	<input type="checkbox"/>	Harness	<input type="checkbox"/>
Wall Thickness												
Actual OD of Pipe												
Pipe Material (Please Tick)	Carbon Steel	<input type="checkbox"/>	Stainless Steel	<input type="checkbox"/>	D.I.	<input type="checkbox"/>	G.R.P	<input type="checkbox"/>	Concrete	<input type="checkbox"/>	PVC-U	<input type="checkbox"/>
Other please specify												
Fluid Flowing												
If Flanged, Flange Details												
If Harnessed - Stud Details (Please Tick)	No.	<input type="checkbox"/>	Diameter	<input type="checkbox"/>								
Working Pressure					Puddle Flange (Please Tick)	Yes	<input type="checkbox"/>	No	<input type="checkbox"/>			
Any Other Details												



To visit our Video Library go to:
<http://www.youtube.com/user/CraneBSU>



46-48 WILBURY WAY
HITCHIN, HERTFORDSHIRE
SG4 0UD. UNITED KINGDOM

TELEPHONE: +44 (0)1462 443322

FAX: +44 (0)1462 443311

EMAIL: info@vikingjohnson.com

www.vikingjohnson.com



ISO 14001 • EMS 51874



ISO 9001 • FM 00311



Visit www.flowoffluids.com
to order your copy of the
New Technical Paper 410.

- Designed and manufactured under quality management systems in accordance with BS EN ISO 9001.
- Environmental Management System accredited to ISO 14001.
- For full terms and conditions, please visit our website.

Every effort has been made to ensure that the information contained in this publication is accurate at the time of publishing. Crane Ltd assumes no responsibility or liability for typographical errors or omissions or for any misinterpretation of the information within the publication and reserves the right to change without notice.

DR7260_02_2014

CRANE

BUILDING SERVICES & UTILITIES

www.cranesbu.com