

Universal

MaxiFit

Wide Tolerance Range

Mechanical Pipe Fitting Technology

NOW
INCLUDES
MaxiFit
Plus



PIONEERS IN PIPE SOLUTIONS

CRANE

BUILDING SERVICES & UTILITIES



A Versatile Solution for Pipe Jointing

MaxiFit universal pipe couplings are designed to accommodate plain ended pipes with different outside diameters. One fitting is able to connect a wide variety of pipe materials including steel, ductile iron, PVC, cast iron, GRP and asbestos cement pipes amongst others. The range includes the following product lines

- MaxiFit Plus – DN50 – DN150
- MaxiFit small diameter – DN40 – DN300
- MaxiFit large diameter – DN350 – DN700

The MaxiFit range is designed and manufactured under quality management systems to BS EN ISO 9001 and meets the requirements of the UK Water Regulations & BS EN 14525, with DN40 to DN300 being independently tested by BSI to verify conformance to this standard.

Wide Tolerance

With up to 34mm tolerance on the pipe OD it not only eases installation but can reduce the need for expensive and time consuming trial holes, reduce stock holding and increase stock turn over. MaxiFit is an adaptable and economic solution to most pipe connections.

All products in the range have a test pressure of 24bar on water (9bar on gas) and are suitable for 16bar working pressure for water (6bar on gas).

Extensive Range

The expansive range is available in sizes DN40 up to DN700 and includes MaxiFit couplings & MaxiFit Xtra long sleeved couplings, MaxiStep reducing couplings, MaxiDaptor flange adaptors, MaxiCap, MaxiThread End Cap, & MaxiFit Large Diameter couplings & flange adaptors. New to range is MaxiFit Plus couplings and flange adaptors.

Quick & Efficient Installation

The versatile range is pre-assembled with an innovative gasket which has 'slide easy' ribs that reduce friction on pipes at the upper tolerance range of the fitting, providing maximum sealing pressure, even on scored, pitted and corroded pipe surfaces. The captive non-rotating bolt heads require just a single spanner to install with just one standard bolt torque across the range. The MaxiFit Plus range offers better access to bolts when installing, even in narrow and congested trench conditions.



MaxiFit Coupling
 MaxiThread
 Large Diameter MaxiFit Coupling
 Large Diameter MaxiDaptor
 MaxiStep
 MaxiDaptor
 MaxiFit Plus Flange Adaptor
 MaxiFit Plus Coupling

| Pipe Materials | | |
|----------------|-----------------|-----------------|
| Ductile Iron | Cast Iron | Concrete |
| Steel | Stainless Steel | Asbestos Cement |
| PVC | HEP30 | Copper |
| GRP | ABS | |

MaxiFit can also be used as a repair product - see Maxifit Repair Brochure

MaxiFit *Plus* Range

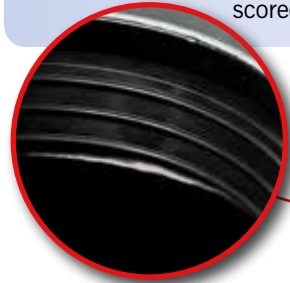
Product Design Benefits

Optimised Gasket Design

A unique gasket with distinctive circumferential ribs provides a 'slide easy' fit for maximum sealing on scored, corroded or pitted pipe.

Excellent Corrosion & Damage Resistance

Coated in black Rilsan Nylon 11 which is WRAS listed and has excellent resistance to impact, abrasion, weathering and chemicals. It also has good thermal stability and flexibility to accommodate for rough site handling.

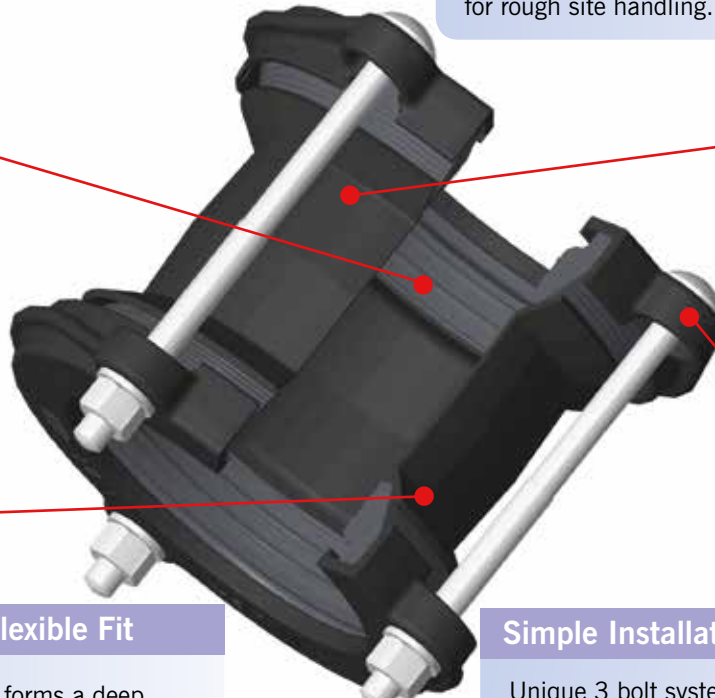


Flexible Fit

Flared end to the sleeve forms a deep gasket chamber to give maximum possible pipe adjustment.

Simple Installation

Unique 3 bolt system for quicker and easier installation even in a narrow trench by using readily available hand tools.



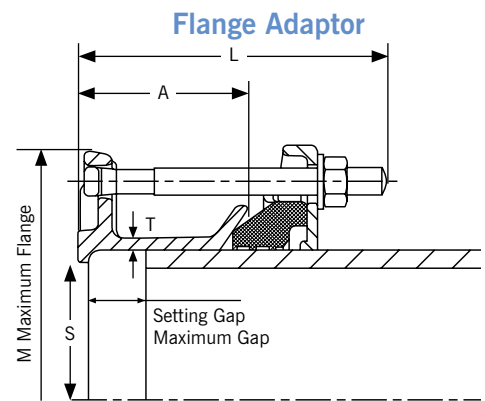
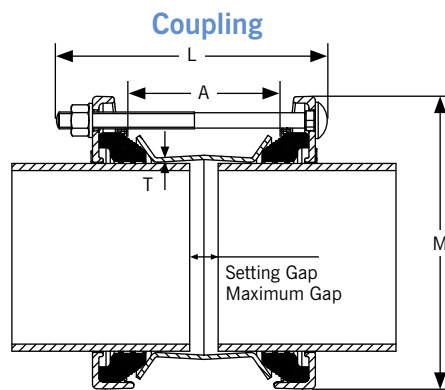
Customer Benefits

- ▶ Unique three bolt design that allows quicker installation thereby reducing trench risk, available in sizes DN65, DN80 and DN100
- ▶ MaxiFit Plus offers better leverage for torque
- ▶ Better access to bolts especially when installing in narrow or harsh trench conditions
- ▶ Design life expectancy of 50 years, established by rigorous 'Accelerated Age Testing' which subjects product to working pressure at 80°C for 1000 hours
- ▶ Lighter product for easier handling, storage and shipping, thereby reducing costs. MaxiFit Plus available in sizes DN50 to DN150
- ▶ Wide tolerance permits lower stock holding
- ▶ All models accommodate angularity between pipes, allowing for normal pipeline movement caused by ground settlement*

Note:
*Angularity - Couplings and reducing couplings: offer a maximum of 6° degrees total angular deflection. Flange Adaptors: offer a maximum of 3° degrees total angular deflection; these figures are calculated when using the product on maximum pipe outside diameters. Larger degrees of angular deflection are achievable when product is fitted on smaller pipe outside diameters.

MaxiFit Plus DN50 – DN150

Specifications



MaxiFit Plus Couplings & End Caps

| Nominal Size (mm) | Size Range (mm) | | Diameter (mm) M | Overall Length (mm) L | Sleeve Length x Thickness (A) x (T) | Sleeve | Setting Gap (mm) | | Bolts No-Dia X Length | Gasket Mould | Weight Kg | MaxiCap Available |
|-------------------|-----------------|-----|-----------------|-----------------------|-------------------------------------|--------------|------------------|-----|-----------------------|--------------|-----------|-------------------|
| | Min | Max | | | | | Min | Max | | | | |
| DN50 | 57 | 74 | 154.5 | 190 | 95 x 3 | Steel | 20 | 40 | 4-M12x180 | 12392/1 | 2.7 | ✓ |
| DN65 | 63 | 85 | 173.5 | 190 | 95 x 4.5 | Ductile Iron | 20 | 40 | 3-M12x180 | 12392/2 | 3.6 | ✓ |
| DN65 | 63 | 85 | 173.5 | 190 | 95 x 3 | Steel | 20 | 40 | 3-M12x180 | 12392/2 | 3.2 | ✓ |
| DN80 | 85 | 107 | 195.5 | 190 | 95 x 4.5 | Ductile Iron | 20 | 40 | 3-M12x180 | 12392/3 | 4.1 | ✓ |
| DN80 | 85 | 107 | 195.5 | 190 | 95 x 3 | Steel | 20 | 40 | 3-M12x180 | 12392/3 | 3.7 | ✓ |
| DN100 | 107 | 132 | 224.5 | 190 | 95 x 4.5 | Ductile Iron | 20 | 40 | 3-M12x180 | 12392/4 | 5.0 | ✓ |
| DN100 | 107 | 132 | 224.5 | 190 | 95 x 3 | Steel | 20 | 40 | 3-M12x180 | 12392/4 | 4.5 | ✓ |
| DN125 | 132 | 158 | 254.5 | 190 | 95 x 3 | Steel | 20 | 40 | 4-M12x180 | 12392/6 | 5.2 | ✓ |
| DN150 | 158 | 184 | 280.5 | 190 | 95 x 3 | Steel | 20 | 40 | 4-M12x180 | 12392/7 | 6 | ✓ |

MaxiFit Plus Flange Adaptors

| Nominal Size (mm) | Size Range (mm) | | Diameter (mm) M | Bore (mm) S | Overall Length (mm) L | Sleeve Length x Thickness (A) x (T) | Flange Drilling | Setting Gap (mm) | | Bolts No-Dia X Length | Gasket Mould | Weight Kg |
|-------------------|-----------------|-----|-----------------|-------------|-----------------------|-------------------------------------|---|------------------|-----|-----------------------|--------------|-----------|
| | Min | Max | | | | | | Min | Max | | | |
| DN65 | 63 | 85 | 196.9 | 75 | 124 | 75 x 5 | 60 PN10:16, 65 PN10:16, 80 PN10:16, 3" BS10 Table ADE, 2.5" ANSI125, 3" ANSI125, 80 AS2129 CD, 80 AS4087 16 | 20 | 40 | 3-M12 x 115 | 12392/2 | 3.6 |
| DN80 | 85 | 107 | 202.5 | 101 | 124 | 75 x 5 | 80 PN10:16, 3" ANSI125, 3.5" BS10 Table AD, 3.5" BS10 Table E | 20 | 40 | 3-M12 x 115 | 12392/3 | 3.8 |
| DN100 | 107 | 132 | 228 | 121 | 134 | 75 x 5 | 100 PN10:16, 4" BS10 Table AD, 4" BS10 Table E, 4" AWWAC207 D 100 AS2129 CD, 100 AS4087 16 | 20 | 40 | 3-M12 x 125 | 12392/4 | 4.7 |

Note:

For other sizes of flange adaptors, please see MaxiDapter Flange Adapter section.

*Angularity - Couplings and reducing couplings: offer a maximum of 6° degrees total angular deflection. Flange Adaptors: offer a maximum of 3° degrees total angular deflection; these figures are calculated when using the product on maximum pipe outside diameters. Larger degrees of angular deflection are achievable when product is fitted on smaller pipe outside diameters.

Materials & Relevant Standards

End Ring and Adaptor Body

Ductile Iron to BS EN 1563 Symbol EN GJS-450-10

Centre Sleeve

Sleeve material is rolled Steel to BS EN10025-2 grade S275 or Ductile Iron to BS EN1563 symbol EN GJS-450-10 Compliance with EN 14525

Gasket

EPDM compound Grade E to BS EN 681-1, Type WA, WC

Nitrile compound to Grade G BS EN 682, Type G

Tee Bolts/Bolts

Standard - Steel to BS EN ISO 898-1 Property Class 4.8
Option - Stainless Steel to BS EN ISO 3506-1: grade A4 property class 50

Bolt Torque/Spanner

Bolt torque 55-65Nm, Spanner size A/F 19mm

Nuts/Washers

Nuts

Standard - Steel to BS EN 4190 Grade 4

Option - Stainless Steel to BS EN ISO 3506-2: grade A4 property class 80

The full MaxiFit Range consists of:

MaxiFit Plus
MaxiFit
MaxiFit Xtra
MaxiStep
MaxiDapter
MaxiFit Large Diameter
MaxiCap
MaxiThread End Cap

For further info visit:
www.vikingjohnson.com

MaxiFit Range

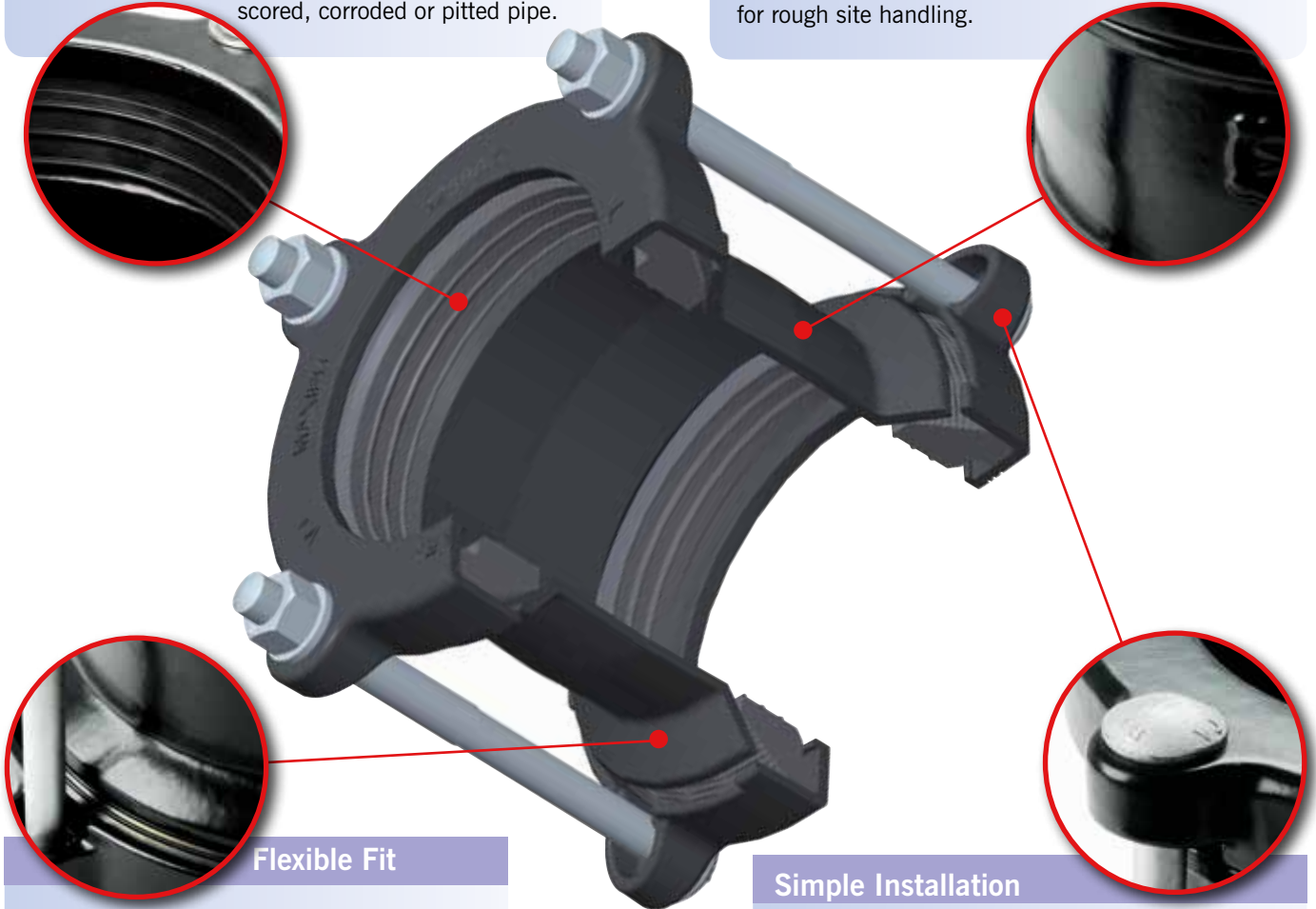
Product Design Benefits

Optimised Gasket Design

A unique gasket with distinctive circumferential ribs provides a 'slide easy' fit for maximum sealing on scored, corroded or pitted pipe.

Excellent Corrosion & Damage Resistance

Coated in black Rilsan Nylon 11 which is WRAS listed and has excellent resistance to impact, abrasion, weathering and chemicals. It also has good thermal stability and flexibility to accommodate for rough site handling.



Flexible Fit

Flared end to the sleeve forms a deep gasket chamber to give maximum possible pipe adjustment.

Simple Installation

Captive, non-rotating bolt heads require just a torque wrench to install.

Couplings & Flange Adaptors

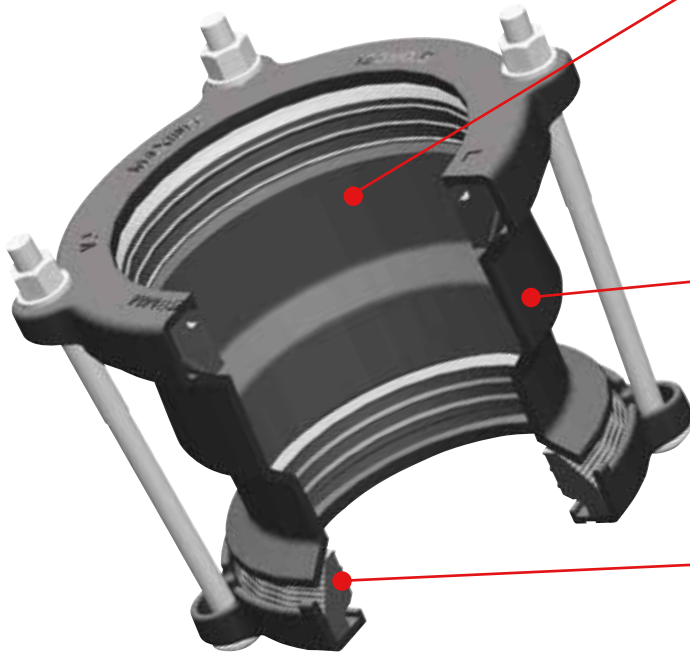
Wide Tolerance

Customer Benefits

- ▶ Design life expectancy of 50 years, established by rigorous 'Accelerated Age Testing' which subjects product to working pressure at 80°C for 1000 hours.
- ▶ Wide tolerances permit lower stock holding.
- ▶ All models accommodate angularity between pipes which allows for normal pipeline movement caused by ground settlement. Couplings and reducing couplings allowing for 6° total angular deflection 3° total on the flange adaptors.

MaxiFit, MaxiFit Xtra & MaxiStep

Product Design Benefits



Simple Installation

Available as standard and long sleeved versions, the MaxiFit Xtra simplifies the installation further, allowing for greater cutting tolerances and a greater pipe insertion depth - sealing beyond corrosion damaged pipe ends to create a safe and permanent repair.

Excellent Repair Product

MaxiStep reducing couplings are designed to provide transitions between pipes of different nominal bores simplifying installations when repairing old pipe with new.

Accommodates Pipe Movement

All models accommodate angularity between pipes which allows for normal pipeline movement due to ground settlement. Couplings and reducing couplings allow for 6° total angular deflection.

MaxiDaptor

Product Design Benefits

Ultimate Flexibility

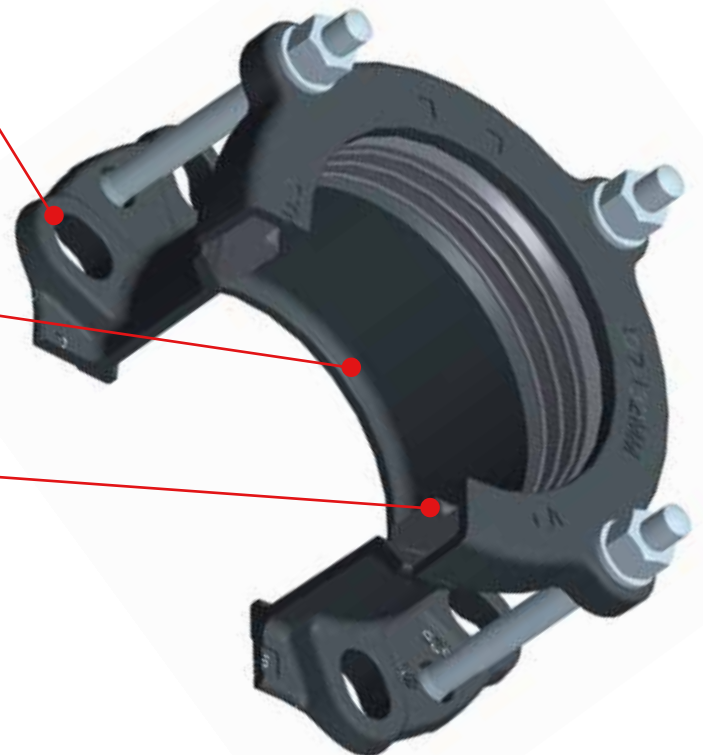
All cast flanges have multi drilling including; BS EN 1092-1, ISO 7005 1:1992, (PN10/16), BS10: 1962 (Table ADE), ANSI/AWWA.

Exceptional Sealing Capabilities

Flanges have an extended sealing face.

Accommodates Pipe Movement

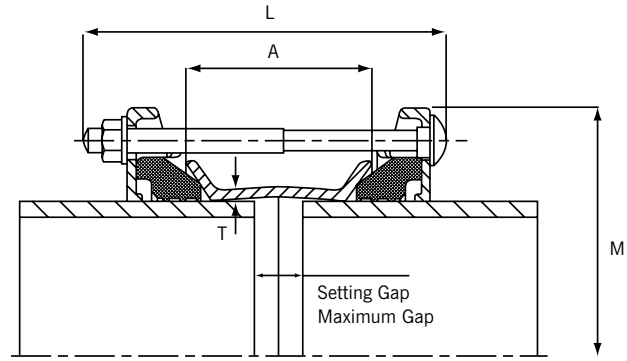
All models accommodate angularity between pipes which allows for normal pipeline movement caused by to ground settlement. Flange adaptors have a total angular deflection of 3°.



MaxiFit & MaxiFit Xtra Couplings & End Caps

Specifications

Working Pressure = 16bar (water)
6bar (gas)



Coupling

Coupling - Standard Sleeve (MaxiFit)

| Nominal Size (mm) | Size Range (mm) | | Diameter (mm) | Overall Length (mm) | | Sleeve Length x Thickness | | Setting Gap (mm) | | Bolts No.-Dia x Length | Gasket Mould No. | Weight (kg) | MaxiCap Available | Maximum Threaded Outlet | MaxiFit Plus Available |
|-------------------|-----------------|-------|---------------|---------------------|-------------|---------------------------|------|------------------|----------|------------------------|------------------|-------------|-------------------|-------------------------|------------------------|
| | Min | Max | | M | L | (A) x (T) | Min | Max | | | | | | | |
| DN40 | 47.9 | 59.5 | 149.5 | 190.0 | 100.0 x 4.5 | 20.0 | 40.0 | 2-M12 x 180 | 1637 | 3.1 | | | | | |
| DN50 | 57.0 | 74.0 | 154.5 | 190.0 | 95.0 x 4.5 | 20.0 | 40.0 | 4-M12 x 180 | 12392/1 | 3.0 | ✓ | 1" | ✓ | | |
| DN65 | 63.0 | 85.0 | 173.5 | 190.0 | 95.0 x 4.5 | 20.0 | 40.0 | 4-M12 x 180 | 12392/2 | 3.6 | ✓ | 1" | ✓ | | |
| DN80 | 85.0 | 107.0 | 195.5 | 190.0 | 95.0 x 4.5 | 20.0 | 40.0 | 4-M12 x 180 | 12392/3 | 4.1 | ✓ | 2" | ✓ | | |
| DN100 | 107.0 | 132.0 | 224.5 | 190.0 | 95.0 x 4.5 | 20.0 | 40.0 | 4-M12 x 180 | 12392/4 | 5.0 | ✓ | 2" | ✓ | | |
| DN125 | 132.0 | 158.0 | 254.5 | 190.0 | 95.0 x 5.0 | 20.0 | 40.0 | 4-M12 x 180 | 12392/6 | 6.1 | ✓ | 2" | ✓ | | |
| DN150 | 158.0 | 184.0 | 280.5 | 190.0 | 95.0 x 5.0 | 20.0 | 40.0 | 4-M12 x 180 | 12392/7 | 7.0 | ✓ | 2" | ✓ | | |
| DN175 | 189.0 | 212.0 | 306.5 | 230.0 | 130.0 x 5.0 | 25.0 | 50.0 | 4-M12 x 220 | 12392/9 | 9.4 | ✓ | 2" | | | |
| DN200 | 218.0 | 244.0 | 342.5 | 230.0 | 130.0 x 5.0 | 25.0 | 50.0 | 4-M12 x 220 | 12392/10 | 10.9 | ✓ | 2" | | | |
| DN225 | 243.0 | 269.0 | 367.5 | 230.0 | 130.0 x 5.0 | 25.0 | 50.0 | 6-M12 x 220 | 12392/11 | 12.4 | ✓ | 2" | | | |
| DN250 | 266.0 | 295.0 | 399.5 | 230.0 | 130.0 x 5.0 | 25.0 | 50.0 | 6-M12 x 220 | 12392/12 | 14.6 | ✓ | 2" | | | |
| DN300 | 315.0 | 349.0 | 462.5 | 230.0 | 130.0 x 5.0 | 25.0 | 50.0 | 8-M12 x 220 | 12392/14 | 19.4 | ✓ | 2" | | | |

Coupling - Long Sleeve (MaxiFit Xtra)

| | | | | | | | | | | | | | | | |
|-------|-------|-------|-------|-------|-------------|------|-------|-------------|----------|------|---|----|--|--|--|
| DN50 | 57.0 | 74.0 | 154.5 | 285.0 | 200.0 x 5.5 | 20.0 | 140.0 | 4-M12 x 275 | 12392/1 | 4.6 | ✓ | 1" | | | |
| DN65 | 63.0 | 85.0 | 173.5 | 285.0 | 190.0 x 5.5 | 20.0 | 130.0 | 4-M12 x 275 | 12392/2 | 5.2 | ✓ | 1" | | | |
| DN80 | 85.0 | 107.0 | 195.5 | 285.0 | 200.0 x 5.5 | 20.0 | 140.0 | 4-M12 x 275 | 12392/3 | 6.3 | ✓ | 2" | | | |
| DN100 | 107.0 | 132.0 | 224.5 | 285.0 | 190.0 x 5.5 | 20.0 | 130.0 | 4-M12 x 275 | 12392/4 | 7.2 | ✓ | 2" | | | |
| DN125 | 132.0 | 158.0 | 254.5 | 285.0 | 190.0 x 6.0 | 20.0 | 130.0 | 4-M12 x 275 | 12392/6 | 9.0 | ✓ | 2" | | | |
| DN150 | 158.0 | 184.0 | 280.5 | 285.0 | 190.0 x 6.0 | 20.0 | 130.0 | 4-M12 x 275 | 12392/7 | 10.3 | ✓ | 2" | | | |
| DN175 | 189.0 | 212.0 | 306.5 | 285.0 | 190.0 x 6.0 | 25.0 | 110.0 | 4-M12 x 275 | 12392/9 | 12.1 | ✓ | 2" | | | |
| DN200 | 218.0 | 244.0 | 342.5 | 285.0 | 190.0 x 6.0 | 25.0 | 110.0 | 4-M12 x 275 | 12392/10 | 14.1 | ✓ | 2" | | | |
| DN225 | 243.0 | 269.0 | 367.5 | 350.0 | 250.0 x 6.0 | 25.0 | 165.0 | 6-M12 x 340 | 12392/11 | 18.6 | ✓ | 2" | | | |
| DN250 | 266.0 | 295.0 | 399.5 | 350.0 | 250.0 x 6.0 | 25.0 | 165.0 | 6-M12 x 340 | 12392/12 | 21.4 | ✓ | 2" | | | |
| DN300 | 315.0 | 349.0 | 462.5 | 350.0 | 240.0 x 6.0 | 25.0 | 155.0 | 8-M12 x 340 | 12392/14 | 27.0 | ✓ | 2" | | | |

Materials & Relevant Standards

End Ring and Adaptor Body/Centre Sleeve

Ductile Iron to BS EN 1563 Symbol EN GJS-450-10

Gasket

EPDM compound Grade E to BS EN 681-1, Type WA, WC

Nitrile compound to Grade G BS EN 682, Type G

Tee Bolts/Bolts

Steel to BS EN ISO 898-1 Property Class 4.8

Bolt Torque/Spanner

Bolt torque 55-65Nm, Spanner size A/F 19mm

Bolts

Standard - Steel to BS EN ISO 898-1: property class 4.8

Option - Stainless Steel to BS EN ISO 3506-1: grade A4 property class 50

Nuts/Washers

Nuts

Standard - Steel to BS EN 4190 Grade 4

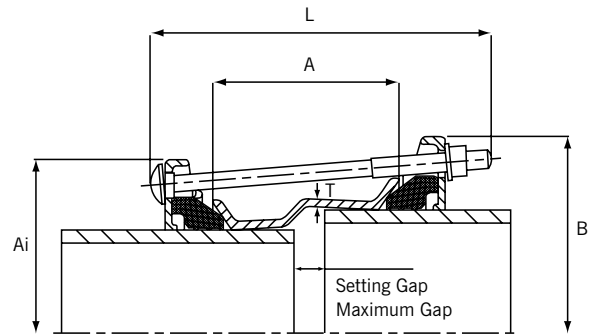
Option - Stainless Steel to BS EN ISO 3506-2: grade A4 property class 80

Every effort has been made to ensure that the information contained in this publication is accurate at the time of publishing. Crane Ltd assumes no responsibility or liability for typographical errors or omissions or for any misinterpretation of the information within the publication and reserves the right to change without notice.

MaxiStep Reducing Couplings

Specifications

Working Pressure = 16bar (water)
6bar (gas)



Reducing Coupling

| Nom Size | Size Range (mm) | | | | Diameter (mm) | | Overall Length (mm) | Sleeve Length x Thickness | Setting Gap (mm) | | Bolts No.-Dia x Length | Gasket Mould No. | | Weight (kg) |
|----------|-----------------|-------|-------|-------|---------------|-------|---------------------|---------------------------|------------------|------|------------------------|------------------|-----------|-------------|
| | Min | Max | Min | Max | Ai | B | | | Min | Max | | Small End | Large End | |
| 50/65 | 57.0 | 74.0 | 63.0 | 85.0 | 154.5 | 173.5 | 210.0 | 110.0 x 4.5 | 20.0 | 40.0 | 4-M12 x 200 | 12392/1 | 12392/2 | 3.5 |
| 50/80 | 57.0 | 74.0 | 85.0 | 107.0 | 154.5 | 195.5 | 210.0 | 110.0 x 4.5 | 20.0 | 40.0 | 4-M12 x 200 | 12392/1 | 12392/3 | 3.9 |
| 65/80 | 63.0 | 85.0 | 85.0 | 107.0 | 173.5 | 195.5 | 210.0 | 110.0 x 4.5 | 20.0 | 40.0 | 4-M12 x 200 | 12392/2 | 12392/3 | 4.2 |
| 80/100 | 85.0 | 107.0 | 107.0 | 132.0 | 195.5 | 224.5 | 210.0 | 110.0 x 4.5 | 20.0 | 40.0 | 4-M12 x 200 | 12392/3 | 12392/4 | 4.8 |
| 100/125 | 107.0 | 132.0 | 132.0 | 158.0 | 224.5 | 254.5 | 220.0 | 120.0 x 4.5 | 20.0 | 40.0 | 4-M12 x 210 | 12392/4 | 12392/6 | 6.2 |
| 125/150 | 132.0 | 158.0 | 158.0 | 184.0 | 254.5 | 280.5 | 220.0 | 120.0 x 5.0 | 20.0 | 40.0 | 4-M12 x 210 | 12392/6 | 12392/7 | 7.2 |
| 150/175 | 158.0 | 184.0 | 189.0 | 212.0 | 280.5 | 306.5 | 230.0 | 130.0 x 5.0 | 25.0 | 50.0 | 4-M12 x 220 | 12392/7 | 12392/9 | 8.8 |
| 175/200 | 189.0 | 212.0 | 218.0 | 244.0 | 306.5 | 342.5 | 230.0 | 130.0 x 5.0 | 25.0 | 50.0 | 4-M12 x 220 | 12392/9 | 12392/10 | 10.4 |
| 200/225 | 218.0 | 244.0 | 243.0 | 269.0 | 342.5 | 367.5 | 230.0 | 130.0 x 5.0 | 25.0 | 50.0 | 6-M12 x 220 | 12392/10 | 12392/11 | 12.2 |
| 225/250 | 243.0 | 269.0 | 266.0 | 295.0 | 367.5 | 399.5 | 230.0 | 130.0 x 5.0 | 25.0 | 50.0 | 6-M12 x 220 | 12392/11 | 12392/12 | 13.7 |

Materials & Relevant Standards

End Ring and Adaptor Body/Centre Sleeve

Ductile Iron to BS EN 1563 Symbol EN GJS-450-10

Gasket

EPDM compound Grade E to BS EN 681-1, Type WA, WC

Nitrile compound to Grade G BS EN 682, Type G

Tee Bolts/Bolts

Steel to BS EN ISO 898-1 Property Class 4.8

Bolt Torque/Spanner

Bolt torque 55-65Nm, Spanner size A/F 19mm

Bolts

Standard - Steel to BS EN ISO 898-1: property class 4.8

Option - Stainless Steel to BS EN ISO 3506-1: grade A4 property class 50

Nuts/Washers

Nuts

Standard - Steel to BS EN 4190 Grade 4

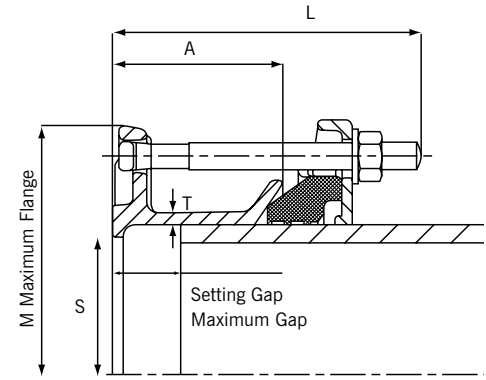
Option - Stainless Steel to BS EN ISO 3506-2: grade A4 property class 80

Every effort has been made to ensure that the information contained in this publication is accurate at the time of publishing. Crane Ltd assumes no responsibility or liability for typographical errors or omissions or for any misinterpretation of the information within the publication and reserves the right to change without notice.

MaxiDaptor Flange Adaptors

Specifications

Working Pressure = 16bar (water)
6bar (gas)



Flange Adaptor

| Nom Size | Size Range (mm) | | Diameter (mm) | Bores (mm) | Overall Length (mm) | Sleeve Length x Thickness | Flange Drilling | Setting Gap (mm) | | Bolts No.-Dia x Length | Gasket Mould No. | Weight (kg) | MaxiFit Plus Available |
|----------|-----------------|-------|---------------|------------|---------------------|---------------------------|---|------------------|------|------------------------|------------------|-------------|------------------------|
| | Min | Max | M | S | L | (A) x (T) | | Min | Max | | | | |
| 50 | 57.0 | 74.0 | 163.4 | 59.0 | 124.0 | 75.0 x 5.0 | 50 PN10:16, 2.5" BS10 Table ADE, 2" ANSI125 | 20.0 | 40.0 | 4-M12 x 115 | 12392/1 | 2.7 | |
| 65 | 63.0 | 85.0 | 196.9 | 75.0 | 124.0 | 75.0 x 5.0 | 60 PN10:16, 65 PN10:16, 80 PN10:16, 3" BS10 Table ADE, 2.5" ANSI125, 3" ANSI125 80 AS2129 CD, 80 AS4087 16 | 20.0 | 40.0 | 4-M12 x 115 | 12392/2 | 3.5 | ✓ |
| 80 | 85.0 | 107.0 | 202.5 | 101.0 | 124.0 | 75.0 x 5.0 | 80 PN10:16, 3" ANSI125, 3.5" BS10 Table AD, 3.5" BS10 Table E | 20.0 | 40.0 | 4-M12 x 115 | 12392/3 | 3.7 | ✓ |
| 100 | 107.0 | 132.0 | 228.0 | 121.0 | 134.0 | 75.0 x 5.0 | 100 PN 10:16, 4" BS10 Table AD, 4" BS10 Table E, 4" AWWA C207 D, 100 AS2129 CD, 100 AS4087 16 | 20.0 | 40.0 | 4-M12 x 125 | 12392/4 | 4.4 | ✓ |
| 125 | 132.0 | 158.0 | 281.5 | 150.0 | 134.0 | 75.0 x 5.0 | 125 PN10:16, 150 PN10:16 5" BS10 Table A, 5" BS10 Table DE, 6" BS10 Table A, 6" BS10 Table D, 6" BS10 Table E, 6" AWWA C207 D, 125 AS2129 CD, 150 AS2129 CD, 125 AS4087 16, 150 AS4087 16 | 20.0 | 40.0 | 4-M12 x 125 | 12392/6 | 5.6 | |
| 150 | 158.0 | 184.0 | 281.2 | 173.0 | 134.0 | 75.0 x 5.0 | 150 PN10:16, 6" BS10 Table A, 6" BS10 Table D, 6" AWWA C207 D, 150 AS4087 16, 150 AS2129 CD, | 20.0 | 40.0 | 4-M12 x 125 | 12392/7 | 6.0 | |
| 175 | 189.0 | 212.0 | 336.5 | 202.0 | 133.0 | 75.0 x 5.0 | 200 PN10:16, 8" BS10 Table AD, 8" AWWA C207 D, 200 AS2129 CD, 200 AS4087 16 | 25.0 | 40.0 | 4-M12 x 125 | 12392/9 | 8.3 | |
| 200 | 218.0 | 244.0 | 337.8 | 225.0 | 134.0 | 75.0 x 5.0 | 200 PN10:16, 8" BS10 Table AD, 8" AWWA C207 D, 200 AS2129 CD | 25.0 | 40.0 | 4-M12 x 125 | 12392/10 | 8.3 | |
| 225 | 243.0 | 269.0 | 401.5 | 252.0 | 144.0 | 85.0 x 5.0 | 250 PN10:16, 250 AS4087 16 | 25.0 | 50.0 | 6-M12 x 135 | 12392/11 | 10.9 | |
| 250 | 266.0 | 295.0 | 402.1 | 277.0 | 146.0 | 85.0 x 5.0 | 250 PN10:16, 250 AS4087 16 | 25.0 | 50.0 | 6-M12 x 135 | 12392/12 | 11.4 | |
| 300 | 315.0 | 349.0 | 457.8 | 329.0 | 155.0 | 100.0 x 5.0 | 300 PN10:16, 12" BS10 Table D, 300 AS2129 CD | 25.0 | 60.0 | 6-M12 x 145 | 12392/14 | 14.8 | |

Materials & Relevant Standards

End Ring and Adaptor Body/Centre Sleeve

Ductile Iron to BS EN 1563 Symbol EN GJS-450-10

Gasket

EPDM compound Grade E to BS EN 681-1, Type WA, WC

Nitrile compound to Grade G BS EN 682, Type G

Tea Bolts/Bolts

Standard - Steel to BS EN ISO 898-1: property class 4.8

Option - Stainless Steel to BS EN ISO 3506-1: grade A4 property class 50

Bolt Torque/Spanner

Bolt torque 55-65Nm, Spanner size A/F 19mm

Nuts/Washers

Nuts

Standard - Steel to BS EN 4190 Grade 4

Option - Stainless Steel to BS EN ISO 3506-2: grade A4 property class 80

Every effort has been made to ensure that the information contained in this publication is accurate at the time of publishing. Crane Ltd assumes no responsibility or liability for typographical errors or omissions or for any misinterpretation of the information within the publication and reserves the right to change without notice.

United Kingdom - Lancashire

Hodder Aqueduct

MaxiStep Reducing Coupling - DN700

Project

Relining & Cleaning Scheme -
The 28 mile Hodder Aqueduct
was originally constructed in
1925 by Flyde Water Board to
supply water to Blackpool from
Stocks reservoir.

Client

United Utilities

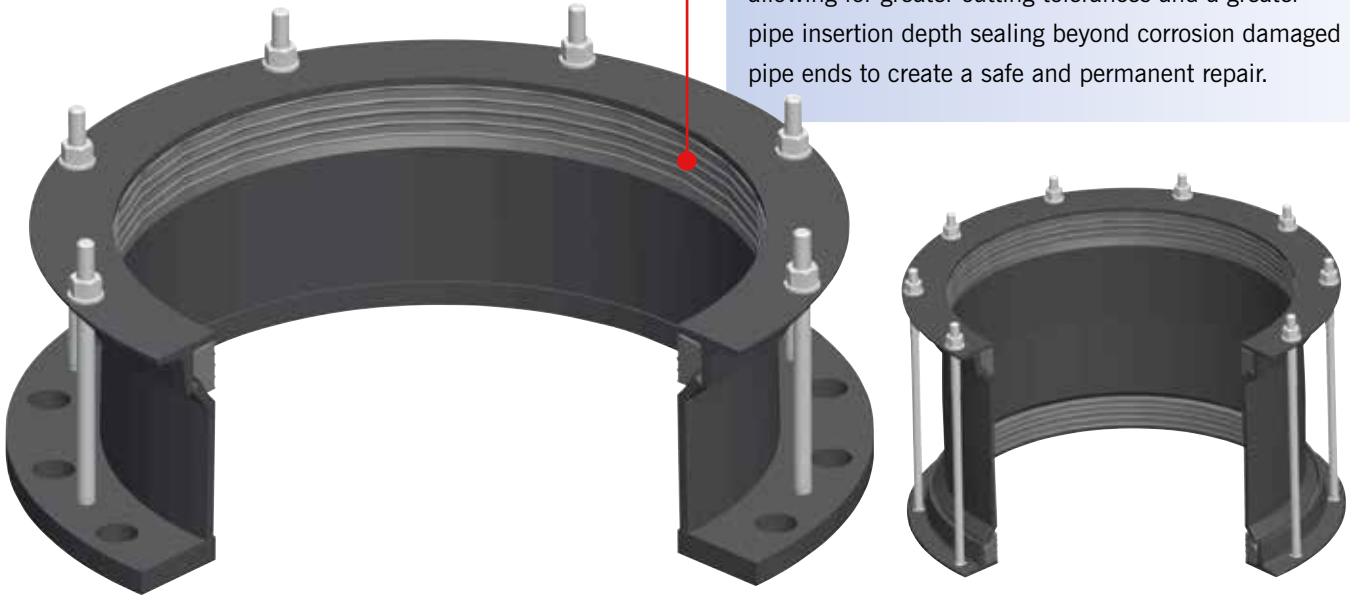


MaxiFit Large Diameter

Product Design Benefits

Simple to Fit

All Large Diameter MaxiFit, MaxiStep & MaxiDaptor products (DN350 – DN700) have a long sleeve length as standard; this is a major benefit to the installer, allowing for greater cutting tolerances and a greater pipe insertion depth sealing beyond corrosion damaged pipe ends to create a safe and permanent repair.



MaxiCap & MaxiThread End Cap

Product Design Benefits

Designed for testing and blanking off a pipe end, although the assembly must have suitable external support to prevent movement under pressure. Alternatively, the MaxiCap provides a connection between a plain ended and a threaded pipe.

Dual Purpose

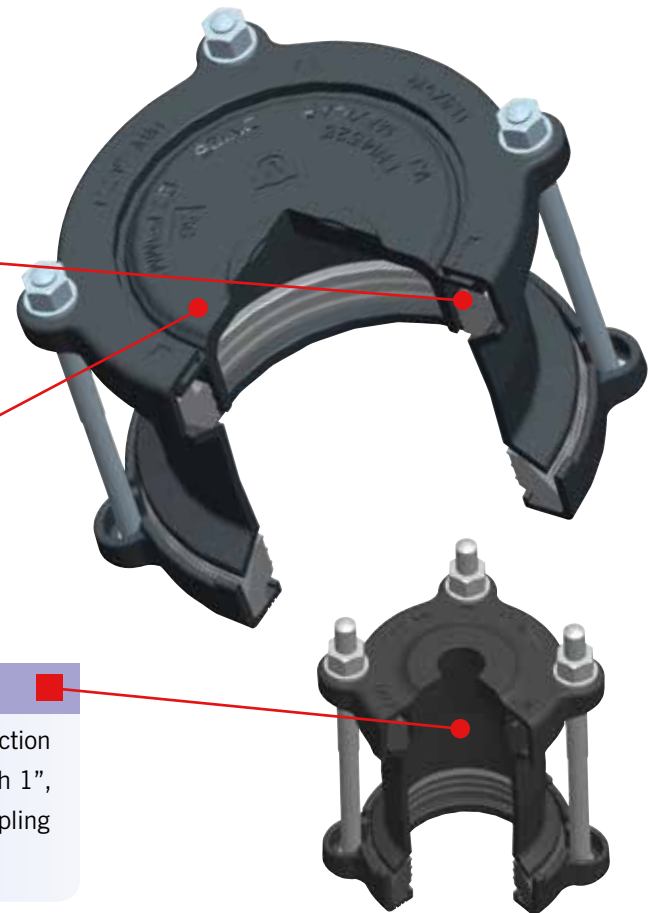
The MaxiCap end cap fits inside the end ring to the MaxiFit and can be drilled and tapped to form an outlet (up to 2" depending on size).

Enables Testing On-Site

Converts product to cap end for testing and blanking off (Although the assembly must have suitable external support to prevent movement under pressure).

Connects to Threaded Pipe

The MaxiThread threaded end cap is designed to provide a connection between plain-ended and threaded pipe. Outlets are available with 1", 1.25" and 1.5" BSP threads. It is constructed with a MaxiFit coupling body with one standard end ring and one threaded end ring.



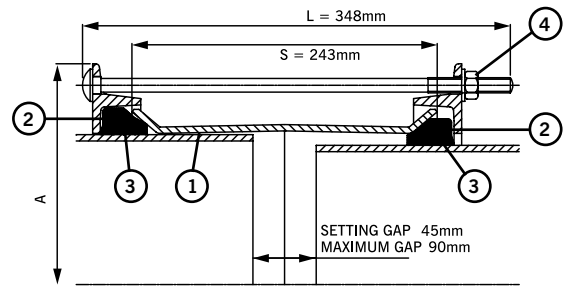
MaxiFit Large Diameter Couplings

Specifications

1 = Sleeve 2 = End Ring
3 = Gasket 4 = Bolts, Nuts & Washer

Working Pressure = 16bar (water)
6bar (gas)

Coupling



| OD Range | | Dimensions | Gasket Mould No. | Bolts No.-Dia x Length | Weight (kg) |
|----------|----------|--------------------------|------------------|------------------------|-------------|
| Min (mm) | Max (mm) | End Ring Diameter A (mm) | | | |
| 351.0 | 368.0 | 478.0 | 6002 | 8-M12 x 340 | 30.1 |
| 374.5 | 391.5 | 501.5 | 1659 | 8-M12 x 340 | 31.9 |
| 386.0 | 403.0 | 513.0 | 6035 | 8-M12 x 340 | 32.6 |
| 394.3 | 411.3 | 521.5 | 1766 | 8-M12 x 340 | 33.2 |
| 404.8 | 421.8 | 532.0 | 1767 | 8-M12 x 340 | 34.0 |
| 412.0 | 429.0 | 539.0 | 6023 | 10-M12 x 340 | 35.1 |
| 418.2 | 435.2 | 545.0 | 1784 | 8-M12 x 340 | 34.9 |
| 425.0 | 442.0 | 552.0 | 1662 | 8-M12 x 340 | 35.5 |
| 434.5 | 451.5 | 561.5 | 1768 | 10-M12 x 340 | 37.0 |
| 439.0 | 456.0 | 566.0 | 6036 | 10-M12 x 340 | 37.3 |
| 447.2 | 464.2 | 574.0 | 1769 | 10-M12 x 340 | 37.9 |
| 455.0 | 472.0 | 582.0 | 6003 | 10-M12 x 340 | 38.5 |
| 467.0 | 484.0 | 594.0 | 6073 | 10-M12 x 340 | 39.3 |
| 476.0 | 493.0 | 603.0 | 1770 | 10-M12 x 340 | 39.9 |
| 487.0 | 504.3 | 614.5 | 1771 | 10-M12 x 340 | 40.7 |
| 492.0 | 509.0 | 619.0 | 6037 | 10-M12 x 340 | 41.1 |
| 501.9 | 518.9 | 629.0 | 1772 | 10-M12 x 340 | 41.8 |
| 510.0 | 527.0 | 637.0 | 6004 | 10-M12 x 340 | 42.3 |
| 515.0 | 532.0 | 642.0 | 6024 | 10-M12 x 340 | 42.8 |
| 527.0 | 544.0 | 654.0 | 1773 | 12-M12 x 340 | 44.1 |
| 540.1 | 557.1 | 667.0 | 1774 | 10-M12 x 340 | 44.5 |
| 546.0 | 563.0 | 673.0 | 6038 | 12-M12 x 340 | 45.5 |
| 555.3 | 572.3 | 682.5 | 1775 | 12-M12 x 340 | 46.1 |
| 565.0 | 582.0 | 692.0 | 1776 | 12-M12 x 340 | 46.8 |
| 582.2 | 599.2 | 709.0 | 1777 | 12-M12 x 340 | 48.0 |
| 593.0 | 610.0 | 720.0 | 6021 | 12-M12 x 340 | 48.8 |
| 601.0 | 618.0 | 728.0 | 6020 | 12-M12 x 340 | 49.4 |
| 613.0 | 630.0 | 740.0 | 6019 | 12-M12 x 340 | 50.3 |
| 618.0 | 635.0 | 745.0 | 6025 | 12-M12 x 340 | 50.6 |
| 630.0 | 647.0 | 757.0 | 1778 | 14-M12 x 340 | 52.0 |
| 645.2 | 662.2 | 772.0 | 1779 | 14-M12 x 340 | 53.0 |
| 654.0 | 671.0 | 781.0 | 6039 | 14-M12 x 340 | 53.8 |
| 662.0 | 679.0 | 789.0 | 1780 | 14-M12 x 340 | 54.3 |
| 675.0 | 692.0 | 802.0 | 6005 | 14-M12 x 340 | 55.2 |
| 689.0 | 706.0 | 816.0 | 10511/49 | 14-M12 x 340 | 56.3 |
| 695.0 | 712.0 | 822.0 | 6063 | 14-M12 x 340 | 56.7 |
| 710.0 | 727.0 | 837.0 | 6075 | 14-M12 x 340 | 57.7 |

Materials & Relevant Standards

Sleeve

Rolled Steel to BS EN 10025-2 Grade S275

End Ring

Rolled Steel to BS EN 10025-2 Grade S275

Gasket

EPDM Grade "E" to BS EN 681-1 Type WA WRAS Listed

Bolt Torque / Spanner

Bolt torque - 55-65Nm / Spanner size - A/F 19mm

Coating

Sleeve & End Ring = Rilsan Nylon 11 to WIS 4-52-01 Part 1

Bolts & Nuts = Sheraplex to WIS 4-52-03

Bolts, Nuts & Washer

Bolts

Standard - Steel to BS EN ISO 898-1 Property Class 4.8

Option - Stainless Steel to BS EN ISO 3506-1: grade A4 property class 50

Nuts

Standard - Steel to BS EN 4190 Grade 4

Option - Stainless Steel to BS EN ISO 3506-2: grade A4 property class 80

Washers

Stainless Steel to BS 1449:Part 2 Grade 304 S15

Every effort has been made to ensure that the information contained in this publication is accurate at the time of publishing. Crane Ltd assumes no responsibility or liability for typographical errors or omissions or for any misinterpretation of the information within the publication and reserves the right to change without notice.

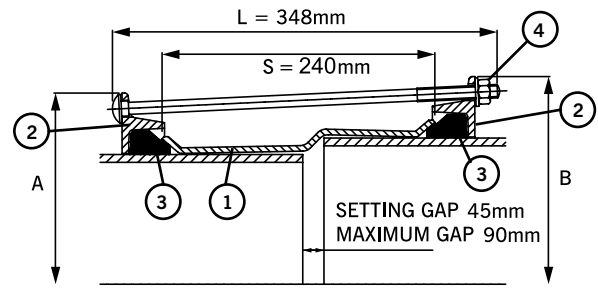
MaxiStep Large Diameter Expanded Sleeve Stepped Couplings

Specifications

1 = Sleeve 2 = End Ring
3 = Gasket 4 = Bolts, Nuts & Washer

Working Pressure = 16bar (water)
6bar (gas)

Expanded Sleeve Stepped Coupling



| OD Range | | | | Gasket Mould No. | | Bolts No. - Dia x Length | Dimensions | | Weight (kg) |
|-----------|----------|-----------|----------|------------------|-----------|-----------------------------|-------------------|------------------|----------------|
| Small End | | Large End | | Small End | Large End | | End Ring Diameter | | |
| Min (mm) | Max (mm) | Min (mm) | Max (mm) | | | | Small End A (mm) | Large End B (mm) | |
| 374.5 | 391.5 | 394.3 | 411.3 | 1659 | 1766 | 8-M12 x 340 | 501.5 | 521.5 | 32.1 |
| 374.5 | 391.5 | 404.8 | 421.8 | 1659 | 1767 | 8-M12 x 340 | 501.5 | 532.0 | 32.4 |
| 374.5 | 391.5 | 418.2 | 435.2 | 1659 | 1784 | 10-M12 x 340 | 501.5 | 545.0 | 33.1 |
| 386.0 | 403.0 | 412.0 | 429.0 | 6035 | 6023 | 10-M12 x 340 | 513.0 | 539.0 | 33.6 |
| 394.3 | 411.3 | 418.2 | 435.2 | 1766 | 1784 | 10-M12 x 340 | 521.5 | 545.0 | 34.1 |
| 404.8 | 421.8 | 418.2 | 435.2 | 1767 | 1784 | 10-M12 x 340 | 532.0 | 545.0 | 34.7 |
| 404.8 | 421.8 | 425.0 | 442.0 | 1767 | 1662 | 10-M12 x 340 | 532.0 | 552.0 | 34.8 |
| 425.0 | 442.0 | 434.5 | 451.4 | 1662 | 1768 | 10-M12 x 340 | 552.0 | 561.5 | 36.3 |
| 425.0 | 442.0 | 447.2 | 464.2 | 1662 | 1769 | 10-M12 x 340 | 552.0 | 574.0 | 36.5 |
| 425.0 | 442.0 | 455.0 | 472.0 | 1662 | 6003 | 10-M12 x 340 | 552.0 | 582.0 | 36.6 |
| 439.0 | 456.0 | 467.0 | 484.0 | 6036 | 6073 | 10-M12 x 340 | 566.0 | 594.0 | 37.8 |
| 455.0 | 472.0 | 467.0 | 484.0 | 6003 | 6073 | 10-M12 x 340 | 582.0 | 594.0 | 38.7 |
| 476.0 | 493.0 | 487.3 | 504.3 | 1770 | 1771 | 10-M12 x 340 | 603.0 | 614.5 | 40.1 |
| 476.0 | 493.0 | 501.9 | 518.9 | 1770 | 1772 | 10-M12 x 340 | 603.0 | 629.0 | 40.4 |
| 476.0 | 493.0 | 510.0 | 527.0 | 1770 | 6004 | 10-M12 x 340 | 603.0 | 637.0 | 40.5 |
| 492.0 | 509.0 | 510.0 | 527.0 | 6037 | 6004 | 10-M12 x 340 | 619.0 | 637.0 | 41.4 |
| 492.0 | 509.0 | 527.0 | 544.0 | 6037 | 1773 | 12-M12 x 340 | 619.0 | 654.0 | 42.2 |
| 501.9 | 518.9 | 527.0 | 544.0 | 1772 | 1773 | 12-M12 x 340 | 629.0 | 654.0 | 42.8 |
| 510.0 | 527.0 | 527.0 | 544.0 | 6004 | 1773 | 12-M12 x 340 | 637.0 | 654.0 | 43.1 |
| 527.0 | 544.0 | 540.1 | 557.1 | 1773 | 1774 | 12-M12 x 340 | 654.0 | 667.0 | 44.3 |
| 527.0 | 544.0 | 555.3 | 572.3 | 1773 | 1775 | 12-M12 x 340 | 654.0 | 682.5 | 44.6 |
| 527.0 | 544.0 | 566.5 | 583.5 | 1773 | 1776 | 12-M12 x 340 | 654.0 | 693.5 | 44.8 |
| 527.0 | 544.0 | 573.0 | 590.0 | 1773 | 6129 | 12-M12 x 340 | 654.0 | 700.0 | 44.9 |
| 527.0 | 544.0 | 582.2 | 599.2 | 1773 | 1777 | 12-M12 x 340 | 654.0 | 709.0 | 45.1 |
| 546.0 | 563.0 | 590.5 | 607.5 | 6038 | 6074 | 12-M12 x 340 | 673.0 | 717.5 | 46.3 |
| 598.0 | 615.0 | 630.0 | 647.0 | 6130 | 1778 | 14-M12 x 340 | 725.0 | 757.0 | 50.3 |
| 601.0 | 618.0 | 630.0 | 647.0 | 6020 | 1778 | 14-M12 x 340 | 728.0 | 757.0 | 50.4 |
| 601.0 | 618.0 | 645.2 | 662.2 | 6020 | 1779 | 14-M12 x 340 | 728.0 | 772.0 | 50.7 |
| 618.0 | 635.0 | 630.0 | 647.0 | 6025 | 1778 | 14-M12 x 340 | 745.0 | 757.0 | 51.3 |
| 630.0 | 647.0 | 645.2 | 662.2 | 1778 | 1779 | 14-M12 x 340 | 757.0 | 772.0 | 52.3 |
| 630.0 | 647.0 | 654.0 | 671.0 | 1778 | 6039 | 14-M12 x 340 | 757.0 | 781.0 | 52.4 |
| 630.0 | 647.0 | 662.0 | 679.0 | 1778 | 1780 | 14-M12 x 340 | 757.0 | 789.0 | 52.6 |
| 630.0 | 647.0 | 675.0 | 692.0 | 1778 | 6005 | 14-M12 x 340 | 757.0 | 802.0 | 52.8 |
| 654.0 | 671.0 | 710.0 | 727.0 | 6039 | 6075 | 14-M12 x 340 | 781.0 | 837.0 | 54.7 |
| 733.0 | 750.0 | 741.0 | 758.0 | 10511/46 | 10511/51 | 16-M12 x 340 | 860.0 | 868.0 | 60.1 |

Materials & Relevant Standards

Make Up Ring Sleeve

Mild Steel to BS EN 10025-2 Grade S275
Rolled Steel to BS EN 10025-2 Grade S275

End Ring

Rolled Steel to BS EN 10025-2 Grade S275

Gasket

EPDM Grade "E" to BS EN 681-1 Type WA WRAS Listed

Bolt Torque / Spanner

Bolt torque - 55-65Nm / Spanner size - A/F 19mm

Coating

Sleeve & End Ring = Rilsan Nylon 11 to WIS 4-52-01 Part 1

Bolts & Nuts = Sheraplex to WIS 4-52-03

Bolts, Nuts & Washer

Bolts

Standard - Steel to BS EN ISO 898-1 Property Class 4.8

Option - Stainless Steel to BS EN ISO 3506-1: grade A4 property class 50

Nuts

Standard - Steel to BS EN 4190 Grade 4

Option - Stainless Steel to BS EN ISO 3506-2: grade A4 property class 80

Washers

Stainless Steel to BS 1449:Part 2 Grade 304 S15

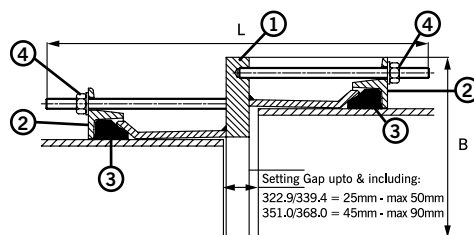
Every effort has been made to ensure that the information contained in this publication is accurate at the time of publishing. Crane Ltd assumes no responsibility or liability for typographical errors or omissions or for any misinterpretation of the information within the publication and reserves the right to change without notice.

MaxiStep Large Diameter Make Up Ring Stepped Couplings

Specifications

Working Pressure = 16bar (water)
6bar (gas)

- 1 = Make Up Ring Sleeve
- 2 = End Ring
- 3 = Gasket
- 4 = Stud, Nut & Washer



Make Up Ring Stepped Couplings

| OD Range | | | | Gasket Mould | | Studs | | Dimensions | | Weight (Kg) |
|-----------|----------|-----------|----------|--------------|-----------|----------------------------|----------------------------|-------------------------|-----------------------|-------------|
| Small End | | Large End | | Small End | Large End | Small End No.-Dia x Length | Large End No.-Dia x Length | Overall Diameter B (mm) | Overall Length L (mm) | |
| Min (mm) | Max (mm) | Min (mm) | Max (mm) | | | | | | | |
| 315.0 | 332.0 | 351.0 | 368.0 | 1738 | 6002 | 8-M12 x 125 | 8-M12 x 205 | 478 | 326 | 39.3 |
| 315.0 | 332.0 | 367.0 | 384.0 | 1738 | 6097 | 8-M12 x 125 | 8-M12 x 190 | 494 | 316 | 45.6 |
| 315.0 | 332.0 | 374.5 | 391.5 | 1738 | 1659 | 8-M12 x 125 | 8-M12 x 205 | 502 | 335 | 47.3 |
| 315.0 | 332.0 | 404.8 | 421.8 | 1738 | 1767 | 8-M12 x 125 | 8-M12 x 205 | 532 | 335 | 53.1 |
| 315.0 | 332.0 | 418.2 | 435.2 | 1738 | 1784 | 8-M12 x 125 | 10-M12 x 205 | 545 | 337 | 58.6 |
| 322.9 | 339.4 | 374.5 | 391.5 | 1657 | 1659 | 8-M12 x 125 | 8-M12 x 205 | 502 | 331 | 46.7 |
| 351.0 | 368.0 | 367.0 | 384.0 | 6002 | 6097 | 8-M12 x 205 | 8-M12 x 205 | 494 | 410 | 43.7 |
| 351.0 | 368.0 | 374.5 | 391.5 | 6002 | 1659 | 8-M12 x 205 | 8-M12 x 205 | 502 | 410 | 44.9 |
| 351.0 | 368.0 | 394.3 | 411.3 | 6002 | 1766 | 8-M12 x 205 | 8-M12 x 205 | 522 | 410 | 48.1 |
| 351.0 | 368.0 | 527.0 | 544.0 | 6002 | 1773 | 8-M12 x 205 | 12-M12 x 205 | 654 | 423 | 96.0 |
| 367.0 | 384.0 | 374.5 | 391.5 | 6097 | 1659 | 8-M12 x 205 | 8-M12 x 205 | 502 | 410 | 44.2 |
| 374.5 | 391.5 | 412.0 | 429.0 | 1659 | 6023 | 8-M12 x 205 | 10-M12 x 205 | 539 | 410 | 54.0 |
| 374.5 | 391.5 | 425.0 | 442.0 | 1659 | 1662 | 8-M12 x 205 | 10-M12 x 205 | 552 | 411 | 56.6 |
| 394.3 | 411.3 | 404.8 | 421.8 | 1766 | 1767 | 8-M12 x 205 | 8-M12 x 205 | 532 | 410 | 47.1 |
| 394.3 | 411.3 | 425.0 | 442.0 | 1766 | 1662 | 8-M12 x 205 | 10-M12 x 205 | 552 | 410 | 50.8 |
| 394.3 | 411.3 | 447.2 | 464.2 | 1766 | 1769 | 8-M12 x 205 | 10-M12 x 205 | 574 | 415 | 59.6 |
| 404.8 | 421.8 | 434.5 | 451.5 | 1767 | 1768 | 8-M12 x 205 | 10-M12 x 205 | 562 | 420 | 51.9 |
| 404.8 | 421.8 | 439.0 | 456.0 | 1767 | 6036 | 8-M12 x 205 | 10-M12 x 205 | 566 | 415 | 56.9 |
| 404.8 | 421.8 | 447.2 | 464.2 | 1767 | 1769 | 8-M12 x 205 | 10-M12 x 205 | 574 | 415 | 58.6 |
| 404.8 | 421.8 | 467.0 | 484.0 | 1767 | 6073 | 8-M12 x 205 | 10-M12 x 205 | 594 | 415 | 62.8 |
| 412.0 | 429.0 | 425.0 | 442.0 | 6023 | 1662 | 10-M12 x 205 | 10-M12 x 205 | 552 | 410 | 50.0 |
| 418.2 | 435.2 | 434.5 | 451.5 | 1784 | 1768 | 10-M12 x 205 | 10-M12 x 205 | 562 | 411 | 51.3 |
| 418.2 | 435.2 | 455.0 | 472.0 | 1784 | 6003 | 10-M12 x 205 | 10-M12 x 205 | 582 | 415 | 59.4 |
| 425.0 | 442.0 | 476.0 | 493.0 | 1662 | 1770 | 10-M12 x 205 | 10-M12 x 205 | 603 | 411 | 63.2 |
| 425.0 | 442.0 | 487.0 | 504.0 | 1662 | 1771 | 10-M12 x 205 | 10-M12 x 205 | 615 | 411 | 65.7 |
| 425.0 | 442.0 | 527.0 | 544.0 | 1662 | 1773 | 10-M12 x 205 | 12-M12 x 205 | 654 | 392 | 81.6 |
| 425.0 | 442.0 | 555.3 | 572.3 | 1662 | 1775 | 10-M12 x 205 | 12-M12 x 205 | 683 | 421 | 92.3 |
| 425.0 | 442.0 | 565.0 | 582.0 | 1662 | 1776 | 10-M12 x 205 | 12-M12 x 205 | 692 | 422 | 95.9 |
| 439.0 | 456.0 | 527.0 | 544.0 | 6036 | 1773 | 10-M12 x 205 | 12-M12 x 205 | 654 | 419 | 78.7 |
| 447.2 | 464.2 | 476.0 | 493.0 | 1769 | 1770 | 10-M12 x 205 | 10-M12 x 205 | 603 | 410 | 56.7 |
| 447.2 | 464.2 | 487.0 | 504.3 | 1769 | 1771 | 10-M12 x 205 | 10-M12 x 205 | 615 | 415 | 63.7 |
| 447.2 | 464.4 | 455.0 | 472.0 | 1769 | 6003 | 10-M12 x 205 | 10-M12 x 205 | 582 | 411 | 52.9 |
| 476.0 | 493.0 | 527.0 | 544.0 | 1770 | 1773 | 10-M12 x 205 | 12-M12 x 205 | 654 | 415 | 69.7 |
| 492.0 | 509.0 | 555.3 | 572.3 | 6037 | 1775 | 10-M12 x 205 | 12-M12 x 205 | 683 | 416 | 76.1 |
| 501.9 | 518.9 | 540.1 | 557.1 | 1772 | 1774 | 10-M12 x 205 | 12-M12 x 205 | 667 | 411 | 69.7 |
| 527.0 | 544.0 | 598.0 | 615.0 | 1773 | 6130 | 12-M12 x 205 | 12-M12 x 205 | 725 | 413 | 83.9 |
| 527.0 | 544.0 | 601.0 | 618.0 | 1773 | 6020 | 12-M12 x 205 | 12-M12 x 205 | 728 | 417 | 85.2 |
| 527.0 | 544.0 | 630.0 | 647.0 | 1773 | 1778 | 12-M12 x 205 | 14-M12 x 205 | 757 | 422 | 101.0 |
| 527.0 | 544.0 | 645.2 | 662.2 | 1773 | 1779 | 12-M12 x 205 | 14-M12 x 205 | 772 | 423 | 108.0 |
| 527.0 | 544.0 | 675.0 | 692.0 | 1773 | 6005 | 12-M12 x 205 | 14-M12 x 205 | 802 | 412 | 122.0 |
| 565.0 | 582.0 | 582.2 | 599.2 | 1776 | 1777 | 12-M12 x 205 | 12-M12 x 205 | 709 | 401 | 67.0 |
| 565.0 | 582.0 | 601.0 | 618.0 | 1776 | 6020 | 12-M12 x 205 | 12-M12 x 205 | 728 | 415 | 76.5 |
| 566.5 | 583.5 | 601.0 | 618.0 | 1776 | 6020 | 12-M12 x 205 | 12-M12 x 205 | 728 | 415 | 76.5 |
| 582.2 | 599.2 | 601.0 | 618.0 | 1777 | 6020 | 12-M12 x 205 | 12-M12 x 205 | 728 | 410 | 69.1 |
| 582.2 | 599.2 | 630.0 | 647.0 | 1777 | 1778 | 12-M12 x 205 | 14-M12 x 205 | 757 | 421 | 83.2 |
| 598.0 | 615.0 | 630.0 | 647.0 | 6130 | 1778 | 14-M12 x 205 | 14-M12 x 205 | 757 | 411 | 80.0 |
| 601.0 | 618.0 | 630.0 | 647.0 | 6020 | 1778 | 14-M12 x 205 | 14-M12 x 205 | 757 | 411 | 79.5 |
| 601.0 | 618.0 | 675.0 | 692.0 | 6020 | 6005 | 14-M12 x 205 | 14-M12 x 205 | 802 | 419 | 99.0 |
| 630.0 | 647.0 | 689.0 | 706.0 | 1778 | 10511/49 | 14-M12 x 205 | 14-M12 x 205 | 816 | 418 | 94.9 |
| 630.0 | 647.0 | 710.0 | 727.0 | 1778 | 6075 | 14-M12 x 205 | 14-M12 x 205 | 837 | 420 | 106.0 |

Materials & Relevant Standards

Make Up Ring Sleeve

Mild Steel to BS EN 10025-2 Grade S275
Rolled Steel to BS EN 10025-2 Grade S275

End Ring

Rolled Steel to BS EN 10025-2 Grade S275

Gasket

EPDM Grade "E" to BS EN 681-1 Type WA WRAS Listed

Coating

Sleeve & End Ring = Rilsan Nylon 11 to WIS 4-52-01 Part 1
Bolts & Nuts = Sheraplex to WIS 4-52-03

Bolts, Nuts & Washer

Bolts

Standard - Steel to BS EN ISO 898-1 Property Class 4.8

Option - Stainless Steel to BS EN ISO 3506-1: grade A4 property class 50

Nuts

Standard - Steel to BS EN 4190 Grade 4

Option - Stainless Steel to BS EN ISO 3506-2: grade A4 property class 80

Washers

Stainless Steel to BS 1449:Part 2 Grade 304 S15

Bolt Torque / Spanner

Bolt torque - 55-65Nm / Spanner size - A/F 19mm

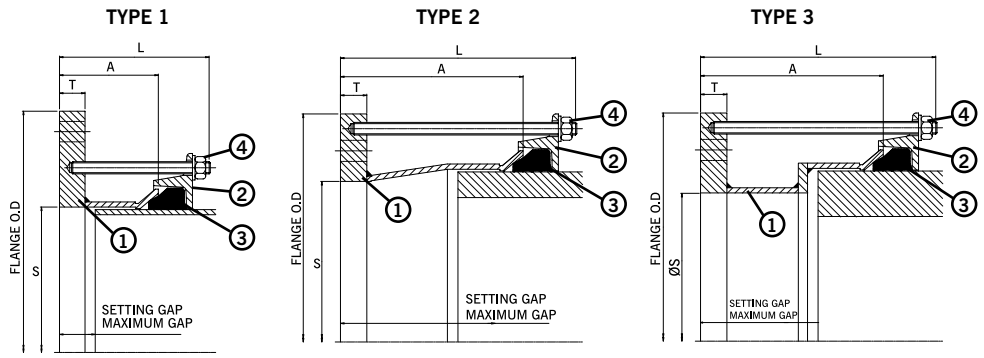
Every effort has been made to ensure that the information contained in this publication is accurate at the time of publishing. Crane Ltd assumes no responsibility or liability for typographical errors or omissions or for any misinterpretation of the information within the publication and reserves the right to change without notice.

MaxiDaptor Large Diameter Flange Adaptor PN10

Specifications

- 1 = Make Up Ring Sleeve
- 2 = End Ring
- 3 = Gasket
- 4 = Stud, Nut & Washer

Working Pressure = 16bar (water)
6bar (gas)



Flange Adaptor PN10

| OD Range | | Flange Details | | | | | | | Gasket Mould No. | Studs No.-Dia x Length | Setting Gap | | Weight (kg) | |
|----------|----------|----------------|----------|-------------------------|--------------------|-------------------------|------|----------------------|------------------|------------------------|-----------------------|----------|-------------|----------|
| Min (mm) | Max (mm) | Nom. | Drilling | Flange Diameter OD (mm) | Flange Bore S (mm) | Flange Thickness T (mm) | Type | Sleeve Length A (mm) | | | Overall Length L (mm) | Min (mm) | | Max (mm) |
| 351.0 | 368.0 | 300 | PN10 | 478.0 | 300.0 | 18 | 3 | 205 | 298 | 6002 | 6-M12 x 290 | 130 | 153 | 36.6 |
| 351.0 | 368.0 | 350 | PN10 | 505.0 | 350.0 | 18 | 1 | 120 | 218 | 6002 | 8-M12 x 205 | 45 | 68 | 27.4 |
| 351.0 | 368.0 | 350 | PN10 | 505.0 | 370.0 | 18 | 1 | 120 | 218 | 6002 | 8-M12 x 205 | 45 | 68 | 28.9 |
| 367.0 | 384.0 | 300 | PN10 | 494.0 | 300.0 | 18 | 3 | 235 | 313 | 6097 | 6-M12 x 305 | 160 | 183 | 41.4 |
| 367.0 | 384.0 | 350 | PN10 | 505.0 | 350.0 | 18 | 1 | 120 | 213 | 6097 | 8-M12 x 205 | 45 | 68 | 29.5 |
| 374.5 | 391.5 | 300 | PN10 | 501.0 | 300.0 | 18 | 3 | 205 | 298 | 1659 | 6-M12 x 290 | 130 | 153 | 41.2 |
| 374.5 | 391.5 | 350 | PN10 | 505.0 | 350.0 | 18 | 1 | 120 | 213 | 1659 | 8-M12 x 205 | 45 | 68 | 29.8 |
| 374.5 | 391.5 | 350 | PN10 | 505.0 | 393.5 | 18 | 1 | 120 | 218 | 1659 | 8-M12 x 205 | 45 | 68 | 26.2 |
| 374.5 | 391.5 | 400 | PN10 | 565.0 | 393.5 | 25 | 1 | 120 | 218 | 1659 | 8-M12 x 205 | 45 | 68 | 39.4 |
| 394.3 | 411.3 | 350 | PN10 | 522.0 | 350.0 | 18 | 2 | 205 | 303 | 1766 | 8-M12 x 290 | 130 | 153 | 37.4 |
| 394.3 | 411.3 | 350 | PN10 | 505.0 | 397.5 | 18 | 2 | 205 | 303 | 1766 | 8-M12 x 290 | 130 | 153 | 33.5 |
| 394.3 | 411.3 | 400 | PN10 | 565.0 | 400.0 | 25 | 1 | 120 | 220 | 1766 | 8-M12 x 205 | 45 | 68 | 39.3 |
| 394.3 | 411.3 | 400 | PN10 | 565.0 | 413.5 | 25 | 1 | 120 | 220 | 1766 | 8-M12 x 205 | 45 | 68 | 37.6 |
| 404.8 | 421.8 | 350 | PN10 | 532.0 | 350.0 | 18 | 3 | 235 | 313 | 1767 | 8-M12 x 305 | 160 | 183 | 44.3 |
| 404.8 | 421.8 | 400 | PN10 | 565.0 | 400.0 | 18 | 1 | 120 | 213 | 1767 | 8-M12 x 205 | 45 | 68 | 33.4 |
| 404.8 | 421.8 | 400 | PN10 | 565.0 | 424.0 | 18 | 1 | 120 | 218 | 1767 | 8-M12 x 205 | 45 | 68 | 31.2 |
| 418.2 | 435.2 | 400 | PN10 | 565.0 | 400.0 | 18 | 1 | 120 | 213 | 1784 | 8-M12 x 205 | 45 | 68 | 33.8 |
| 418.2 | 435.2 | 400 | PN10 | 565.0 | 437.0 | 18 | 1 | 120 | 218 | 1784 | 8-M12 x 205 | 45 | 68 | 30.4 |
| 425.0 | 442.0 | 350 | PN10 | 552.0 | 350.0 | 18 | 3 | 235 | 313 | 1662 | 8-M12 x 305 | 160 | 183 | 48.5 |
| 425.0 | 442.0 | 400 | PN10 | 565.0 | 400.0 | 18 | 1 | 120 | 218 | 1662 | 8-M12 x 205 | 45 | 68 | 34.1 |
| 425.0 | 442.0 | 400 | PN10 | 565.0 | 444.0 | 18 | 1 | 120 | 218 | 1662 | 8-M12 x 205 | 45 | 68 | 30.0 |
| 434.4 | 451.4 | 400 | PN10 | 565.0 | 400.0 | 18 | 2 | 205 | 298 | 1768 | 8-M12 x 290 | 130 | 153 | 40.4 |
| 434.4 | 451.4 | 400 | PN10 | 565.0 | 448.0 | 18 | 2 | 205 | 298 | 1768 | 8-M12 x 290 | 130 | 153 | 35.9 |
| 447.2 | 464.2 | 400 | PN10 | 575.0 | 400.0 | 18 | 2 | 205 | 298 | 1769 | 8-M12 x 290 | 130 | 153 | 41.9 |
| 447.2 | 464.2 | 400 | PN10 | 575.0 | 448.0 | 18 | 2 | 205 | 298 | 1769 | 8-M12 x 290 | 130 | 153 | 37.4 |
| 455.0 | 472.0 | 400 | PN10 | 582.0 | 400.0 | 18 | 3 | 240 | 333 | 6003 | 8-M12 x 325 | 165 | 188 | 48.7 |
| 455.0 | 472.0 | 450 | PN10 | 615.0 | 450.0 | 23 | 1 | 120 | 213 | 6003 | 10-M12 x 205 | 45 | 68 | 42.0 |
| 455.0 | 472.0 | 450 | PN10 | 615.0 | 474.0 | 23 | 1 | 120 | 218 | 6003 | 10-M12 x 205 | 45 | 68 | 38.9 |
| 467.0 | 484.0 | 400 | PN10 | 594.0 | 400.0 | 23 | 3 | 205 | 303 | 6073 | 8-M12 x 290 | 130 | 153 | 54.7 |
| 467.0 | 484.0 | 450 | PN10 | 615.0 | 450.0 | 23 | 1 | 120 | 218 | 6073 | 10-M12 x 205 | 45 | 68 | 42.4 |
| 476.0 | 493.0 | 400 | PN10 | 603.0 | 400.0 | 23 | 3 | 240 | 338 | 1770 | 8-M12 x 325 | 170 | 193 | 60.6 |
| 476.0 | 493.0 | 450 | PN10 | 615.0 | 450.0 | 23 | 1 | 120 | 218 | 1770 | 10-M12 x 205 | 45 | 68 | 42.7 |
| 476.0 | 493.0 | 450 | PN10 | 615.0 | 495.0 | 23 | 1 | 120 | 218 | 1770 | 10-M12 x 205 | 45 | 68 | 36.7 |
| 476.0 | 493.0 | 500 | PN10 | 670.0 | 495.0 | 25 | 1 | 120 | 218 | 1770 | 10-M12 x 205 | 45 | 68 | 49.0 |
| 487.3 | 504.3 | 400 | PN10 | 615.0 | 400.0 | 23 | 3 | 245 | 338 | 1771 | 8-M12 x 325 | 170 | 193 | 63.8 |
| 487.3 | 504.3 | 450 | PN10 | 615.0 | 450.0 | 23 | 2 | 205 | 303 | 1771 | 10-M12 x 290 | 130 | 153 | 49.8 |
| 487.3 | 504.3 | 450 | PN10 | 615.0 | 499.0 | 23 | 2 | 205 | 303 | 1771 | 10-M12 x 290 | 130 | 153 | 43.2 |

Materials & Relevant Standards

Flange Adaptor Body

Mild Steel to BS EN 10025-2 Grade S275

End Ring

Rolled Steel to BS EN 10025-2 Grade S275

Gasket

EPDM Grade "E" to BS EN 681-1 Type WA WRAS Listed

Bolt Torque / Spanner

Bolt torque - 55-65Nm / Spanner size - A/F 19mm

Coating

Flange Adaptor Body & End Ring = Rilsan Nylon 11 to WIS 4-52-01 Part 1

Bolts & Nuts = Sheraplex to WIS 4-52-03

Studs, Nuts & Washer

Studs

Standard - Steel to BS EN ISO 898-1 Property Class 4.8

Option - Stainless Steel to BS EN ISO 3506-1: grade A4 property class 50

Nuts

Standard - Steel to BS EN 4190 Grade 4

Option - Stainless Steel to BS EN ISO 3506-2: grade A4 property class 80

Washers

Stainless Steel to BS 1449:Part 2 Grade 304 S15

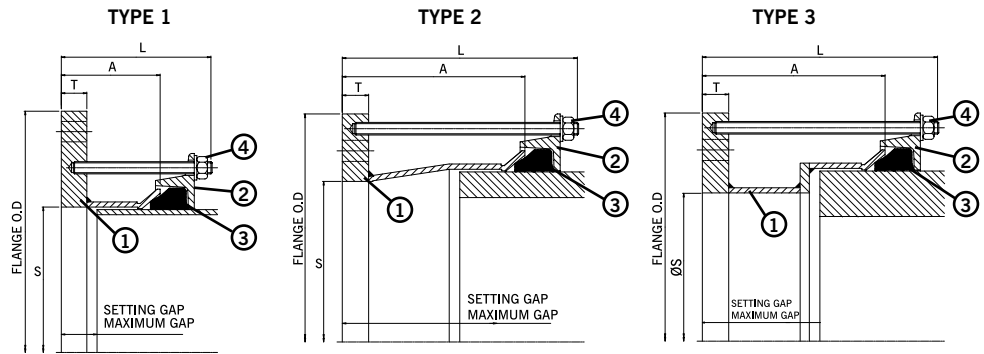
Every effort has been made to ensure that the information contained in this publication is accurate at the time of publishing. Crane Ltd assumes no responsibility or liability for typographical errors or omissions or for any misinterpretation of the information within the publication and reserves the right to change without notice.

MaxiDaptor Large Diameter Flange Adaptor PN10

Specifications

- 1 = Adaptor Body
- 2 = End Ring
- 3 = Gasket
- 4 = Stud, Nut & Washer

Working Pressure = 16bar (water)
6bar (gas)



Flange Adaptor PN10

| OD Range | | Flange Details | | | | | | | | | Gasket Mould No. | Studs No.-Dia x Length | Setting Gap | | Weight (kg) |
|----------|----------|----------------|----------|-------------------------|--------------------|-------------------------|------|----------------------|-----------------------|----------|------------------|------------------------|-------------|------|-------------|
| Min (mm) | Max (mm) | Nom. | Drilling | Flange Diameter OD (mm) | Flange Bore S (mm) | Flange Thickness T (mm) | Type | Sleeve Length A (mm) | Overall Length L (mm) | Min (mm) | | | Max (mm) | | |
| 487.3 | 504.3 | 500 | PN10 | 670.0 | 500.0 | 23 | 1 | 120 | 218 | 1771 | 10-M12 x 205 | 45 | 68 | 46.4 | |
| 492.0 | 509.0 | 500 | PN10 | 670.0 | 511.0 | 23 | 1 | 120 | 218 | 6037 | 10-M12 x 205 | 45 | 68 | 45.0 | |
| 501.9 | 518.9 | 450 | PN10 | 630.0 | 450.0 | 23 | 2 | 205 | 303 | 1772 | 10-M12 x 290 | 130 | 153 | 52.3 | |
| 501.9 | 518.9 | 450 | PN10 | 615.0 | 485.5 | 23 | 2 | 205 | 303 | 1772 | 10-M12 x 290 | 130 | 153 | 47.6 | |
| 501.9 | 518.9 | 500 | PN10 | 670.0 | 500.0 | 23 | 1 | 120 | 218 | 1772 | 10-M12 x 205 | 45 | 68 | 47.0 | |
| 501.9 | 518.9 | 500 | PN10 | 670.0 | 521.0 | 23 | 1 | 120 | 218 | 1772 | 10-M12 x 205 | 45 | 68 | 43.9 | |
| 510.0 | 527.0 | 450 | PN10 | 637.0 | 450.0 | 23 | 2 | 205 | 303 | 6004 | 10-M12 x 290 | 130 | 153 | 53.9 | |
| 510.0 | 527.0 | 450 | PN10 | 637.0 | 494.0 | 23 | 2 | 205 | 303 | 6004 | 10-M12 x 290 | 130 | 153 | 48.0 | |
| 510.0 | 527.0 | 500 | PN10 | 670.0 | 500.0 | 23 | 1 | 120 | 220 | 6004 | 10-M12 x 205 | 45 | 68 | 47.2 | |
| 527.0 | 544.0 | 500 | PN10 | 670.0 | 500.0 | 23 | 1 | 120 | 218 | 1773 | 10-M12 x 205 | 45 | 68 | 47.8 | |
| 527.0 | 544.0 | 500 | PN10 | 670.0 | 546.0 | 23 | 1 | 120 | 218 | 1773 | 10-M12 x 205 | 45 | 68 | 47.1 | |
| 540.1 | 557.1 | 450 | PN10 | 667.0 | 450.0 | 23 | 3 | 250 | 338 | 1774 | 10-M12 x 325 | 175 | 198 | 71.2 | |
| 540.1 | 557.1 | 500 | PN10 | 670.0 | 500.0 | 23 | 2 | 205 | 303 | 1774 | 10-M12 x 290 | 130 | 153 | 55.0 | |
| 540.1 | 557.1 | 500 | PN10 | 670.0 | 550.0 | 23 | 2 | 205 | 303 | 1774 | 10-M12 x 290 | 130 | 153 | 47.6 | |
| 555.3 | 572.3 | 500 | PN10 | 684.0 | 500.0 | 23 | 2 | 205 | 303 | 1775 | 10-M12 x 290 | 130 | 153 | 58.2 | |
| 555.3 | 572.3 | 500 | PN10 | 684.0 | 550.0 | 23 | 2 | 205 | 303 | 1775 | 10-M12 x 290 | 130 | 153 | 50.8 | |
| 566.5 | 583.5 | 500 | PN10 | 694.0 | 500.0 | 23 | 2 | 205 | 303 | 1776 | 10-M12 x 290 | 130 | 153 | 60.5 | |
| 566.5 | 583.5 | 500 | PN10 | 694.0 | 550.0 | 23 | 2 | 205 | 303 | 1776 | 10-M12 x 290 | 130 | 153 | 53.1 | |
| 582.2 | 599.2 | 500 | PN10 | 709.0 | 500.0 | 23 | 3 | 205 | 303 | 1777 | 10-M12 x 290 | 130 | 153 | 72.6 | |
| 582.2 | 599.2 | 500 | PN10 | 670.0 | 540.0 | 23 | 3 | 205 | 303 | 1777 | 10-M12 x 290 | 130 | 153 | 64.5 | |
| 582.2 | 599.2 | 600 | PN10 | 780.0 | 600.0 | 25 | 1 | 120 | 218 | 1777 | 10-M12 x 205 | 45 | 68 | 59.1 | |
| 601.0 | 618.0 | 500 | PN10 | 728.0 | 500.0 | 23 | 3 | 255 | 338 | 6020 | 10-M12 x 325 | 180 | 203 | 81.3 | |
| 601.0 | 618.0 | 600 | PN10 | 780.0 | 600.0 | 25 | 1 | 120 | 218 | 6020 | 10-M12 x 205 | 45 | 68 | 59.8 | |
| 618.0 | 635.0 | 600 | PN10 | 780.0 | 600.0 | 23 | 1 | 120 | 218 | 6025 | 10-M12 x 205 | 45 | 68 | 57.5 | |
| 630.0 | 647.0 | 600 | PN10 | 780.0 | 600.0 | 23 | 1 | 120 | 218 | 1778 | 10-M12 x 205 | 45 | 68 | 58.0 | |
| 630.0 | 647.0 | 600 | PN10 | 780.0 | 649.0 | 23 | 1 | 120 | 218 | 1778 | 10-M12 x 205 | 45 | 68 | 49.4 | |
| 645.2 | 662.2 | 600 | PN10 | 780.0 | 600.0 | 23 | 2 | 205 | 303 | 1779 | 10-M12 x 290 | 130 | 153 | 66.8 | |
| 645.2 | 662.2 | 600 | PN10 | 780.0 | 649.0 | 23 | 2 | 205 | 303 | 1779 | 10-M12 x 290 | 130 | 153 | 58.1 | |
| 662.0 | 679.0 | 600 | PN10 | 790.0 | 600.0 | 23 | 2 | 205 | 298 | 1780 | 10-M12 x 290 | 130 | 153 | 69.3 | |
| 662.0 | 679.0 | 600 | PN10 | 790.0 | 653.0 | 23 | 2 | 205 | 303 | 1780 | 10-M12 x 290 | 130 | 153 | 60.0 | |
| 675.0 | 692.0 | 600 | PN10 | 802.0 | 600.0 | 23 | 2 | 205 | 303 | 6005 | 10-M12 x 290 | 130 | 153 | 72.3 | |
| 675.0 | 692.0 | 600 | PN10 | 802.0 | 653.0 | 23 | 2 | 205 | 303 | 6005 | 10-M12 x 290 | 130 | 153 | 63.0 | |
| 689.0 | 706.0 | 600 | PN10 | 816.0 | 600.0 | 23 | 3 | 260 | 338 | 10511/49 | 10-M12 x 325 | 185 | 210 | 90.3 | |
| 695.0 | 712.0 | 700 | PN10 | 895.0 | 714.0 | 23 | 1 | 120 | 218 | 6063 | 12-M12 x 205 | 45 | 68 | 66.1 | |
| 699.0 | 716.0 | 700 | PN10 | 895.0 | 718.0 | 23 | 1 | 120 | 218 | 10511/50 | 12-M12 x 205 | 45 | 68 | 65.5 | |

Materials & Relevant Standards

Flange Adaptor Body

Mild Steel to BS EN 10025-2 Grade S275

End Ring

Rolled Steel to BS EN 10025-2 Grade S275

Gasket

EPDM Grade "E" to BS EN 681-1 Type WA WRAS Listed

Bolt Torque / Spanner

Bolt torque - 55-65Nm / Spanner size - A/F 19mm

Coating

Flange Adaptor Body & End Ring = Rilsan Nylon 11 to WIS 4-52-01 Part 1

Bolts & Nuts = Sheraplex to WIS 4-52-03

Studs, Nuts & Washer

Studs

Standard - Steel to BS EN ISO 898-1 Property Class 4.8

Option - Stainless Steel to BS EN ISO 3506-1: grade A4 property class 50

Nuts

Standard - Steel to BS EN 4190 Grade 4

Option - Stainless Steel to BS EN ISO 3506-2: grade A4 property class 80

Washers

Stainless Steel to BS 1449:Part 2 Grade 304 S15

Every effort has been made to ensure that the information contained in this publication is accurate at the time of publishing. Crane Ltd assumes no responsibility or liability for typographical errors or omissions or for any misinterpretation of the information within the publication and reserves the right to change without notice.

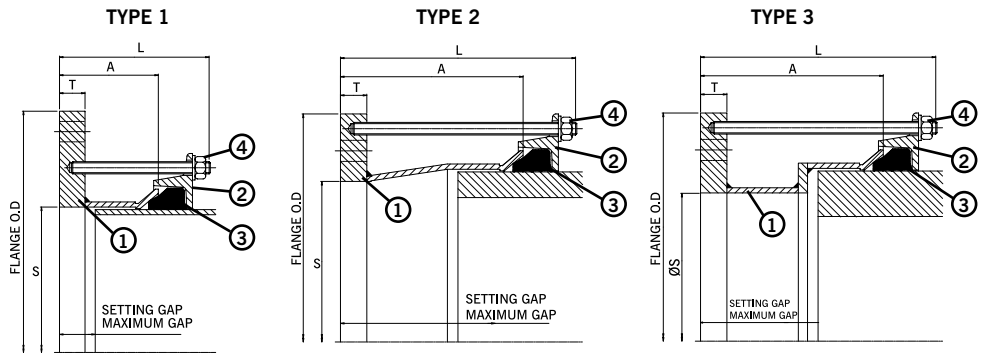
MaxiDaptor Large Diameter Flange Adaptor PN16

Specifications

- 1 = Adaptor Body
- 2 = End Ring
- 3 = Gasket
- 4 = Stud, Nut & Washer

Working Pressure = 16bar (water)
6bar (gas)

Flange Adaptor PN16



| OD Range | | Flange Details | | | | | | | | Gasket Mould No. | Studs No.-Dia x Length | Setting Gap | | Weight (kg) |
|----------|----------|----------------|----------|-------------------------|--------------------|-------------------------|------|----------------------|-----------------------|------------------|------------------------|-------------|----------|-------------|
| Min (mm) | Max (mm) | Nom. | Drilling | Flange Diameter OD (mm) | Flange Bore S (mm) | Flange Thickness T (mm) | Type | Sleeve Length A (mm) | Overall Length L (mm) | | | Min (mm) | Max (mm) | |
| 348.5 | 365.5 | 350 | PN16 | 520.0 | 367.5 | 18 | 2 | 120 | 218 | 6008 | 8-M12 x 205 | 45 | 68 | 28.5 |
| 351.0 | 368.0 | 300 | PN16 | 478.0 | 300.0 | 18 | 3 | 240 | 333 | 6002 | 6-M12 x 325 | 165 | 188 | 38.5 |
| 351.0 | 368.0 | 300 | PN16 | 478.0 | 329.0 | 18 | 3 | 240 | 333 | 6002 | 6-M12 x 325 | 165 | 188 | 36.5 |
| 351.0 | 368.0 | 350 | PN16 | 520.0 | 370.0 | 18 | 1 | 120 | 218 | 6002 | 8-M12 x 205 | 45 | 68 | 28.6 |
| 374.5 | 391.5 | 300 | PN16 | 502.0 | 300.0 | 18 | 3 | 240 | 333 | 1659 | 6-M12 x 325 | 160 | 183 | 43.1 |
| 374.5 | 391.5 | 350 | PN16 | 520.0 | 350.0 | 18 | 1 | 120 | 218 | 1659 | 8-M12 x 205 | 45 | 68 | 31.0 |
| 374.5 | 391.5 | 350 | PN16 | 520.0 | 393.5 | 18 | 1 | 120 | 218 | 1659 | 8-M12 x 205 | 45 | 68 | 27.5 |
| 374.5 | 391.5 | 400 | PN16 | 580.0 | 393.5 | 25 | 1 | 120 | 218 | 1659 | 8-M12 x 205 | 45 | 68 | 41.6 |
| 394.3 | 411.3 | 350 | PN16 | 522.0 | 350.0 | 18 | 2 | 205 | 298 | 1766 | 8-M12 x 290 | 130 | 153 | 37.1 |
| 394.3 | 411.3 | 350 | PN16 | 520.0 | 397.5 | 18 | 2 | 205 | 303 | 1766 | 8-M12 x 290 | 130 | 153 | 33.1 |
| 394.3 | 411.3 | 400 | PN16 | 580.0 | 413.5 | 25 | 1 | 120 | 220 | 1766 | 8-M12 x 205 | 45 | 68 | 39.8 |
| 404.8 | 421.8 | 400 | PN16 | 580.0 | 400.0 | 18 | 1 | 120 | 213 | 1767 | 8-M12 x 205 | 45 | 68 | 34.9 |
| 404.8 | 421.8 | 400 | PN16 | 580.0 | 424.0 | 18 | 1 | 120 | 218 | 1767 | 8-M12 x 205 | 45 | 68 | 32.8 |
| 418.2 | 435.2 | 400 | PN16 | 580.0 | 437.0 | 18 | 1 | 120 | 218 | 1784 | 8-M12 x 205 | 45 | 68 | 32.0 |
| 425.0 | 442.0 | 400 | PN16 | 580.0 | 400.0 | 18 | 1 | 120 | 218 | 1662 | 8-M12 x 205 | 45 | 68 | 35.7 |
| 425.0 | 442.0 | 400 | PN16 | 580.0 | 444.0 | 18 | 1 | 120 | 218 | 1662 | 8-M12 x 205 | 45 | 68 | 31.6 |
| 434.4 | 451.4 | 400 | PN16 | 580.0 | 448.0 | 18 | 2 | 205 | 303 | 1768 | 8-M12 x 290 | 130 | 153 | 37.4 |
| 447.2 | 464.2 | 400 | PN16 | 580.0 | 400.0 | 18 | 2 | 205 | 303 | 1769 | 8-M12 x 290 | 130 | 153 | 42.2 |
| 447.2 | 464.2 | 400 | PN16 | 580.0 | 448.0 | 18 | 2 | 205 | 303 | 1769 | 8-M12 x 290 | 130 | 153 | 37.7 |
| 455.0 | 472.0 | 400 | PN16 | 582.0 | 400.0 | 18 | 2 | 205 | 298 | 6003 | 8-M12 x 290 | 130 | 153 | 42.6 |
| 455.0 | 472.0 | 450 | PN16 | 640.0 | 450.0 | 23 | 1 | 120 | 218 | 6003 | 10-M12 x 205 | 45 | 68 | 46.0 |
| 455.0 | 472.0 | 450 | PN16 | 640.0 | 474.0 | 23 | 1 | 120 | 218 | 6003 | 10-M12 x 205 | 45 | 68 | 42.8 |
| 462.5 | 479.5 | 400 | PN16 | 590.0 | 440.0 | 25 | 2 | 205 | 303 | 10511/40 | 8-M12 x 290 | 130 | 153 | 45.7 |
| 467.0 | 484.0 | 450 | PN16 | 640.0 | 486.0 | 23 | 1 | 120 | 218 | 6073 | 10-M12 x 205 | 45 | 68 | 41.6 |
| 476.0 | 493.0 | 400 | PN16 | 603.0 | 400.0 | 23 | 3 | 255 | 338 | 1770 | 8-M12 x 325 | 180 | 203 | 60.8 |
| 476.0 | 493.0 | 450 | PN16 | 640.0 | 495.0 | 23 | 1 | 120 | 218 | 1770 | 10-M12 x 205 | 45 | 68 | 40.7 |
| 487.3 | 504.3 | 450 | PN16 | 640.0 | 506.5 | 23 | 1 | 120 | 218 | 1771 | 10-M12 x 205 | 45 | 68 | 39.4 |
| 487.3 | 504.3 | 500 | PN16 | 715.0 | 506.5 | 23 | 1 | 120 | 218 | 1771 | 10-M12 x 205 | 45 | 68 | 53.2 |
| 501.9 | 518.9 | 450 | PN16 | 640.0 | 485.5 | 23 | 2 | 205 | 303 | 1772 | 10-M12 x 290 | 130 | 153 | 48.7 |
| 501.9 | 518.9 | 500 | PN16 | 715.0 | 500.0 | 23 | 1 | 120 | 218 | 1772 | 10-M12 x 205 | 45 | 68 | 54.7 |
| 501.9 | 518.9 | 500 | PN16 | 715.0 | 521.0 | 23 | 1 | 120 | 218 | 1772 | 10-M12 x 205 | 45 | 68 | 51.7 |
| 510.0 | 527.0 | 450 | PN16 | 640.0 | 494.0 | 23 | 2 | 205 | 303 | 6004 | 10-M12 x 290 | 130 | 153 | 47.9 |
| 510.0 | 527.0 | 500 | PN16 | 715.0 | 500.0 | 23 | 1 | 120 | 218 | 6004 | 10-M12 x 205 | 45 | 68 | 54.9 |
| 527.0 | 544.0 | 500 | PN16 | 715.0 | 500.0 | 23 | 1 | 120 | 218 | 1773 | 10-M12 x 205 | 45 | 68 | 55.6 |
| 527.0 | 544.0 | 500 | PN16 | 715.0 | 546.0 | 23 | 1 | 120 | 218 | 1773 | 10-M12 x 205 | 45 | 68 | 48.8 |
| 540.1 | 557.1 | 500 | PN16 | 715.0 | 559.0 | 23 | 1 | 120 | 218 | 1774 | 10-M12 x 205 | 45 | 68 | 47.2 |
| 555.3 | 572.3 | 500 | PN16 | 715.0 | 550.0 | 23 | 2 | 205 | 303 | 1775 | 10-M12 x 290 | 130 | 153 | 56.0 |
| 555.3 | 572.3 | 600 | PN16 | 840.0 | 649.5 | 25 | 1 | 120 | 218 | 1775 | 10-M12 x 205 | 45 | 68 | 62.3 |

Materials & Relevant Standards

Flange Adaptor Body

Mild Steel to BS EN 10025-2 Grade S275

End Ring

Rolled Steel to BS EN 10025-2 Grade S275

Gasket

EPDM Grade "E" to BS EN 681-1 Type WA WRAS Listed

Bolt Torque / Spanner

Bolt torque - 55-65Nm / Spanner size - A/F 19mm

Coating

Flange Adaptor Body & End Ring = Rilsan Nylon 11 to WIS 4-52-01 Part 1

Bolts & Nuts = Sheraplex to WIS 4-52-03

Studs, Nuts & Washer

Studs

Standard - Steel to BS EN ISO 898-1 Property Class 4.8

Option - Stainless Steel to BS EN ISO 3506-1: grade A4 property class 50

Nuts

Standard - Steel to BS EN 4190 Grade 4

Option - Stainless Steel to BS EN ISO 3506-2: grade A4 property class 80

Washers

Stainless Steel to BS 1449:Part 2 Grade 304 S15

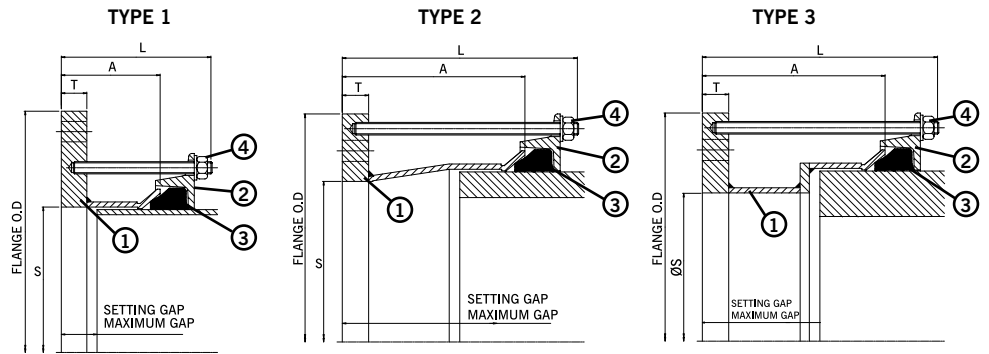
Every effort has been made to ensure that the information contained in this publication is accurate at the time of publishing. Crane Ltd assumes no responsibility or liability for typographical errors or omissions or for any misinterpretation of the information within the publication and reserves the right to change without notice.

MaxiDaptor Large Diameter Flange Adaptor PN16

Specifications

- 1 = Adaptor Body
- 2 = End Ring
- 3 = Gasket
- 4 = Stud, Nut & Washer

Working Pressure = 16bar (water)
6bar (gas)



Flange Adaptor PN16 Continued

| OD Range | | Flange Details | | | | | | | | Gasket Mould No. | Studs No.-Dia x Length | Setting Gap | | Weight (kg) |
|----------|----------|----------------|----------|-------------------------|--------------------|-------------------------|------|----------------------|-----------------------|------------------|------------------------|-------------|----------|-------------|
| Min (mm) | Max (mm) | Nom. | Drilling | Flange Diameter OD (mm) | Flange Bore S (mm) | Flange Thickness T (mm) | Type | Sleeve Length A (mm) | Overall Length L (mm) | | | Min (mm) | Max (mm) | |
| 566.5 | 583.5 | 500 | PN16 | 715.0 | 500.0 | 23 | 2 | 205 | 303 | 1776 | 10-M12 x 290 | 130 | 153 | 63.6 |
| 566.5 | 583.5 | 500 | PN16 | 715.0 | 550.0 | 23 | 2 | 205 | 303 | 1776 | 10-M12 x 290 | 130 | 153 | 56.2 |
| 582.2 | 599.2 | 500 | PN16 | 715.0 | 560.0 | 23 | 3 | 205 | 303 | 1777 | 10-M12 x 290 | 130 | 153 | 60.4 |
| 582.2 | 599.2 | 600 | PN16 | 840.0 | 601.0 | 25 | 1 | 120 | 218 | 1777 | 10-M12 x 205 | 45 | 68 | 72.5 |
| 601.0 | 618.0 | 600 | PN16 | 840.0 | 600.0 | 25 | 1 | 120 | 218 | 6020 | 10-M12 x 205 | 45 | 68 | 73.4 |
| 601.0 | 618.0 | 600 | PN16 | 840.0 | 620.0 | 25 | 1 | 120 | 218 | 6020 | 10-M12 x 205 | 45 | 68 | 69.7 |
| 613.0 | 630.0 | 600 | PN16 | 840.0 | 632.0 | 23 | 1 | 120 | 218 | 6019 | 10-M12 x 205 | 45 | 68 | 64.4 |
| 618.0 | 635.0 | 600 | PN16 | 840.0 | 637.0 | 23 | 1 | 120 | 218 | 6025 | 10-M12 x 205 | 45 | 68 | 63.6 |
| 630.5 | 647.5 | 600 | PN16 | 840.0 | 600.0 | 23 | 1 | 120 | 218 | 1778 | 10-M12 x 205 | 45 | 68 | 70.6 |
| 630.5 | 647.5 | 600 | PN16 | 840.0 | 649.5 | 23 | 1 | 120 | 218 | 1778 | 10-M12 x 205 | 45 | 68 | 61.8 |
| 645.2 | 662.2 | 600 | PN16 | 840.0 | 664.0 | 23 | 1 | 120 | 218 | 1779 | 10-M12 x 205 | 45 | 68 | 59.7 |
| 662.0 | 679.0 | 600 | PN16 | 840.0 | 681.0 | 23 | 1 | 120 | 218 | 1780 | 10-M12 x 205 | 45 | 68 | 57.1 |
| 675.0 | 692.0 | 600 | PN16 | 840.0 | 653.0 | 23 | 2 | 205 | 303 | 6005 | 10-M12 x 290 | 130 | 153 | 70.6 |

Materials & Relevant Standards

Flange Adaptor Body

Mild Steel to BS EN 10025-2 Grade S275

End Ring

Rolled Steel to BS EN 10025-2 Grade S275

Gasket

EPDM Grade "E" to BS EN 681-1 Type WA WRAS Listed

Bolt Torque / Spanner

Bolt torque - 55-65Nm / Spanner size - A/F 19mm

Coating

Flange Adaptor Body & End Ring = Rilsan Nylon 11 to WIS 4-52-01 Part 1

Bolts & Nuts = Sheraplex to WIS 4-52-03

Studs, Nuts & Washer

Studs

Standard - Steel to BS EN ISO 898-1 Property Class 4.8

Option - Stainless Steel to BS EN ISO 3506-1: grade A4 property class 50

Nuts

Standard - Steel to BS EN 4190 Grade 4

Option - Stainless Steel to BS EN ISO 3506-2: grade A4 property class 80

Washers

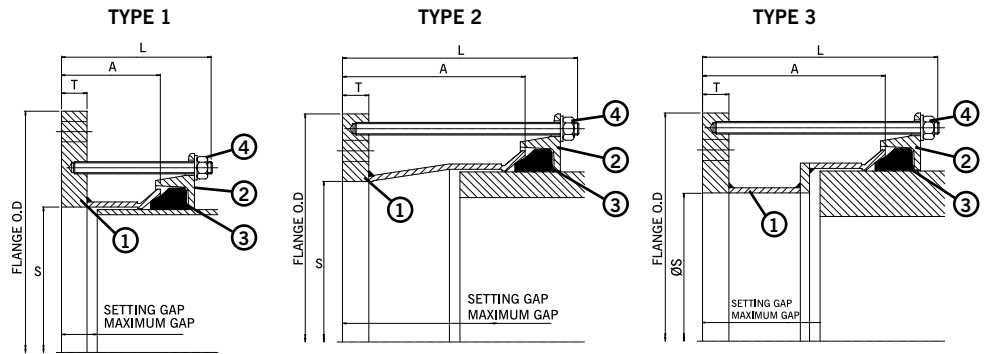
Stainless Steel to BS 1449:Part 2 Grade 304 S15

MaxiDaptor Large Diameter Flange Adaptor ANSI Flange Drilling

Specifications

- 1 = Adaptor Body
- 2 = End Ring
- 3 = Gasket
- 4 = Stud, Nut & Washer

Working Pressure = 16bar (water)
6bar (gas)



Flange Adaptor ANSI

| OD Range | | Flange Details | | | | | | | | | Gasket Mould No. | Studs No.-Dia x Length | Setting Gap | | Weight (kg) |
|----------|----------|----------------|----------|-------------------------|--------------------|-------------------------|------|----------------------|-----------------------|----------|------------------|------------------------|-------------|------|-------------|
| Min (mm) | Max (mm) | Nom. | Drilling | Flange Diameter OD (mm) | Flange Bore S (mm) | Flange Thickness T (mm) | Type | Sleeve Length A (mm) | Overall Length L (mm) | Min (mm) | | | Max (mm) | | |
| 351.0 | 368.0 | 14" | ANSI150 | 533.0 | 370.0 | 25 | 1 | 120 | 218 | 6002 | 6-M12 x 205 | 45 | 68 | 35.9 | |
| 374.5 | 391.5 | 14" | ANSI150 | 533.0 | 393.5 | 25 | 1 | 120 | 218 | 1659 | 6-M12 x 205 | 45 | 68 | 34.0 | |
| 386.0 | 403.0 | 14" | ANSI150 | 533.0 | 397.5 | 25 | 2 | 205 | 218 | 6035 | 6-M12 x 290 | 130 | 153 | 39.0 | |
| 394.3 | 411.3 | 14" | ANSI150 | 533.0 | 397.5 | 25 | 2 | 205 | 218 | 1766 | 6-M12 x 290 | 130 | 153 | 39.2 | |
| 404.8 | 421.8 | 16" | ANSI150 | 597.0 | 424.0 | 25 | 1 | 120 | 218 | 1767 | 8-M12 x 205 | 45 | 68 | 42.2 | |
| 425.0 | 442.0 | 16" | ANSI150 | 597.0 | 444.0 | 25 | 1 | 120 | 218 | 1662 | 8-M12 x 205 | 45 | 68 | 40.3 | |
| 434.4 | 451.4 | 16" | ANSI150 | 597.0 | 453.5 | 25 | 1 | 120 | 303 | 1768 | 8-M12 x 205 | 45 | 68 | 39.4 | |
| 439.0 | 456.0 | 16" | ANSI150 | 597.0 | 458.0 | 25 | 1 | 120 | 303 | 6036 | 8-M12 x 205 | 45 | 68 | 39.0 | |
| 447.2 | 464.2 | 16" | ANSI150 | 597.0 | 448.0 | 25 | 2 | 205 | 303 | 1769 | 8-M12 x 290 | 130 | 153 | 46.3 | |
| 455.0 | 472.0 | 16" | ANSI150 | 597.0 | 448.0 | 25 | 2 | 205 | 303 | 6003 | 8-M12 x 290 | 130 | 153 | 46.4 | |
| 455.0 | 472.0 | 18" | ANSI150 | 635.0 | 474.0 | 25 | 1 | 120 | 303 | 6003 | 8-M12 x 205 | 45 | 68 | 44.0 | |
| 487.3 | 504.3 | 18" | ANSI150 | 635.0 | 499.0 | 25 | 2 | 205 | 303 | 1771 | 8-M12 x 290 | 130 | 153 | 47.8 | |
| 492.0 | 509.0 | 18" | ANSI150 | 635.0 | 499.0 | 25 | 2 | 205 | 303 | 6037 | 8-M12 x 290 | 130 | 153 | 47.8 | |
| 501.9 | 518.9 | 18" | ANSI150 | 635.0 | 499.0 | 25 | 2 | 205 | 303 | 1772 | 8-M12 x 290 | 130 | 153 | 48.0 | |
| 510.0 | 527.0 | 18" | ANSI150 | 637.0 | 499.0 | 25 | 2 | 205 | 303 | 6004 | 8-M12 x 290 | 130 | 153 | 48.6 | |
| 527.0 | 544.0 | 20" | ANSI150 | 698.0 | 546.0 | 25 | 1 | 120 | 303 | 1773 | 10-M12 x 205 | 45 | 68 | 47.9 | |
| 540.1 | 557.1 | 20" | ANSI150 | 698.0 | 550.0 | 25 | 2 | 205 | 303 | 1774 | 10-M12 x 290 | 130 | 153 | 54.4 | |
| 546.0 | 563.0 | 20" | ANSI150 | 698.0 | 550.0 | 25 | 2 | 205 | 303 | 6038 | 10-M12 x 290 | 130 | 153 | 54.8 | |
| 555.3 | 572.3 | 20" | ANSI150 | 698.0 | 550.0 | 25 | 2 | 205 | 303 | 1775 | 10-M12 x 290 | 130 | 153 | 55.0 | |
| 565.0 | 582.0 | 20" | ANSI150 | 698.0 | 550.0 | 25 | 2 | 205 | 303 | 1776 | 10-M12 x 290 | 130 | 153 | 55.1 | |
| 582.2 | 599.2 | 20" | ANSI150 | 709.0 | 550.0 | 25 | 2 | 205 | 303 | 1777 | 10-M12 x 290 | 130 | 153 | 57.8 | |
| 601.0 | 618.0 | 24" | ANSI150 | 813.0 | 620.0 | 25 | 1 | 120 | 218 | 6020 | 10-M12 x 205 | 45 | 68 | 63.3 | |
| 630.0 | 647.0 | 24" | ANSI150 | 813.0 | 649.0 | 25 | 1 | 120 | 303 | 1778 | 10-M12 x 205 | 45 | 68 | 58.7 | |
| 645.2 | 662.2 | 24" | ANSI150 | 813.0 | 653.0 | 25 | 2 | 205 | 303 | 1779 | 10-M12 x 290 | 130 | 153 | 66.7 | |
| 654.0 | 671.0 | 24" | ANSI150 | 813.0 | 653.0 | 25 | 2 | 205 | 303 | 6039 | 10-M12 x 290 | 130 | 153 | 66.9 | |
| 662.0 | 679.0 | 24" | ANSI150 | 813.0 | 653.0 | 25 | 2 | 205 | 303 | 1780 | 10-M12 x 290 | 130 | 153 | 67.0 | |
| 675.0 | 692.0 | 24" | ANSI150 | 813.0 | 653.0 | 25 | 2 | 205 | 303 | 6005 | 10-M12 x 290 | 130 | 153 | 67.3 | |

Materials & Relevant Standards

Flange Adaptor Body

Mild Steel to BS EN 10025-2 Grade S275

End Ring

Rolled Steel to BS EN 10025-2 Grade S275

Gasket

EPDM Grade "E" to BS EN 681-1 Type WA WRAS Listed

Bolt Torque / Spanner

Bolt torque - 55-65Nm / Spanner size - A/F 19mm

Coating

Flange Adaptor Body & End Ring = Rilsan Nylon 11 to WIS 4-52-01 Part 1

Bolts & Nuts = Sheraplex to WIS 4-52-03

Studs, Nuts & Washer

Studs

Standard - Steel to BS EN ISO 898-1 Property Class 4.8

Option - Stainless Steel to BS EN ISO 3506-1: grade A4 property class 50

Nuts

Standard - Steel to BS EN 4190 Grade 4

Option - Stainless Steel to BS EN ISO 3506-2: grade A4 property class 80

Washers

Stainless Steel to BS 1449:Part 2 Grade 304 S15

Every effort has been made to ensure that the information contained in this publication is accurate at the time of publishing. Crane Ltd assumes no responsibility or liability for typographical errors or omissions or for any misinterpretation of the information within the publication and reserves the right to change without notice.

United Kingdom - Canterbury

South East Water

MaxiFit Couplings - DN500



Project

MaxiFit Couplings were used for the emergency repair of a mains pipe in Canterbury. It meant thousands of customers in the city had either no water or low water pressure.

Client

South East Water





46-48 WILBURY WAY
HITCHIN, HERTFORDSHIRE
SG4 0UD. UNITED KINGDOM
TELEPHONE: +44 (0)1462 443322
FAX: +44 (0)1462 443311
EMAIL: info@vikingjohnson.com

www.vikingjohnson.com

Every effort has been made to ensure that the information contained in this publication is accurate at the time of publishing. Crane Ltd assumes no responsibility or liability for typographical errors or omissions or for any misinterpretation of the information within the publication and reserves the right to change without notice.



ISO 14001 • EMS 51874



ISO 9001 • FM 00311



To visit our Video Library go to:
www.youtube.com/user/CraneBSU

- Designed and manufactured under quality management systems in accordance with BS EN ISO 9001.
- Environmental Management System accredited to ISO 14001.
- For full terms and conditions, please visit our website.

DF9380_09_2017

PIONEERS IN PIPE SOLUTIONS



www.cranesbu.com

