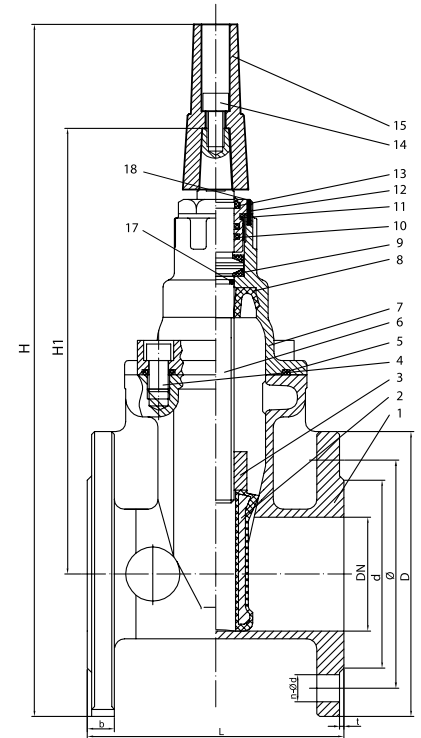
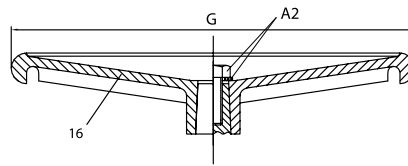


Resilient Seated Gate Valve - Series 31, 32, 33 & 34 BS5163

Specifications



| No. | Item | Material |
|-----|---------------|--------------------------------------|
| 1 | Body | Ductile Iron |
| 2 | Wedge | EPDM Encapsulated Ductile Iron Wedge |
| 3 | Stem Nut | DZR Brass |
| 4 | Capscrews | Stainless Steel |
| 5 | Bonnet Gasket | EPDM |
| 6 | Stem | Stainless Steel |
| 7 | Bonnet | Ductile Iron |
| 8 | Seal | EPDM |
| 9 | Washer | Nylon |

| No. | Item | Material |
|-----|------------|-----------------|
| 10 | O-Rings | EPDM |
| 11 | O-Ring | EPDM |
| 12 | Gland Bush | DZR Brass |
| 13 | Wiper Ring | EPDM |
| 14 | Capscrew | Stainless Steel |
| 15 | Stem Cap | Ductile Iron |
| 16 | Handwheel | Ductile Iron |
| 17 | O-Ring | EPDM |
| 18 | Pin | Stainless Steel |

Resilient Seated Gate Valve

| DN | L | N - ØD | D | Ø | D | B | T | H max | H1 | G | Wrench (kg) |
|-----|-----|----------|-----|-----|-----|------|-----|-------|-----|------|-------------|
| 50 | 178 | 4 - ø19 | 165 | 125 | 99 | 19 | 178 | 460 | 269 | ø200 | 12 |
| 65 | 190 | 4 - ø19 | 185 | 145 | 118 | 19 | 190 | 485 | 300 | ø200 | 16 |
| 80 | 203 | 8 - ø19 | 200 | 160 | 132 | 19 | 203 | 530 | 336 | ø260 | 20 |
| 100 | 229 | 8 - ø19 | 220 | 180 | 156 | 19 | 229 | 590 | 359 | ø260 | 24 |
| 125 | 254 | 8 - ø19 | 250 | 210 | 184 | 19 | 254 | 640 | 424 | ø315 | 32 |
| 150 | 267 | 8 - ø23 | 285 | 240 | 211 | 19 | 267 | 695 | 441 | ø375 | 41 |
| 200 | 292 | 12 - ø23 | 340 | 295 | 266 | 20 | 292 | 830 | 546 | ø375 | 63 |
| 250 | 330 | 12 - ø23 | 400 | 355 | 319 | 22 | 330 | 940 | 637 | ø400 | 114 |
| 300 | 356 | 12 - ø23 | 455 | 410 | 370 | 24.5 | 356 | 1030 | 719 | ø500 | 168 |

| PN | Non-shock pressure within temperature range | Non-shock pressure at maximum pressure |
|----|---|--|
| 16 | 16 bar from 0°C to 80°C | 16 bar at 80°C |

Materials & Relevant Standards

1. Body

Ductile Iron to EN1563 EN-GJS-500-7

2. Wedge

EPDM Encapsulated Ductile Iron Wedge

3. Stem Nut

DZR Brass to BS EN 12164 CW602N

4/14. Capscrew

Stainless Steel A2

5. Bonnet Gasket

EPDM to BS EN 681

6. Stem

Stainless Steel 304

7. Bonnet

Ductile Iron to EN1563 EN-GJS-500-7

8. Seal

EPDM to BS EN 681

9. Washer

Nylon 1010

10/11/17. O-Rings

EPDM to BS EN 681

12. Gland Bush

DZR Brass to BS EN 12164 CW602N

13. Wiper Ring

EPDM to BS EN 681

15. Stem Cap

Ductile Iron to EN1563 EN-GJS-500-7

16. Handwheel

Ductile Iron to EN1563 EN-GJS-500-7

18. Pin

Stainless Steel 304

Approval/Standards

BS EN 1074 1 & 2

Seat – 1.1 x PN

Body – 1.5 x PN

WRAS Approved Product

Size Range DN 50mm - DN 300mm

To EN 1074 parts 1 and 2

Face to Face in accordance with BS5163 and EN 558 series 3

Suitable for buried service

Also suitable for Air conditioning plants, Compressed Air, Irrigation, Fire Protection Systems