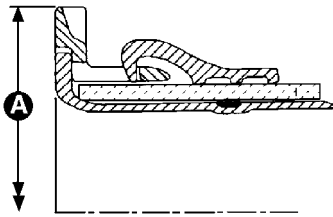


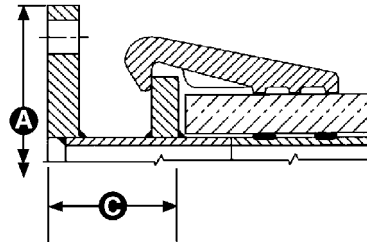
AquaGrip Flange Adaptor 225mm to 1600mm

Specifications

225mm - 280mm



315mm - 800mm



Note:

*SDR = Standard Dimensional Ratio

= Pipe OD

Wall Thickness

** The chart introduces the popular flange drillings. Other drillings may be possible - contact Viking Johnson for further details

| Pipe OD | SDR Rating * | | | | Flange Drilling ** | Pressure Rating | Dimensions | | No. of Bolts | Bolt Size | Weight (approx) (kg) | Gasket - 13022/ | | | |
|---------|--------------|---------|----|-------|--------------------|-----------------|------------|--------|--------------|-----------|----------------------|-----------------|---------|------|-------|
| | 11 | 17/17.6 | 21 | 26/33 | | | A (mm) | C (mm) | | | | 11 | 17/17.6 | 21 | 26/33 |
| 225 | ✓ | ✓ | ✓ | ✓ | 200 | PN16 | 340 | - | 4 | M16x130 | 15 | 1763 | 1685 | 1685 | 1685 |
| 250 | ✓ | ✓ | ✗ | ✓ | 200 | PN16 | 340 | - | 4 | M16x130 | 24 | 1655 | 1686 | 1686 | 1686 |
| 250 | ✓ | ✓ | ✓ | ✓ | 250 | PN16 | 405 | - | 4 | M16x130 | 23 | 1685 | 1686 | 1686 | 1686 |
| 280 | ✓ | ✓ | ✓ | ✓ | 250 | PN16 | 405 | - | 4 | M16x130 | 32 | 1686 | 1713 | 1713 | 1687 |
| 315 | ✓ | ✓ | ✓ | ✓ | 250 | PN16 | 405 | 170 | 4 | M20x120 | 48 | 4 | 24 | 6 | 6 |
| 355 | ✓ | ✓ | ✓ | ✓ | 300 | PN16 | 460 | 138 | 6 | M20x120 | 65 | 6 | 32 | 34 | 8 |
| 355 | ✓ | ✓ | ✓ | ✓ | 350 | PN16 | 520 | 138 | 6 | M20x120 | 65 | 6 | 32 | 34 | 8 |
| 400 | ✓ | ✓ | ✓ | ✓ | 400 | PN16 | 580 | 134 | 9 | M20x120 | 95 | 34 | 9 | 25 | 25 |
| 450 | ✓ | ✓ | ✓ | ✓ | 400 | PN16 | 580 | 134 | 9 | M27x150 | 160 | 25 | 11 | 12 | 12 |
| 450 | ✓ | ✓ | ✓ | ✓ | 450 | PN16 | 640 | 134 | 9 | M27x150 | 186 | 25 | 11 | 12 | 12 |
| 500 | ✓ | ✓ | ✓ | ✓ | 400 | PN16 | 580 | 175 | 9 | M27x150 | 169 | 11 | 26 | 27 | 13 |
| 500 | ✓ | ✓ | ✓ | ✓ | 450 | PN16 | 640 | 134 | 9 | M27x150 | 169 | 11 | 26 | 27 | 13 |
| 500 | ✓ | ✓ | ✓ | ✓ | 500 | PN16 | 715 | 134 | 9 | M27x150 | 199 | 11 | 26 | 27 | 13 |
| 560 | ✓ | ✓ | ✓ | ✓ | 450 | PN16 | 640 | 235 | 12 | M27x150 | 200 | 27 | 28 | 14 | 14 |
| 560 | ✓ | ✓ | ✓ | ✓ | 500 | PN16 | 715 | 180 | 12 | M27x150 | 248 | 27 | 28 | 14 | 14 |
| 630 | ✓ | ✓ | ✓ | ✓ | 600 | PN16 | 840 | 220 | 12 | M27x150 | 311 | 14 | 15 | 15 | 29 |
| 710 | ✗ | ✓ | ✓ | ✓ | 700 | PN16 | 910 | 310 | 12 | M27x150 | 311 | - | 16 | 35 | 35/36 |
| 800 | ✗ | ✓ | ✓ | ✓ | 700 | PN16 | 910 | 270 | 15 | M27x150 | 470 | - | 31 | 18 | 19 |
| 800 | ✗ | ✓ | ✓ | ✓ | 800 | PN16 | 1025 | 270 | 15 | M27x150 | 497 | - | 31 | 18 | 19 |
| 900 | ✗ | ✓ | ✓ | ✓ | 900 | PN16 | 1125 | - | 15 | M33x160 | 800 | - | 36 | 20 | 37 |
| 1000 | ✗ | ✓ | ✓ | ✓ | 1000 | PN16 | 1255 | - | 18 | M33x160 | 1107 | - | 20 | 20 | 20 |
| 1200 | ✗ | ✗ | ✗ | ✓ | 1200 | PN16 | 1485 | - | 18 | M33x180 | 1127 | - | - | - | 22 |
| 1400 | ✗ | ✗ | ✗ | ✓ | 1400 | PN16 | 1685 | - | 18 | M33x180 | 1582 | - | - | - | 23 |
| 1600 | ✗ | ✗ | ✗ | ✓ | 1600 | PN16 | 1930 | - | 24 | M33x180 | 1808 | - | - | - | - |

- ✓ Product installation requires heating mats at all temperatures.
- ✓ Product installation requires heating mats if temperature of bore to the pipe falls below -5°C.
- ✗ PE pipe wall too thick – do not have a product.

Materials & Relevant Standards

Flange adaptor body

280mm and below: SG iron to BS EN 1563 Symbol EN-GJS-450-10.
315mm and above: mild steel to BS EN10025 Grade S275.

Clamp band

SG iron (225mm to 800mm) to BS EN 1563 Symbol EN-GJS-450-10.
Mild steel to BS EN10025 Grade S275 (900mm to 1600mm).

Liner

(225 -280mm sizes): aluminium to BS1490 Grade LM 27M.

Gaskets

70 IRHD EPDM to BS EN 681-1 Type WA. WRAS listed.

Coatings

Flange adaptor body, clamp bands and liners are coated in Rilsan Nylon 11 (Black), WRAS listed.

Bolts and nuts and washers are zinc plated followed by Grey Flurene® 177.

Please note:

This product must be tightened to the required torque range:

- M16 bolts 70 - 80lbf.ft (95 - 110Nm.)
- M20 bolts 140 - 160lbf.ft (190 - 215Nm.)
- M27 bolts 260 - 300lbf.ft (350 - 405Nm.)
- M33 bolts 500 - 550lbf.ft (675 - 750Nm.)

Performance criteria

Designed and listed to meet the full Type 1 performance requirements of WIS 4-24-01 in all sizes up to 450mm.

For confirmation of other sizes please contact our Marketing Department.

Every effort has been made to ensure that the information contained in this publication is accurate at the time of publishing. Crane Ltd assumes no responsibility or liability for typographical errors or omissions or for any misinterpretation of the information within the publication and reserves the right to change without notice.