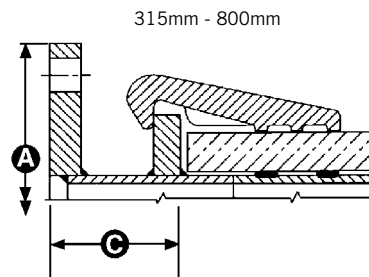
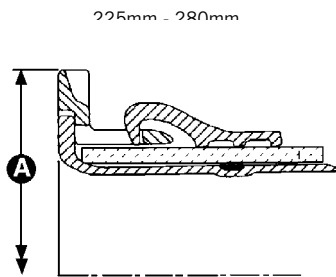


AquaGrip Flange Adaptor 225mm to 1600mm

Specifications



Note:

*SDR = Standard Dimensional Ratio

= Pipe OD

Wall Thickness

** The chart introduces the popular flange drillings. Other drillings may be possible - contact Viking Johnson for further details

Pipe OD	SDR Rating *				Flange Drilling **	Pressure Rating	Dimensions		No. of Bolts	Bolt Size	Weight (approx) (kg)	Gasket - 13022/			
	11	17/17.6	21	26/33			A (mm)	C (mm)				11	17/17.6	21	26/33
225	✓	✓	✓	✓	200	PN16	340	-	4	M16x130	15	1763	1685	1685	1685
250	✓	✓	✗	✓	200	PN16	340	-	4	M16x130	24	1655	1686	1686	1686
250	✓	✓	✓	✓	250	PN16	405	-	4	M16x130	23	1685	1686	1686	1686
280	✓	✓	✓	✓	250	PN16	405	-	4	M16x130	32	1686	1713	1713	1687
315	✓	✓	✓	✓	250	PN16	405	170	4	M20x120	48	4	24	6	6
355	✓	✓	✓	✓	300	PN16	460	138	6	M20x120	65	6	32	34	8
355	✓	✓	✓	✓	350	PN16	520	138	6	M20x120	65	6	32	34	8
400	✓	✓	✓	✓	400	PN16	580	134	9	M20x120	95	34	9	25	25
450	✓	✓	✓	✓	400	PN16	580	134	9	M27x150	160	25	11	12	12
450	✓	✓	✓	✓	450	PN16	640	134	9	M27x150	186	25	11	12	12
500	✓	✓	✓	✓	400	PN16	580	175	9	M27x150	169	11	26	27	13
500	✓	✓	✓	✓	450	PN16	640	134	9	M27x150	169	11	26	27	13
500	✓	✓	✓	✓	500	PN16	715	134	9	M27x150	199	11	26	27	13
560	✓	✓	✓	✓	450	PN16	640	235	12	M27x150	200	27	28	14	14
560	✓	✓	✓	✓	500	PN16	715	180	12	M27x150	248	27	28	14	14
630	✓	✓	✓	✓	600	PN16	840	220	12	M27x150	311	14	15	15	29
710	✗	✓	✓	✓	700	PN16	910	310	12	M27x150	311	-	16	35	35/36
800	✗	✓	✓	✓	700	PN16	910	270	15	M27x150	470	-	31	18	19
800	✗	✓	✓	✓	800	PN16	1025	270	15	M27x150	497	-	31	18	19
900	✗	✓	✓	✓	900	PN16	1125	Contact Viking Johnson	15	M33x160	800	-	36	20	37
1000	✗	✓	✓	✓	1000	PN16	1255		18	M33x160	1107	-	20	20	20
1200	✗	✗	✗	✓	1200	PN16	1485		18	M33x180	1127	-	-	-	22
1400	✗	✗	✗	✓	1400	PN16	1685		18	M33x180	1582	-	-	-	23
1600	✗	✗	✗	✓	1600	PN16	1930	24	M33x180	1808	-	-	-	-	-

- ✓ Product installation requires heating mats at all temperatures.
- ✓ Product installation requires heating mats if temperature of bore to the pipe falls below -5°C.
- ✗ PE pipe wall too thick – do not have a product.

Materials & Relevant Standards

Flange adaptor body

280mm and below: SG iron to BS EN 1563 Symbol EN-GJS-450-10.
315mm and above: mild steel to BS EN10025 Grade S275.

Clamp band

SG iron (225mm to 800mm) to BS EN 1563 Symbol EN-GJS-450-10.
Mild steel to BS EN10025 Grade S275 (900mm to 1600mm).

Liner

(225 - 280mm sizes): aluminium to BS1490 Grade LM 27M.

Gaskets

70 IRHD EPDM to BS EN 681-1 Type WA. WRAS listed.

Coatings

Flange adaptor body, clamp bands and liners are coated in Rilsan Nylon 11 (Black), WRAS listed.

Bolts and nuts and washers are zinc plated followed by Grey Flurene® 177.

Please note:

This product must be tightened to the required torque range:

- M16 bolts 70 - 80lbf.ft (95 - 110Nm.)
- M20 bolts 140 - 160lbf.ft (190 - 215Nm.)
- M27 bolts 260 - 300lbf.ft (350 - 405Nm.)
- M33 bolts 500 - 550lbf.ft (675 - 750Nm.)

Performance criteria

Designed and listed to meet the full Type 1 performance requirements of WIS 4-24-01 in all sizes up to 450mm.

For confirmation of other sizes please contact our Marketing Department.

Every effort has been made to ensure that the information contained in this publication is accurate at the time of publishing. Crane Ltd assumes no responsibility or liability for typographical errors or omissions or for any misinterpretation of the information within the publication and reserves the right to change without notice.